

Product datasheet for **TA349603S**

PIM2 Rabbit Polyclonal Antibody

Product data:

Product Type:	Primary Antibodies
Applications:	IHC
Recommended Dilution:	IHC: 50-200 Positive control: Human thyroid cancer Predicted cell location: Cytoplasm
Reactivity:	Human, Mouse
Host:	Rabbit
Isotype:	IgG
Clonality:	Polyclonal
Immunogen:	Fusion protein of human PIM2
Formulation:	pH7.4 PBS, 0.05% NaN ₃ , 40% Glycerol
Purification:	Antigen affinity purification
Conjugation:	Unconjugated
Storage:	Store at -20°C as received.
Stability:	Stable for 12 months from date of receipt.
Gene Name:	Pim-2 proto-oncogene, serine/threonine kinase
Database Link:	NP_006866 Entrez Gene 18715 Mouse Entrez Gene 11040 Human Q9P1W9
Background:	This gene encodes a protooncogene that acts as a serine/threonine protein kinase. Studies determined the encoded protein functions to prevent apoptosis and to promote cell survival. Proto-oncogene with serine/threonine kinase activity involved in cell survival and cell proliferation. Exerts its oncogenic activity through: the regulation of MYC transcriptional activity, the regulation of cell cycle progression, the regulation of cap-dependent protein translation and through survival signaling by phosphorylation of a pro-apoptotic protein, BAD. Phosphorylation of MYC leads to an increase of MYC protein stability and thereby an increase transcriptional activity.
Synonyms:	Pim-2h

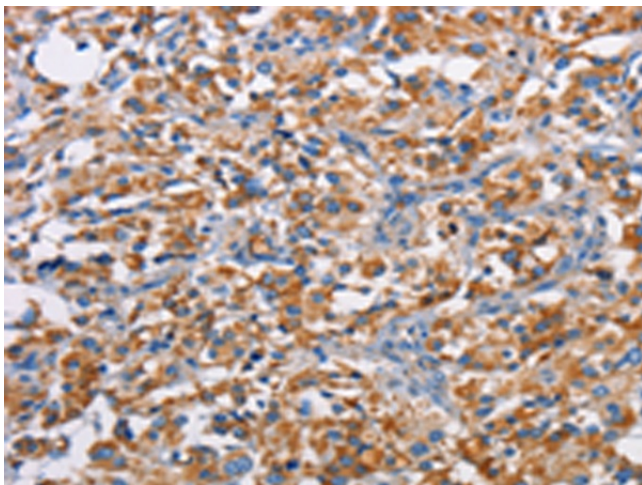


[View online »](#)

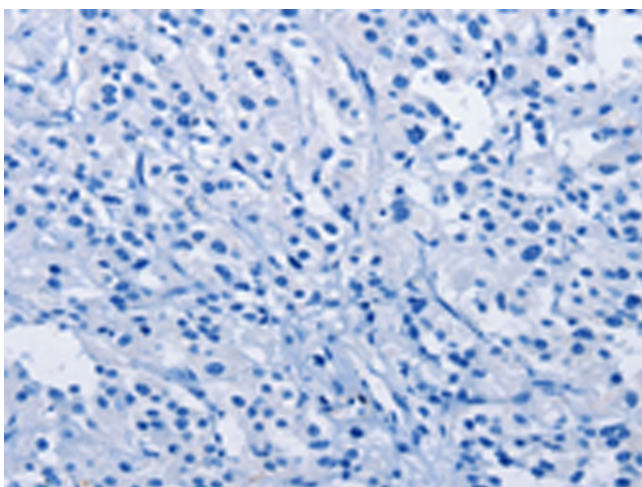
Protein Families: Druggable Genome, Protein Kinase

Protein Pathways: Acute myeloid leukemia

Product images:



Immunohistochemistry of paraffin-embedded Human thyroid cancer tissue using [TA349603] (PIM2 Antibody) at dilution 1/40 (Original magnification: $\times 200$)



Immunohistochemistry of paraffin-embedded Human thyroid cancer tissue using [TA349603] (PIM2 Antibody) at dilution 1/40, treated with fusion protein. (Original magnification: $\times 200$)