

## Product datasheet for **TA349600S**

### GMFG Rabbit Polyclonal Antibody

#### Product data:

Product Type:	Primary Antibodies
Applications:	IHC, WB
Recommended Dilution:	WB: 500-2000 WB positive control: Mouse heart and human fetal brain tissue IHC: 50-200 Positive control: Human cervical cancer Predicted cell location: Cytoplasm
Reactivity:	Human, Mouse, Rat
Host:	Rabbit
Isotype:	IgG
Clonality:	Polyclonal
Immunogen:	Fusion protein of human GMFG
Formulation:	pH7.4 PBS, 0.05% NaN <sub>3</sub> , 40% Glycerol
Purification:	Antigen affinity purification
Conjugation:	Unconjugated
Storage:	Store at -20°C as received.
Stability:	Stable for 12 months from date of receipt.
Predicted Protein Size:	17 kDa
Gene Name:	glia maturation factor gamma
Database Link:	<a href="#">NP_004868</a> <a href="#">Entrez Gene 63986 Mouse</a> <a href="#">Entrez Gene 113940 Rat</a> <a href="#">Entrez Gene 9535 Human</a> <a href="#">O60234</a>



[View online »](#)

**Background:**

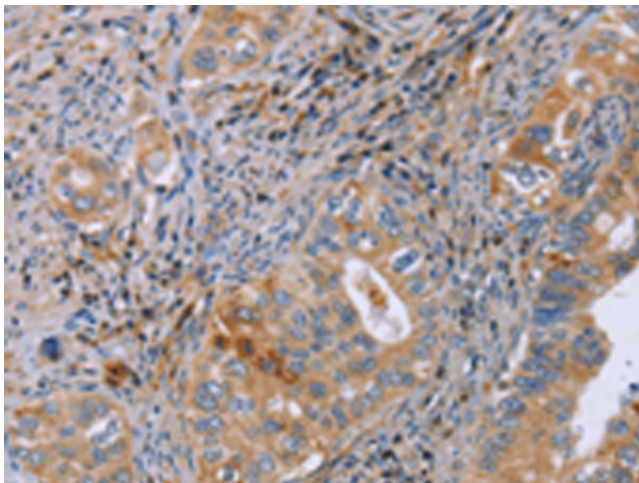
Glia maturation factor, gamma, also known as GMFG, is a 142 amino acid protein that belongs to the GMF subfamily of the larger actin-binding protein ADF family. GMF-gamma is expressed predominantly in lung, heart and placenta. GMF-gamma is considered a candidate regulatory growth factor protein, mediating both paracrine and autocrine cell-cell interactions. GMF-gamma is phosphorylated at N-terminal serine, and its phosphorylation is enhanced by coexpression of dominant active Rac 1 and Cdc42. GMF-gamma expression is significantly increased in a cardiac ischemia/reperfusion model where inflammation and angiogenesis take place actively. As a regulator of actin-based cellular functions, GMF-gamma may provide a novel approach to modulate the pathophysiology of cardiovascular diseases. GMF-gamma is primarily found in proliferative and differentiative organs.

**Synonyms:**

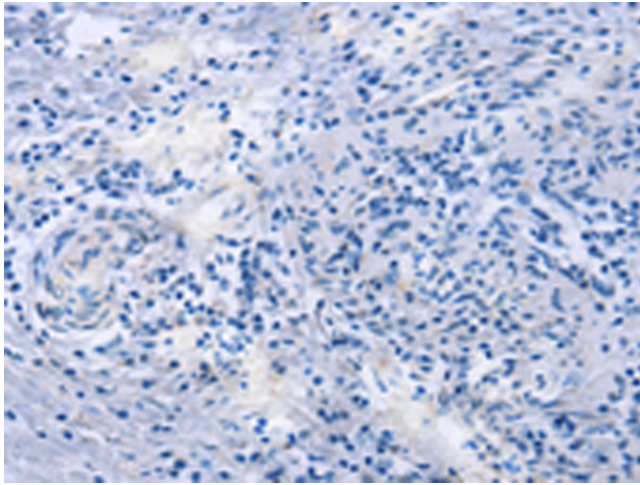
GMF-GAMMA

**Product images:**

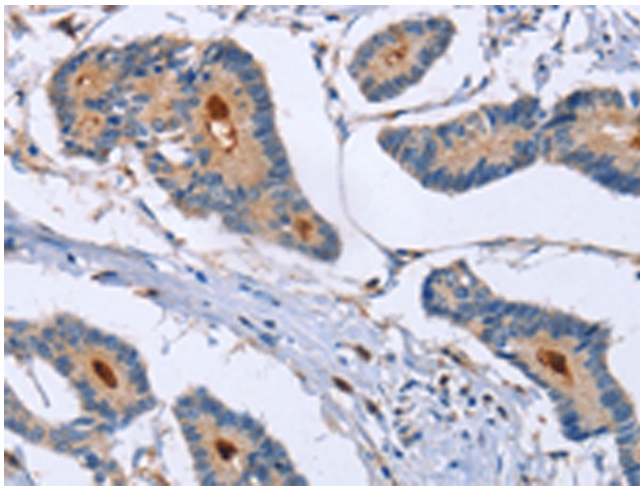
Gel: 10%SDS-PAGE  
Lysate: 40 µg  
Lane 1-2: Mouse heart tissue  
human fetal brain tissue  
Primary antibody: [TA349600] (GMFG Antibody)  
at dilution 1/1142  
Secondary antibody: Goat anti rabbit IgG at  
1/8000 dilution  
Exposure time: 10 seconds



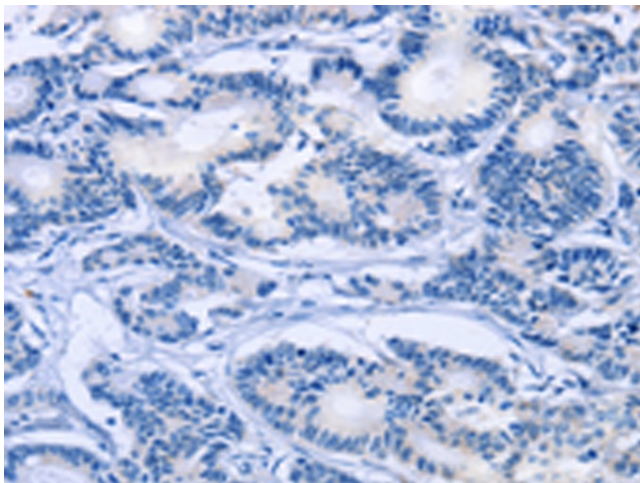
Immunohistochemistry of paraffin-embedded  
Human cervical cancer tissue using [TA349600]  
(GMFG Antibody) at dilution 1/50 (Original  
magnification: ×200)



Immunohistochemistry of paraffin-embedded Human cervical cancer tissue using [TA349600] (GMFG Antibody) at dilution 1/50, treated with fusion protein. (Original magnification:  $\times 200$ )



Immunohistochemistry of paraffin-embedded Human colon cancer tissue using [TA349600] (GMFG Antibody) at dilution 1/50 (Original magnification:  $\times 200$ )



Immunohistochemistry of paraffin-embedded Human colon cancer tissue using [TA349600] (GMFG Antibody) at dilution 1/50, treated with fusion protein. (Original magnification:  $\times 200$ )