

## Product datasheet for **TA349595**

### Lactoferrin (LTF) Rabbit Polyclonal Antibody

#### Product data:

Product Type:	Primary Antibodies
Applications:	IHC, WB
Recommended Dilution:	WB: 500-2000 WB positive control: Human placenta tissue lysate IHC: 100-300 Positive control: Human liver cancer Predicted cell location: Cytoplasm
Reactivity:	Human
Host:	Rabbit
Isotype:	IgG
Clonality:	Polyclonal
Immunogen:	Fusion protein of human LTF
Formulation:	pH7.4 PBS, 0.05% NaN <sub>3</sub> , 40% Glycerol
Concentration:	lot specific
Purification:	Antigen affinity purification
Conjugation:	Unconjugated
Storage:	Store at -20°C as received.
Stability:	Stable for 12 months from date of receipt.
Predicted Protein Size:	78 kDa
Gene Name:	lactotransferrin
Database Link:	<a href="#">NP_002334</a> <a href="#">Entrez Gene 4057 Human P02788</a>



[View online »](#)

**Background:**

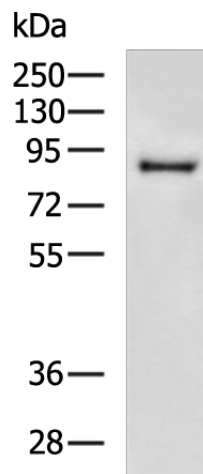
This gene is a member of the transferrin family of genes and its protein product is found in the secondary granules of neutrophils. The protein is a major iron-binding protein in milk and body secretions with an antimicrobial activity, making it an important component of the non-specific immune system. The protein demonstrates a broad spectrum of properties, including regulation of iron homeostasis, host defense against a broad range of microbial infections, anti-inflammatory activity, regulation of cellular growth and differentiation and protection against cancer development and metastasis. Alternatively spliced transcript variants encoding different isoforms have been found for this gene.

**Synonyms:**

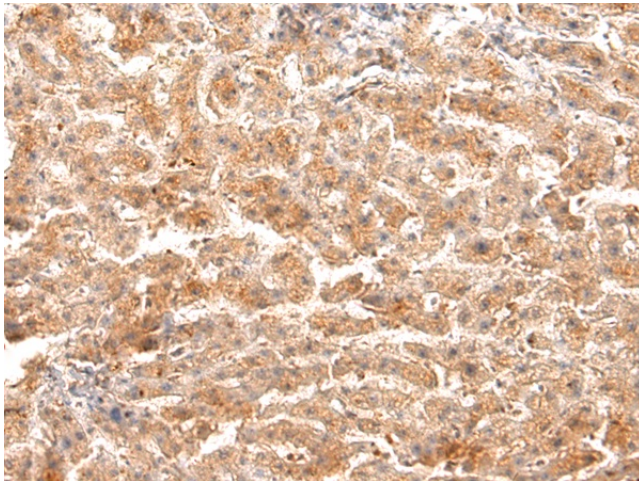
GIG12; HEL110; HLF2; LF

**Protein Families:**

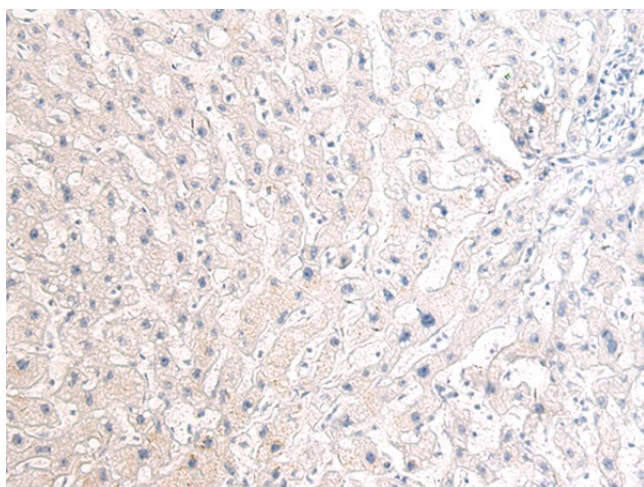
Druggable Genome, Protease, Secreted Protein

**Product images:**


Gel: 8%SDS-PAGE  
 Lysate: 40 µg  
 Lane: Human placenta tissue lysate  
 Primary antibody: TA349595 (LTF Antibody) at dilution 1/800  
 Secondary antibody: Goat anti rabbit IgG at 1/5000 dilution  
 Exposure time: 2 minutes



Immunohistochemistry of paraffin-embedded Human liver cancer tissue using TA349595 (LTF Antibody) at dilution 1/100 (Original magnification: ×200)



Immunohistochemistry of paraffin-embedded Human liver cancer tissue using TA349595 (LTF Antibody) at dilution 1/100, treated with fusion protein. (Original magnification:  $\times 200$ )