

## Product datasheet for **TA349592**

### Vitronectin (VTN) Rabbit Polyclonal Antibody

#### Product data:

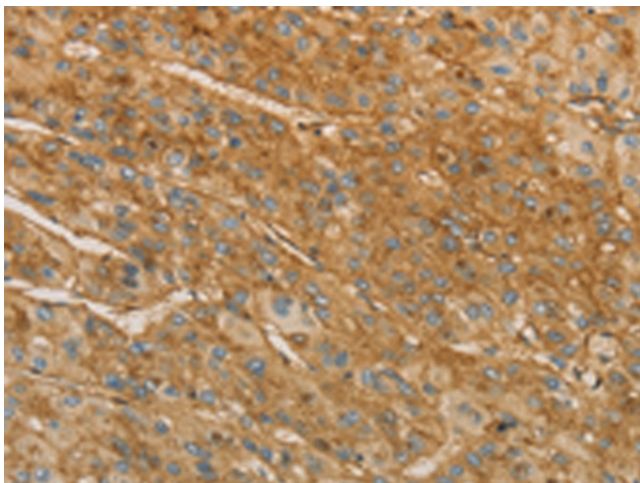
Product Type:	Primary Antibodies
Applications:	IHC
Recommended Dilution:	IHC: 50-200 Positive control: Human liver cancer Predicted cell location: Cytoplasm
Reactivity:	Human
Host:	Rabbit
Isotype:	IgG
Clonality:	Polyclonal
Immunogen:	Fusion protein of human VTN
Formulation:	pH7.4 PBS, 0.05% NaN <sub>3</sub> , 40% Glycerol
Concentration:	lot specific
Purification:	Antigen affinity purification
Conjugation:	Unconjugated
Storage:	Store at -20°C as received.
Stability:	Stable for 12 months from date of receipt.
Gene Name:	vitronectin
Database Link:	<a href="#">NP_000629</a> <a href="#">Entrez Gene 7448 Human</a> <a href="#">P04004</a>
Background:	The protein encoded by this gene is a member of the pexin family. It is found in serum and tissues and promotes cell adhesion and spreading, inhibits the membrane-damaging effect of the terminal cytolytic complement pathway, and binds to several serpin serine protease inhibitors. It is a secreted protein and exists in either a single chain form or a clipped, two chain form held together by a disulfide bond.
Synonyms:	V75; VN; VNT
Protein Families:	Druggable Genome, Secreted Protein



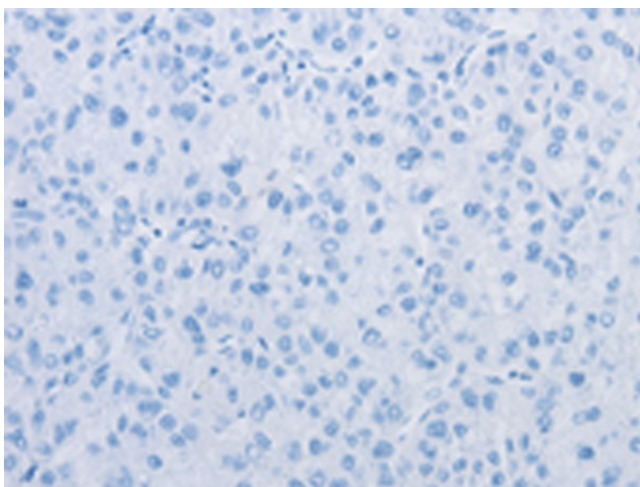
[View online »](#)

Protein Pathways: ECM-receptor interaction, Focal adhesion

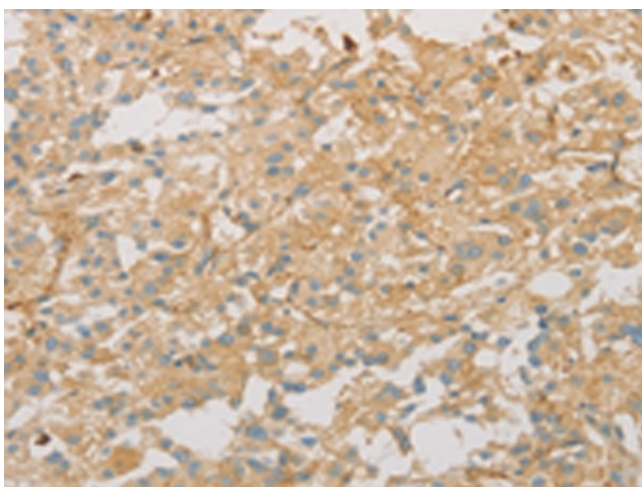
**Product images:**



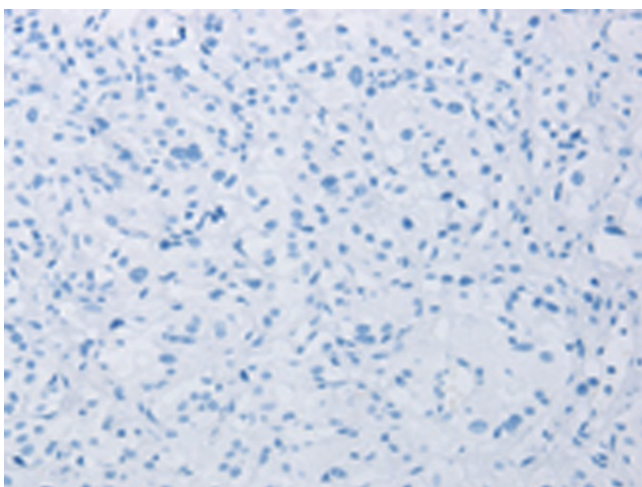
Immunohistochemistry of paraffin-embedded Human liver cancer tissue using TA349592 (VTN Antibody) at dilution 1/40 (Original magnification: ×200)



Immunohistochemistry of paraffin-embedded Human liver cancer tissue using TA349592 (VTN Antibody) at dilution 1/40, treated with fusion protein. (Original magnification: ×200)



Immunohistochemistry of paraffin-embedded Human thyroid cancer tissue using TA349592 (VTN Antibody) at dilution 1/40 (Original magnification:  $\times 200$ )



Immunohistochemistry of paraffin-embedded Human thyroid cancer tissue using TA349592 (VTN Antibody) at dilution 1/40, treated with fusion protein. (Original magnification:  $\times 200$ )