

Product datasheet for **TA349590S**

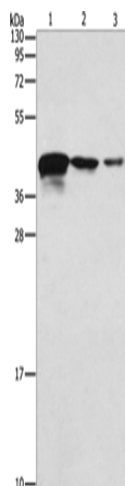
TWF2 Rabbit Polyclonal Antibody

Product data:

| | |
|-------------------------|-----------------------------------------------------------------------------------------------------------------------------------------------------------------------------------------------------------------------------------------------------------------------------------------------|
| Product Type: | Primary Antibodies |
| Applications: | IHC, WB |
| Recommended Dilution: | WB: 500-2000 WB positive control: Human endometrial carcinoma tissue, A172 and U937 cells IHC: 25-100 Positive control: Human gastric cancer Predicted cell location: Cytoplasm |
| Reactivity: | Human, Mouse |
| Host: | Rabbit |
| Isotype: | IgG |
| Clonality: | Polyclonal |
| Immunogen: | Fusion protein of human TWF2 |
| Formulation: | pH7.4 PBS, 0.05% NaN ₃ , 40% Glycerol |
| Purification: | Antigen affinity purification |
| Conjugation: | Unconjugated |
| Storage: | Store at -20°C as received. |
| Stability: | Stable for 12 months from date of receipt. |
| Predicted Protein Size: | 40 kDa |
| Gene Name: | twinfilin actin binding protein 2 |
| Database Link: | NP_009215 Entrez Gene 23999 Mouse Entrez Gene 11344 Human Q6IBS0 |
| Background: | The protein encoded by this gene was identified by its interaction with the catalytic domain of protein kinase C-zeta. The encoded protein contains an actin-binding site and an ATP-binding site. It is most closely related to twinfilin (PTK9), a conserved actin monomer-binding protein. |
| Synonyms: | A6r; A6RP; MSTP011; PTK9L |
| Protein Families: | Druggable Genome |

[View online »](#)

Product images:



Gel: 10%SDS-PAGE

Lysate: 40 µg

Lane 1-3: Human endometrial carcinoma tissue

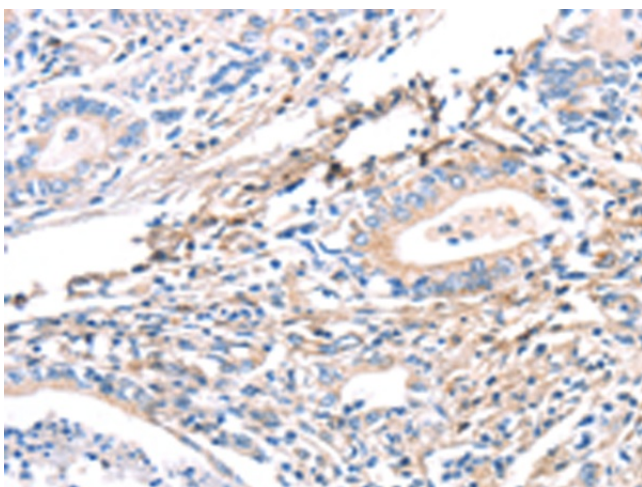
A172 cells

U937 cells

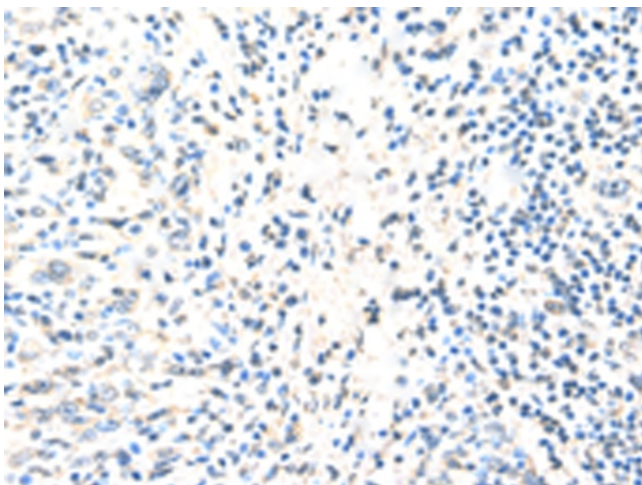
Primary antibody: [TA349590] (TWF2 Antibody) at dilution 1/800

Secondary antibody: Goat anti rabbit IgG at 1/8000 dilution

Exposure time: 20 seconds



Immunohistochemistry of paraffin-embedded Human gastric cancer tissue using [TA349590] (TWF2 Antibody) at dilution 1/40 (Original magnification: ×200)



Immunohistochemistry of paraffin-embedded Human gastric cancer tissue using [TA349590] (TWF2 Antibody) at dilution 1/40, treated with fusion protein. (Original magnification: ×200)