

Product datasheet for **TA349590**

TWF2 Rabbit Polyclonal Antibody

Product data:

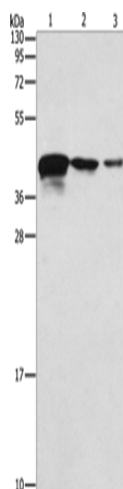
Product Type:	Primary Antibodies
Applications:	IHC, WB
Recommended Dilution:	WB: 500-2000 WB positive control: Human endometrial carcinoma tissue, A172 and U937 cells IHC: 25-100 Positive control: Human gastric cancer Predicted cell location: Cytoplasm
Reactivity:	Human, Mouse
Host:	Rabbit
Isotype:	IgG
Clonality:	Polyclonal
Immunogen:	Fusion protein of human TWF2
Formulation:	pH7.4 PBS, 0.05% NaN ₃ , 40% Glycerol
Concentration:	lot specific
Purification:	Antigen affinity purification
Conjugation:	Unconjugated
Storage:	Store at -20°C as received.
Stability:	Stable for 12 months from date of receipt.
Predicted Protein Size:	40 kDa
Gene Name:	twinfilin actin binding protein 2
Database Link:	NP_009215 Entrez Gene 23999 Mouse Entrez Gene 11344 Human Q6IBS0
Background:	The protein encoded by this gene was identified by its interaction with the catalytic domain of protein kinase C-zeta. The encoded protein contains an actin-binding site and an ATP-binding site. It is most closely related to twinfilin (PTK9), a conserved actin monomer-binding protein.
Synonyms:	A6r; A6RP; MSTP011; PTK9L



[View online »](#)

Protein Families: Druggable Genome

Product images:



Gel: 10%SDS-PAGE

Lysate: 40 μ g

Lane 1-3: Human endometrial carcinoma tissue

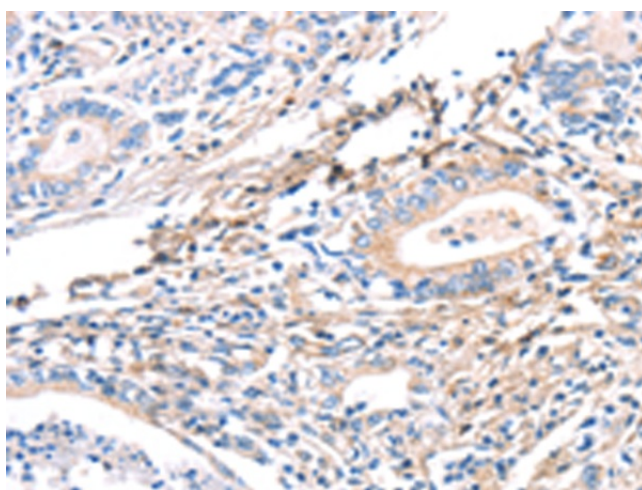
A172 cells

U937 cells

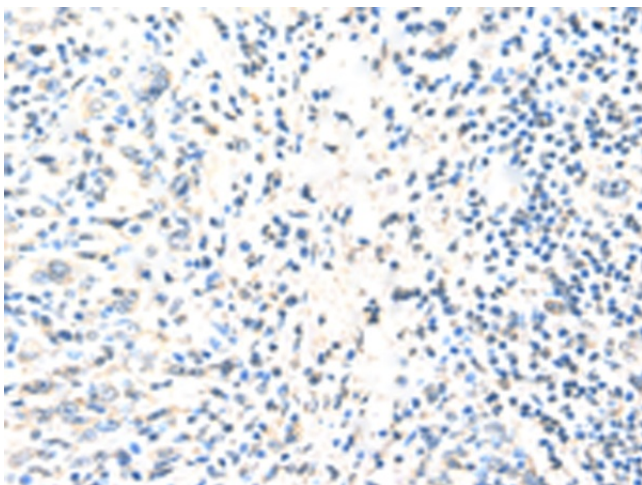
Primary antibody: TA349590 (TWF2 Antibody) at dilution 1/800

Secondary antibody: Goat anti rabbit IgG at 1/8000 dilution

Exposure time: 20 seconds



Immunohistochemistry of paraffin-embedded Human gastric cancer tissue using TA349590 (TWF2 Antibody) at dilution 1/40 (Original magnification: \times 200)



Immunohistochemistry of paraffin-embedded Human gastric cancer tissue using TA349590 (TWF2 Antibody) at dilution 1/40, treated with fusion protein. (Original magnification: $\times 200$)