

Product datasheet for **TA349588**

PGK2 Rabbit Polyclonal Antibody

Product data:

Product Type:	Primary Antibodies
Applications:	IHC, WB
Recommended Dilution:	WB: 1000-5000 WB positive control: HepG2 cells and human fetal placenta tissue, 293T cells and human testis tissue, NIH/3T3 cells IHC: 50-200 Positive control: Human gastric cancer Predicted cell location: Cytoplasm
Reactivity:	Human, Mouse, Rat
Host:	Rabbit
Isotype:	IgG
Clonality:	Polyclonal
Immunogen:	Fusion protein of human PGK2
Formulation:	pH7.4 PBS, 0.05% NaN ₃ , 40% Glycerol
Concentration:	lot specific
Purification:	Antigen affinity purification
Conjugation:	Unconjugated
Storage:	Store at -20°C as received.
Stability:	Stable for 12 months from date of receipt.
Predicted Protein Size:	45 kDa
Gene Name:	phosphoglycerate kinase 2
Database Link:	NP_620061 Entrez Gene 18663 Mouse Entrez Gene 316265 Rat Entrez Gene 5232 Human P07205



[View online »](#)

Background:

This gene is intronless, arose via retrotransposition of the phosphoglycerate kinase 1 gene, and is expressed specifically in the testis. Initially assumed to be a pseudogene, the encoded protein is actually a functional phosphoglycerate kinase that catalyzes the reversible conversion of 1,3-bisphosphoglycerate to 3-phosphoglycerate, during the Embden-Meyerhof-Parnas pathway of glycolysis, in the later stages of spermatogenesis.

Synonyms:

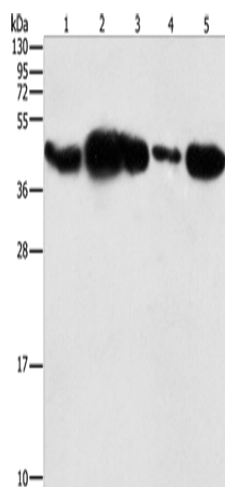
dj417L20.2; HEL-S-272; PGKB; PGKPS

Protein Families:

Druggable Genome

Protein Pathways:

Glycolysis / Gluconeogenesis, Metabolic pathways

Product images:

Gel: 10%SDS-PAGE

Lysate: 40 µg

Lane 1-5: HepG2 cells

human fetal placenta tissue

293T cells

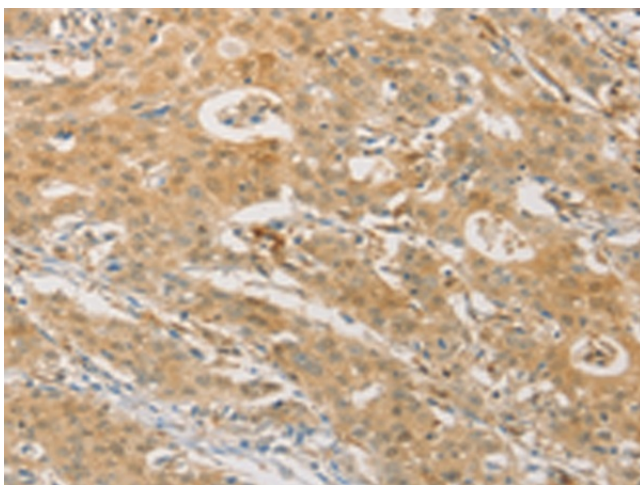
human testis tissue

NIH/3T3 cells

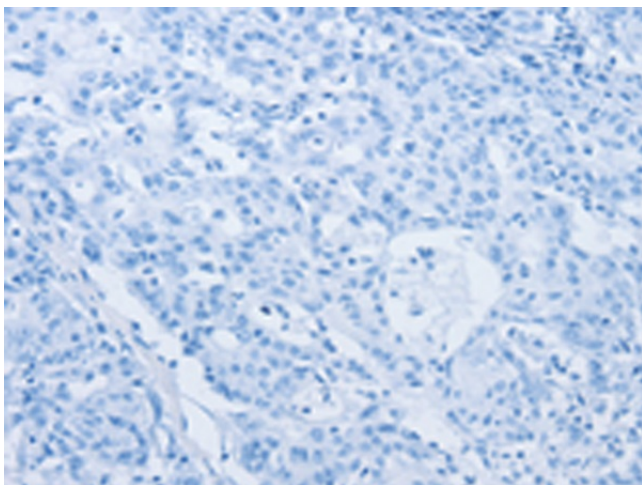
Primary antibody: TA349588 (PGK2 Antibody) at dilution 1/600

Secondary antibody: Goat anti rabbit IgG at 1/8000 dilution

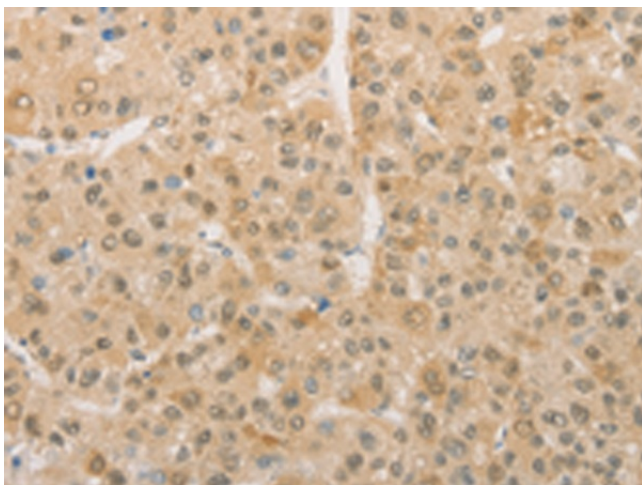
Exposure time: 5 seconds



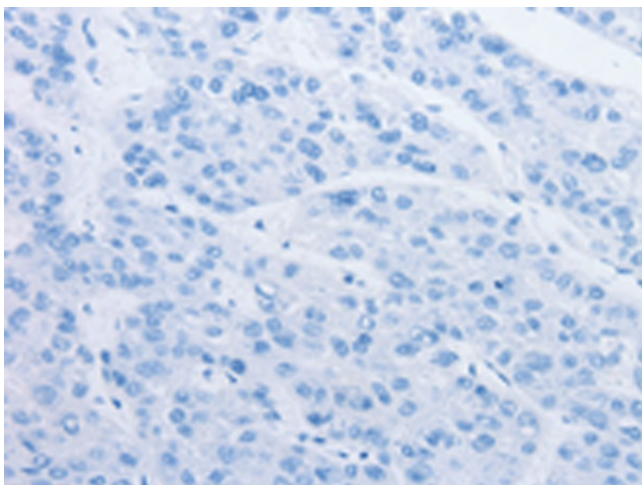
Immunohistochemistry of paraffin-embedded Human gastric cancer tissue using TA349588 (PGK2 Antibody) at dilution 1/50 (Original magnification: ×200)



Immunohistochemistry of paraffin-embedded Human gastric cancer tissue using TA349588 (PGK2 Antibody) at dilution 1/50, treated with fusion protein. (Original magnification: $\times 200$)



Immunohistochemistry of paraffin-embedded Human liver cancer tissue using TA349588 (PGK2 Antibody) at dilution 1/50 (Original magnification: $\times 200$)



Immunohistochemistry of paraffin-embedded Human liver cancer tissue using TA349588 (PGK2 Antibody) at dilution 1/50, treated with fusion protein. (Original magnification: $\times 200$)