

Product datasheet for **TA349583**

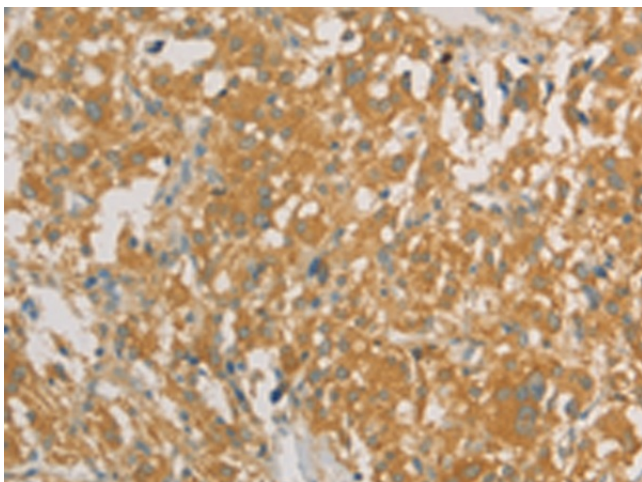
PRPSAP1 Rabbit Polyclonal Antibody

Product data:

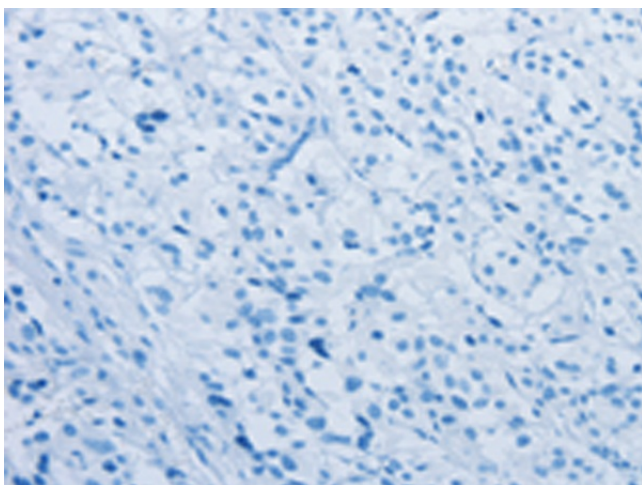
Product Type:	Primary Antibodies
Applications:	IHC
Recommended Dilution:	IHC: 100-300 Positive control: Human thyroid cancer Predicted cell location: Cytoplasm
Reactivity:	Human, Mouse, Rat
Host:	Rabbit
Isotype:	IgG
Clonality:	Polyclonal
Immunogen:	Fusion protein of human PRPSAP1
Formulation:	pH7.4 PBS, 0.05% NaN3, 40% GlycerolIn
Concentration:	lot specific
Purification:	Antigen affinity purification
Conjugation:	Unconjugated
Storage:	Store at -20°C as received.
Stability:	Stable for 12 months from date of receipt.
Gene Name:	phosphoribosyl pyrophosphate synthetase-associated protein 1
Database Link:	NP_002757 Entrez Gene 67763 Mouse Entrez Gene 5635 Human Q14558
Background:	PRPSAP1 (phosphoribosyl pyrophosphate synthetase-associated protein 1), also known as PAP39, is a 356 amino acid ubiquitous protein belonging to the ribose-phosphate pyrophosphokinase family. PRPSAP1 may play a negative regulatory role in 5-phosphoribose 1-diphosphate synthesis and is encoded by a gene mapping to human chromosome 17q25.1.
Synonyms:	PAP39



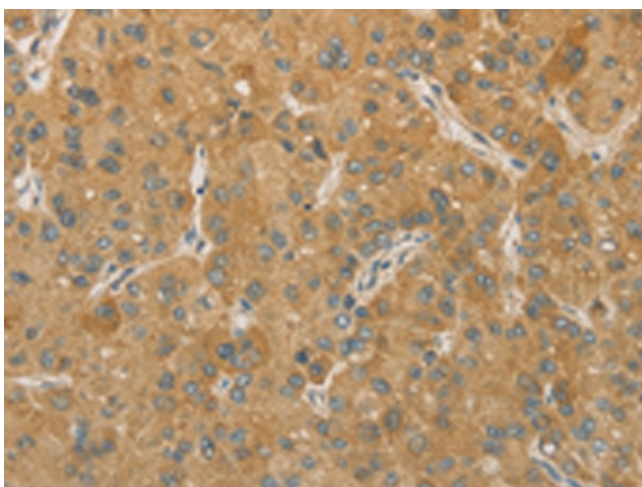
[View online »](#)

Product images:

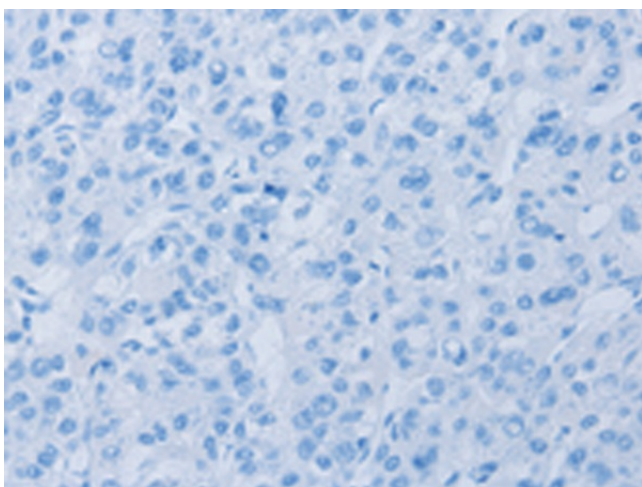
Immunohistochemistry of paraffin-embedded Human thyroid cancer tissue using TA349583 (PRPSAP1 Antibody) at dilution 1/80 (Original magnification: $\times 200$)



Immunohistochemistry of paraffin-embedded Human thyroid cancer tissue using TA349583 (PRPSAP1 Antibody) at dilution 1/80, treated with fusion protein. (Original magnification: $\times 200$)



Immunohistochemistry of paraffin-embedded Human liver cancer tissue using TA349583 (PRPSAP1 Antibody) at dilution 1/80 (Original magnification: $\times 200$)



Immunohistochemistry of paraffin-embedded Human liver cancer tissue using TA349583 (PRPSAP1 Antibody) at dilution 1/80, treated with fusion protein. (Original magnification: $\times 200$)