

## Product datasheet for **TA349580S**

### PKC epsilon (PRKCE) Rabbit Polyclonal Antibody

#### Product data:

Product Type:	Primary Antibodies
Applications:	IHC, WB
Recommended Dilution:	WB: 500-2000 WB positive control: A172 cells and mouse brain tissue, K562, 231, A549, hela and hepG2 cells IHC: 25-100 Positive control: Human liver cancer Predicted cell location: Cytoplasm
Reactivity:	Human, Mouse, Rat
Host:	Rabbit
Isotype:	IgG
Clonality:	Polyclonal
Immunogen:	Fusion protein of human PRKCE
Formulation:	pH7.4 PBS, 0.05% NaN <sub>3</sub> , 40% Glycerol
Purification:	Antigen affinity purification
Conjugation:	Unconjugated
Storage:	Store at -20°C as received.
Stability:	Stable for 12 months from date of receipt.
Predicted Protein Size:	84 kDa
Gene Name:	protein kinase C epsilon
Database Link:	<a href="#">NP_005391</a> <a href="#">Entrez Gene 18754 Mouse</a> <a href="#">Entrez Gene 29340 Rat</a> <a href="#">Entrez Gene 5581 Human</a> <a href="#">Q02156</a>



[View online »](#)

**Background:**

Protein kinase C (PKC) is a family of serine- and threonine-specific protein kinases that can be activated by calcium and the second messenger diacylglycerol. PKC family members phosphorylate a wide variety of protein targets and are known to be involved in diverse cellular signaling pathways. PKC family members also serve as major receptors for phorbol esters, a class of tumor promoters. Each member of the PKC family has a specific expression profile and is believed to play a distinct role in cells. The protein encoded by this gene is one of the PKC family members.

**Synonyms:**

nPKC-epsilon; PKCE

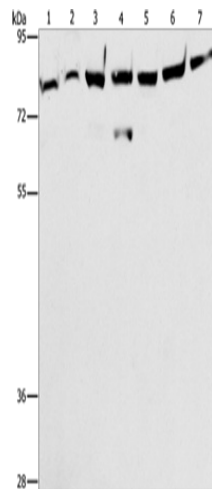
**Protein Families:**

Druggable Genome, Protein Kinase

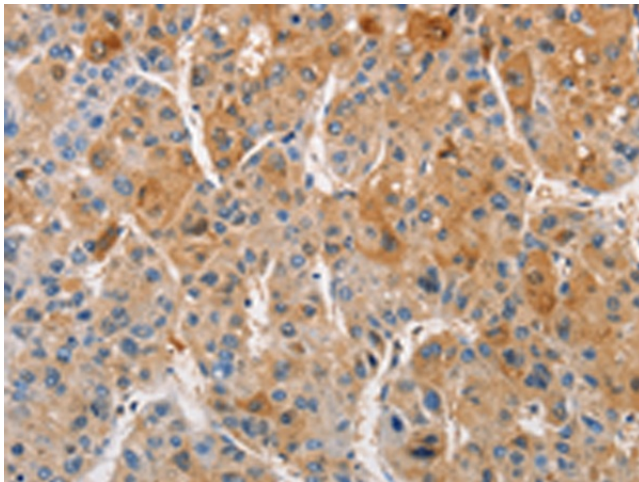
**Protein Pathways:**

Fc epsilon RI signaling pathway, Fc gamma R-mediated phagocytosis, Tight junction, Type II diabetes mellitus, Vascular smooth muscle contraction

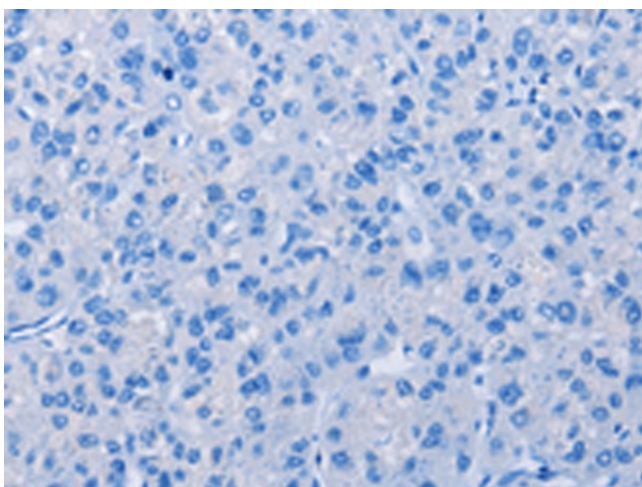
**Product images:**



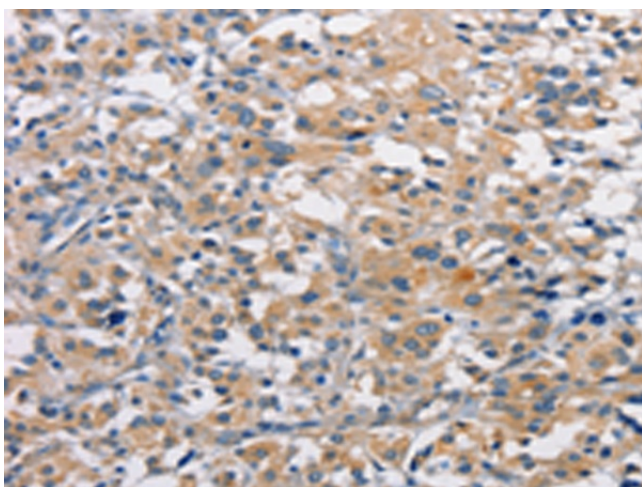
Gel: 6%SDS-PAGE  
 Lysate: 40 µg  
 Lane 1-7: A172 cells  
 mouse brain tissue  
 K562 cells  
 231 cells  
 A549 cells  
 hela cells  
 hepG2 cells  
 Primary antibody: [TA349580] (PRKCE Antibody)  
 at dilution 1/400  
 Secondary antibody: Goat anti rabbit IgG at  
 1/8000 dilution  
 Exposure time: 30 seconds



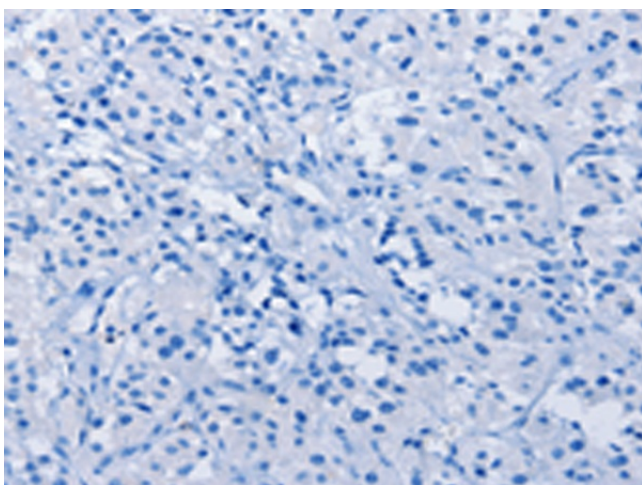
Immunohistochemistry of paraffin-embedded  
 Human liver cancer tissue using [TA349580]  
 (PRKCE Antibody) at dilution 1/50 (Original  
 magnification: ×200)



Immunohistochemistry of paraffin-embedded Human liver cancer tissue using [TA349580] (PRKCE Antibody) at dilution 1/50, treated with fusion protein. (Original magnification:  $\times 200$ )



Immunohistochemistry of paraffin-embedded Human thyroid cancer tissue using [TA349580] (PRKCE Antibody) at dilution 1/50 (Original magnification:  $\times 200$ )



Immunohistochemistry of paraffin-embedded Human thyroid cancer tissue using [TA349580] (PRKCE Antibody) at dilution 1/50, treated with fusion protein. (Original magnification:  $\times 200$ )