

## Product datasheet for **TA349578**

### PITX2 Rabbit Polyclonal Antibody

#### Product data:

Product Type:	Primary Antibodies
Applications:	WB
Recommended Dilution:	WB: 500-2000 WB positive control: A375, 293T and SKOV3 cells
Reactivity:	Human, Rat
Host:	Rabbit
Isotype:	IgG
Clonality:	Polyclonal
Immunogen:	Fusion protein of human PITX2
Formulation:	pH7.4 PBS, 0.05% NaN <sub>3</sub> , 40% Glycerol
Concentration:	lot specific
Purification:	Antigen affinity purification
Conjugation:	Unconjugated
Storage:	Store at -20°C as received.
Stability:	Stable for 12 months from date of receipt.
Predicted Protein Size:	35 kDa
Gene Name:	paired like homeodomain 2
Database Link:	<a href="#">NP_000316</a> <a href="#">Entrez Gene 54284 Rat</a> <a href="#">Entrez Gene 5308 Human</a> <a href="#">Q99697</a>



[View online »](#)

**Background:**

This gene encodes a member of the RIEG/PITX homeobox family, which is in the bicoid class of homeodomain proteins. The encoded protein acts as a transcription factor and regulates procollagen lysyl hydroxylase gene expression. This protein plays a role in the terminal differentiation of somatotroph and lactotroph cell phenotypes, is involved in the development of the eye, tooth and abdominal organs, and acts as a transcriptional regulator involved in basal and hormone-regulated activity of prolactin. Mutations in this gene are associated with Axenfeld-Rieger syndrome, iridogoniodysgenesis syndrome, and sporadic cases of Peters anomaly. A similar protein in other vertebrates is involved in the determination of left-right asymmetry during development. Alternatively spliced transcript variants encoding distinct isoforms have been described.

**Synonyms:**

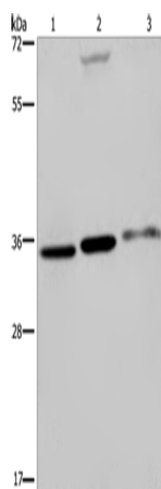
ARP1; Brx1; IDG2; IGDS; IGDS2; IHG2; IRID2; Otlx2; PTX2; RGS; RIEG; RIEG1; RS

**Protein Families:**

Transcription Factors

**Protein Pathways:**

TGF-beta signaling pathway

**Product images:**

Gel: 8%SDS-PAGE

Lysate: 40 µg

Lane 1-3: A375 cells

293T cells

SKOV3 cells

Primary antibody: TA349578 (PITX2 Antibody) at dilution 1/250

Secondary antibody: Goat anti rabbit IgG at 1/8000 dilution

Exposure time: 20 seconds