

## Product datasheet for **TA349571**

### NAT8 Rabbit Polyclonal Antibody

#### Product data:

Product Type:	Primary Antibodies
Applications:	IHC, WB
Recommended Dilution:	WB: 200-1000 WB positive control: Mouse kidney and liver tissue IHC: 50-200 Positive control: Human lung cancer Predicted cell location: Cytoplasm
Reactivity:	Human, Mouse
Host:	Rabbit
Isotype:	IgG
Clonality:	Polyclonal
Immunogen:	Fusion protein of human NAT8
Formulation:	pH7.4 PBS, 0.05% NaN <sub>3</sub> , 40% Glycerol
Concentration:	lot specific
Purification:	Antigen affinity purification
Conjugation:	Unconjugated
Storage:	Store at -20°C as received.
Stability:	Stable for 12 months from date of receipt.
Predicted Protein Size:	26 kDa
Gene Name:	N-acetyltransferase 8 (putative)
Database Link:	<a href="#">NP_003951</a> <a href="#">Entrez Gene 9027 Human</a> <a href="#">Q9UHE5</a>

**Background:** This gene, isolated using the differential display method to detect tissue-specific genes, is specifically expressed in kidney and liver. The encoded protein shows amino acid sequence similarity to N-acetyltransferases. A similar protein in *Xenopus* affects cell adhesion and gastrulation movements, and may be localized in the secretory pathway. A highly similar paralog is found in a cluster with this gene.



[View online >](#)

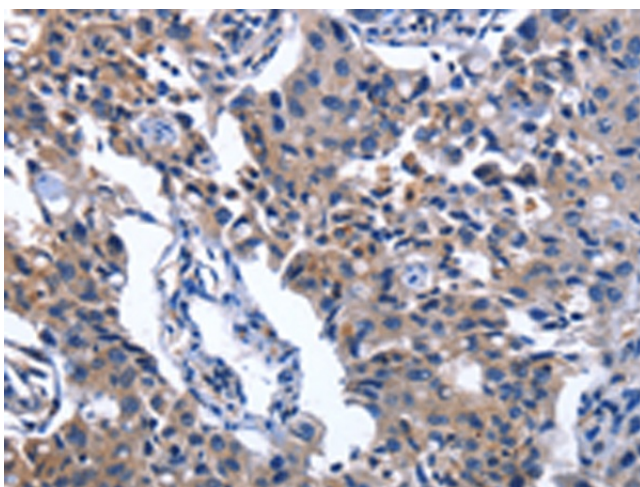
**Synonyms:** ATase2; CCNAT; CML1; GLA; Hcml1; TSC501; TSC510

**Protein Families:** Transmembrane

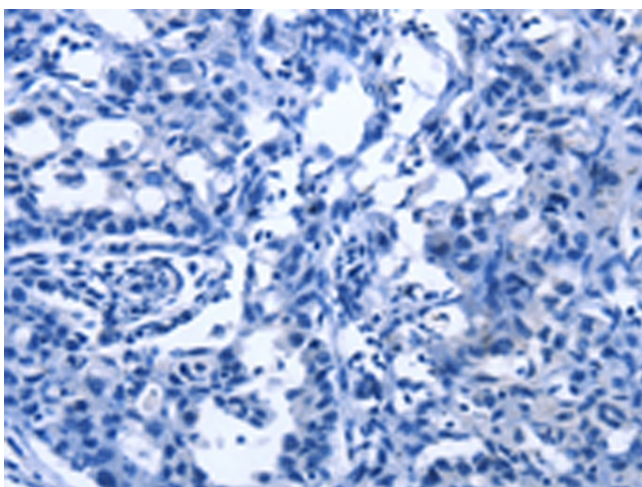
**Product images:**



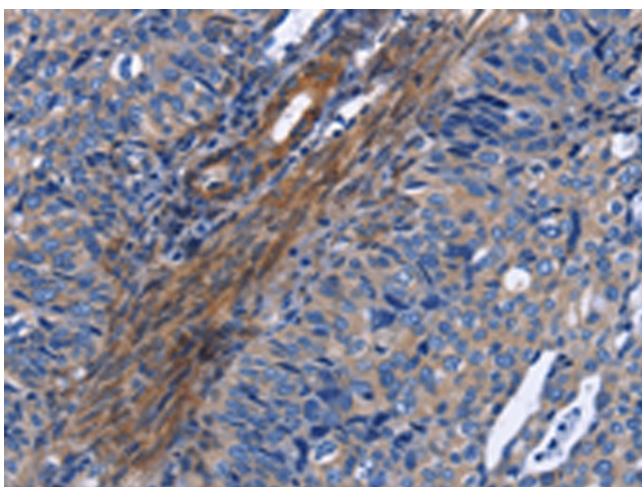
Gel: 8%SDS-PAGE  
 Lysate: 40 µg  
 Lane 1-2: Mouse kidney tissue  
 Mouse liver tissue  
 Primary antibody: TA349571 (NAT8 Antibody) at dilution 1/237.5  
 Secondary antibody: Goat anti rabbit IgG at 1/8000 dilution  
 Exposure time: 20 seconds



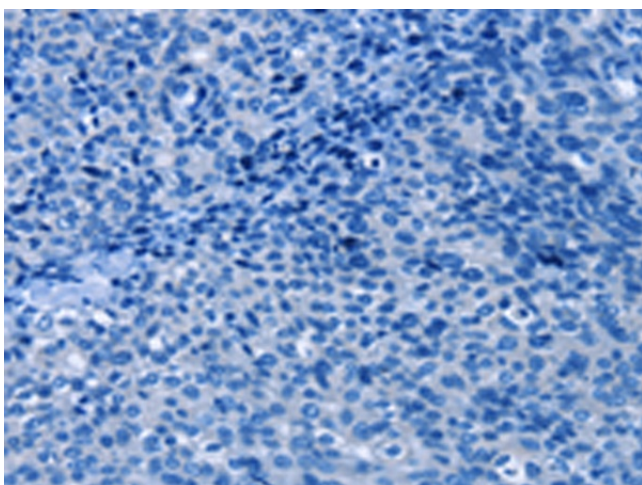
Immunohistochemistry of paraffin-embedded Human lung cancer tissue using TA349571 (NAT8 Antibody) at dilution 1/50 (Original magnification: ×200)



Immunohistochemistry of paraffin-embedded Human lung cancer tissue using TA349571 (NAT8 Antibody) at dilution 1/50, treated with fusion protein. (Original magnification: x200)



Immunohistochemistry of paraffin-embedded Human cervical cancer tissue using TA349571 (NAT8 Antibody) at dilution 1/50 (Original magnification: x200)



Immunohistochemistry of paraffin-embedded Human cervical cancer tissue using TA349571 (NAT8 Antibody) at dilution 1/50, treated with fusion protein. (Original magnification: x200)