

## Product datasheet for **TA349569S**

### Sigma1 receptor (SIGMAR1) Rabbit Polyclonal Antibody

#### Product data:

Product Type:	Primary Antibodies
Applications:	IHC, WB
Recommended Dilution:	WB: 500-2000 WB positive control: Mouse liver and brain tissue, A549 cells IHC: 100-300 Positive control: Human gastric cancer Predicted cell location: Cytoplasm
Reactivity:	Human, Mouse, Rat
Host:	Rabbit
Isotype:	IgG
Clonality:	Polyclonal
Immunogen:	Fusion protein of human SIGMAR1
Formulation:	pH7.4 PBS, 0.05% NaN <sub>3</sub> , 40% Glycerol
Purification:	Antigen affinity purification
Conjugation:	Unconjugated
Storage:	Store at -20°C as received.
Stability:	Stable for 12 months from date of receipt.
Predicted Protein Size:	25 kDa
Gene Name:	sigma non-opioid intracellular receptor 1
Database Link:	<a href="#">NP_671513</a> <a href="#">Entrez Gene 18391 MouseEntrez Gene 29336 RatEntrez Gene 10280 Human Q99720</a>



[View online »](#)

**Background:**

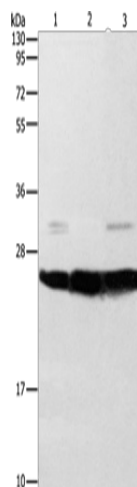
This gene encodes a receptor protein that interacts with a variety of psychotomimetic drugs, including cocaine and amphetamines. The receptor is believed to play an important role in the cellular functions of various tissues associated with the endocrine, immune, and nervous systems. As indicated by its previous name, opioid receptor sigma 1 (OPRS1), the product of this gene was erroneously thought to function as an opioid receptor; it is now thought to be a non-opioid receptor. Mutations in this gene has been associated with juvenile amyotrophic lateral sclerosis 16. Alternative splicing of this gene results in transcript variants encoding distinct isoforms.

**Synonyms:**

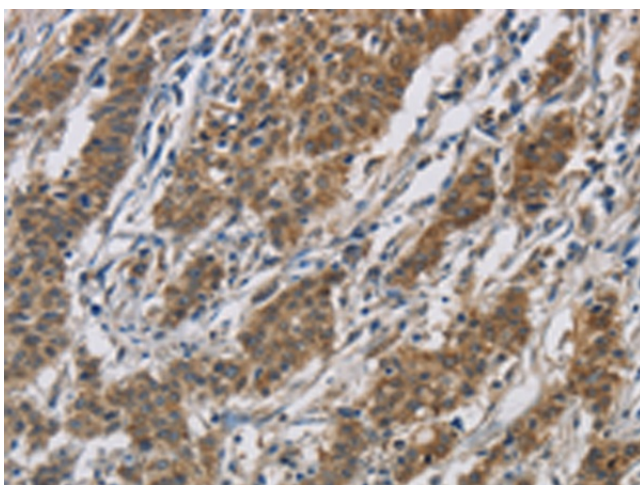
ALS16; DSMA2; hSigmaR1; OPRS1; SIG-1R; sigma1R; SR-BP; SR-BP1; SRBP

**Protein Families:**

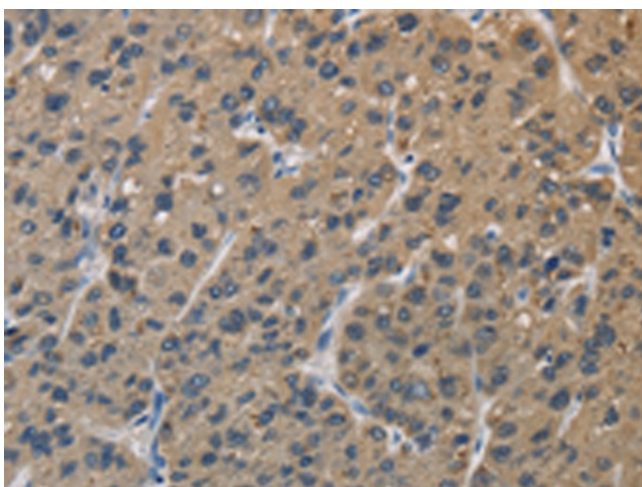
Druggable Genome, GPCR, Transmembrane

**Product images:**

Gel: 10%SDS-PAGE  
Lysate: 40 µg  
Lane 1-3: Mouse liver tissue  
Mouse brain tissue  
A549 cells  
Primary antibody: [TA349569] (SIGMAR1 Antibody) at dilution 1/310  
Secondary antibody: Goat anti rabbit IgG at 1/8000 dilution  
Exposure time: 1 second



Immunohistochemistry of paraffin-embedded Human gastric cancer tissue using [TA349569] (SIGMAR1 Antibody) at dilution 1/50. (Original magnification: ×200)



Immunohistochemistry of paraffin-embedded Human liver cancer tissue using [TA349569] (SIGMAR1 Antibody) at dilution 1/50. (Original magnification:  $\times 200$ )