

## Product datasheet for **TA349559S**

### EPS15R (EPS15L1) Rabbit Polyclonal Antibody

#### Product data:

Product Type:	Primary Antibodies
Applications:	IHC, WB
Recommended Dilution:	WB: 500-2000 WB positive control: Hela, PC3, 231 and 293T cells IHC: 25-100 Positive control: Human thyroid cancer Predicted cell location: Cytoplasm
Reactivity:	Human, Mouse
Host:	Rabbit
Isotype:	IgG
Clonality:	Polyclonal
Immunogen:	Fusion protein of human EPS15L1
Formulation:	pH7.4 PBS, 0.05% NaN <sub>3</sub> , 40% Glycerol
Purification:	Antigen affinity purification
Conjugation:	Unconjugated
Storage:	Store at -20°C as received.
Stability:	Stable for 12 months from date of receipt.
Predicted Protein Size:	94 kDa
Gene Name:	epidermal growth factor receptor pathway substrate 15 like 1
Database Link:	<a href="#">NP_067058</a> <a href="#">Entrez Gene 13859 Mouse</a> <a href="#">Entrez Gene 58513 Human</a> <a href="#">Q9UBC2</a>



[View online »](#)

**Background:**

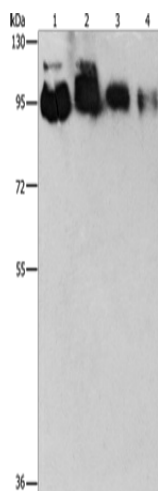
Epidermal growth factor receptor substrate 15-like 1 is a protein that in humans is encoded by the EPS15L1 gene. Seems to be a constitutive component of clathrin-coated pits that is required for receptor-mediated endocytosis. Involved in endocytosis of integrin beta-1 (ITGB1) and transferrin receptor (TFR); internalization of ITGB1 as DAB2-dependent cargo but not TFR seems to require association with DAB2. Interacts with EPS15, AGFG1/HRB and AGFG2/HRBL. Associates with the clathrin-associated adapter protein complex 2 (AP-2) By similarity. Interacts with FCHO1. Interacts with FCHO2. Interacts (via EH domains) with DAB2.

**Synonyms:**

EPS15R

**Protein Families:**

Druggable Genome

**Product images:**

Gel: 8%SDS-PAGE

Lysate: 40 µg

Lane 1-4: HeLa cells

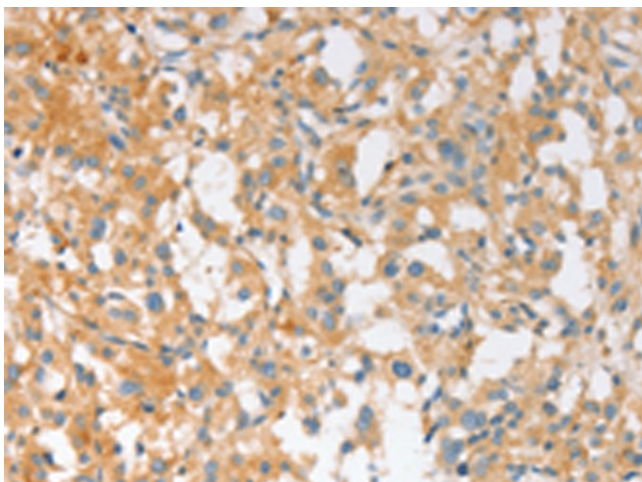
PC3 cells

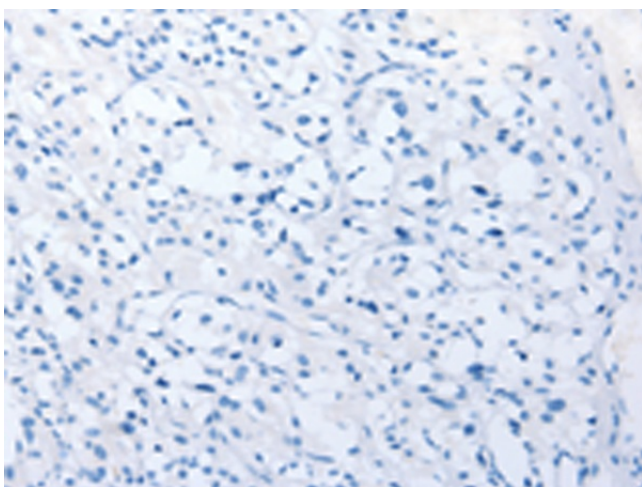
231 cells

293T cells

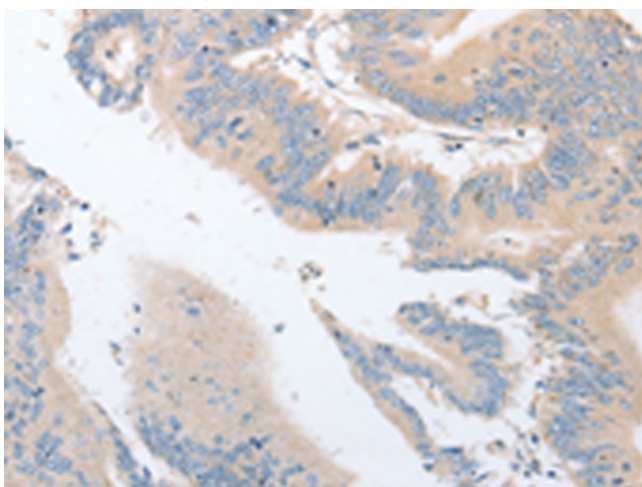
Primary antibody: [TA349559] (EPS15L1 Antibody)  
at dilution 1/350Secondary antibody: Goat anti rabbit IgG at  
1/8000 dilution

Exposure time: 30 seconds

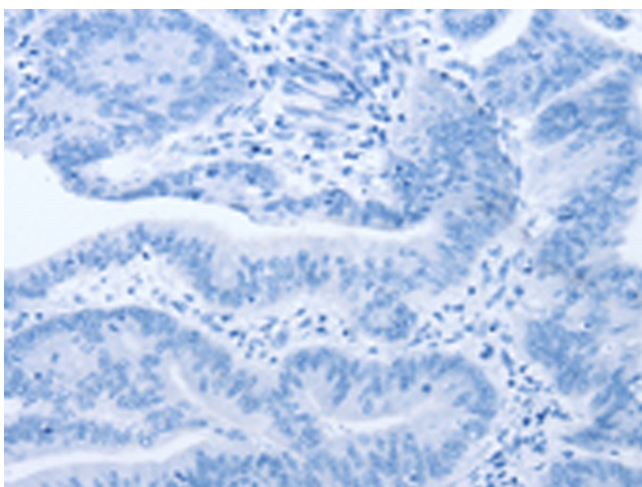
Immunohistochemistry of paraffin-embedded  
Human thyroid cancer tissue using [TA349559]  
(EPS15L1 Antibody) at dilution 1/30 (Original  
magnification: ×200)



Immunohistochemistry of paraffin-embedded Human thyroid cancer tissue using [TA349559] (EPS15L1 Antibody) at dilution 1/30, treated with fusion protein. (Original magnification: ×200)



Immunohistochemistry of paraffin-embedded Human colon cancer tissue using [TA349559] (EPS15L1 Antibody) at dilution 1/30 (Original magnification: ×200)



Immunohistochemistry of paraffin-embedded Human colon cancer tissue using [TA349559] (EPS15L1 Antibody) at dilution 1/30, treated with fusion protein. (Original magnification: ×200)