

## Product datasheet for **TA349557**

### UCH37 (UCHL5) Rabbit Polyclonal Antibody

#### Product data:

Product Type:	Primary Antibodies
Applications:	IHC, WB
Recommended Dilution:	WB: 200-1000 WB positive control: Human fetal kidney tissue and 293T cells IHC: 25-100 Positive control: Human thyroid cancer Predicted cell location: Cytoplasm
Reactivity:	Human, Mouse
Host:	Rabbit
Isotype:	IgG
Clonality:	Polyclonal
Immunogen:	Fusion protein of human UCHL5
Formulation:	pH7.4 PBS, 0.05% NaN <sub>3</sub> , 40% Glycerol
Concentration:	lot specific
Purification:	Antigen affinity purification
Conjugation:	Unconjugated
Storage:	Store at -20°C as received.
Stability:	Stable for 12 months from date of receipt.
Predicted Protein Size:	38 kDa
Gene Name:	ubiquitin C-terminal hydrolase L5
Database Link:	<a href="#">NP_057068</a> <a href="#">Entrez Gene 56207 Mouse</a> <a href="#">Entrez Gene 51377 Human</a> <a href="#">Q9Y5K5</a>



[View online »](#)

**Background:**

Ubiquitin carboxyl-terminal hydrolase isozyme L5 is an enzyme that in humans is encoded by the UCHL5 gene. Protease that specifically cleaves 'Lys-48'-linked polyubiquitin chains. Deubiquitinating enzyme associated with the 19S regulatory subunit of the 26S proteasome. Putative regulatory component of the INO80 complex; however is inactive in the INO80 complex and is activated by a transient interaction of the INO80 complex with the proteasome via ADRM1.

**Synonyms:**

CGI-70; INO80R; UCH-L5; UCH37

**Protein Families:**

Druggable Genome, Protease

**Product images:**

Gel: 12%SDS-PAGE

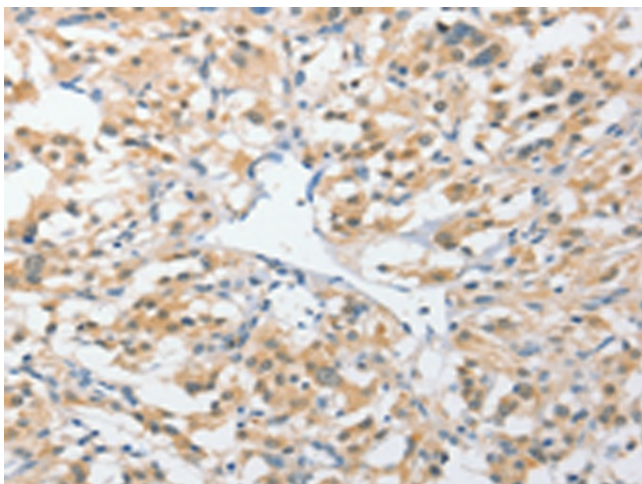
Lysate: 40 µg

Lane 1-2: Human fetal kidney tissue  
293T cells

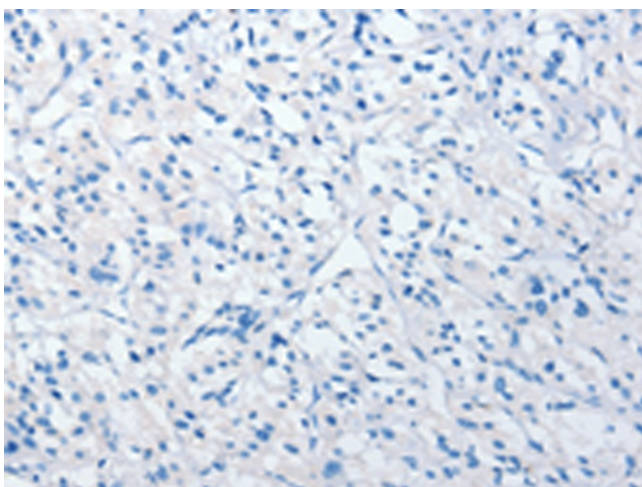
Primary antibody: TA349557 (UCHL5 Antibody) at  
dilution 1/250

Secondary antibody: Goat anti rabbit IgG at  
1/8000 dilution

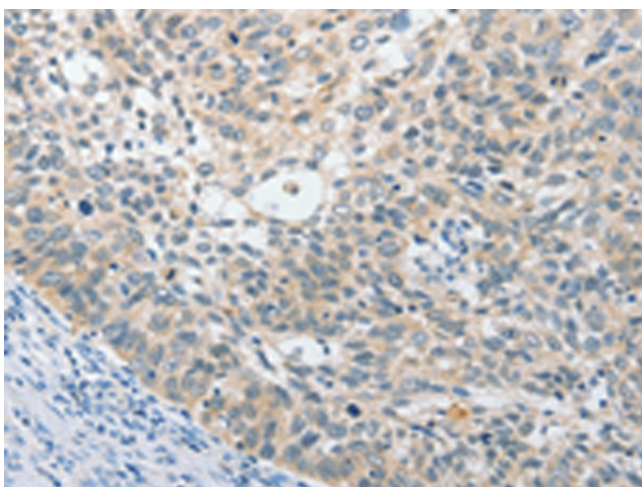
Exposure time: 15 seconds



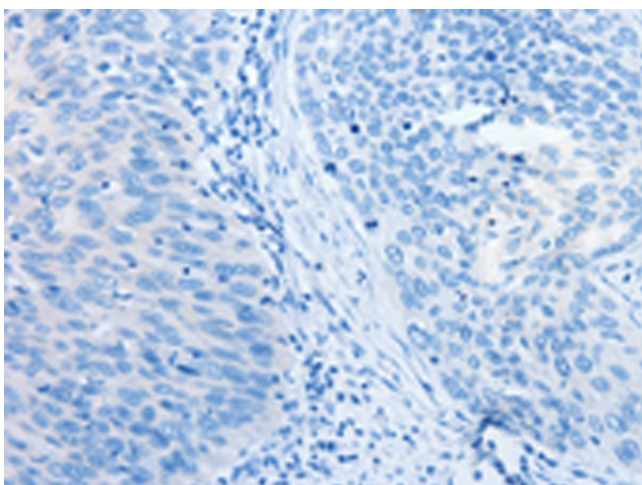
Immunohistochemistry of paraffin-embedded  
Human thyroid cancer tissue using TA349557  
(UCHL5 Antibody) at dilution 1/25 (Original  
magnification: ×200)



Immunohistochemistry of paraffin-embedded Human thyroid cancer tissue using TA349557 (UCHL5 Antibody) at dilution 1/25, treated with fusion protein. (Original magnification:  $\times 200$ )



Immunohistochemistry of paraffin-embedded Human cervical cancer tissue using TA349557 (UCHL5 Antibody) at dilution 1/25 (Original magnification:  $\times 200$ )



Immunohistochemistry of paraffin-embedded Human cervical cancer tissue using TA349557 (UCHL5 Antibody) at dilution 1/25, treated with fusion protein. (Original magnification:  $\times 200$ )