

Product datasheet for **TA349556S**

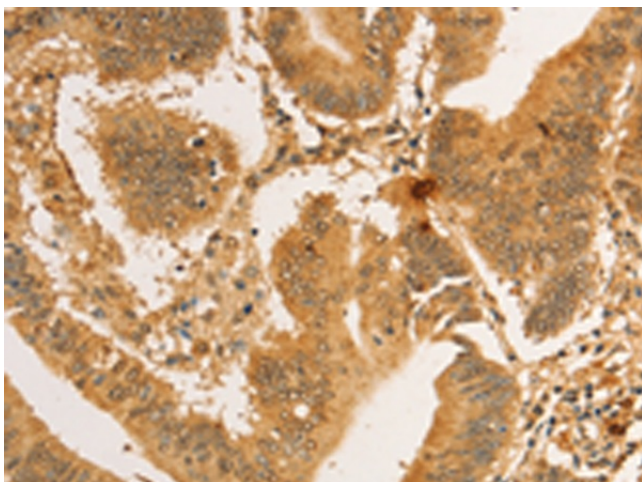
RPL26L1 Rabbit Polyclonal Antibody

Product data:

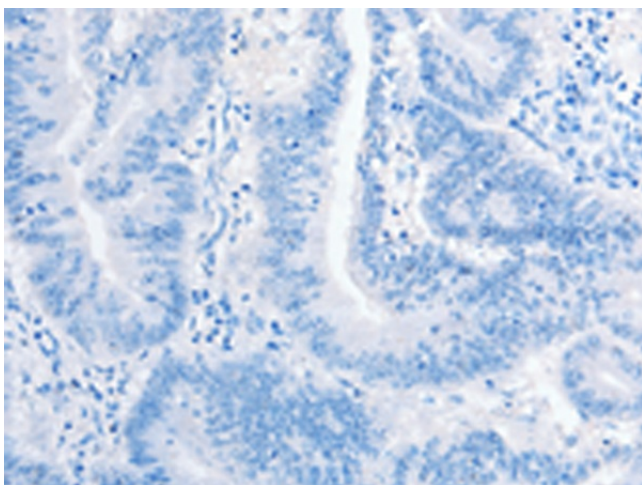
| | |
|-----------------------|---|
| Product Type: | Primary Antibodies |
| Applications: | IHC |
| Recommended Dilution: | IHC: 50-200 Positive control: Human colon cancer Predicted cell location: Cytoplasm or Nucleus |
| Reactivity: | Human |
| Host: | Rabbit |
| Isotype: | IgG |
| Clonality: | Polyclonal |
| Immunogen: | Fusion protein of human RPL26L1 |
| Formulation: | pH7.4 PBS, 0.05% NaN ₃ , 40% GlycerolIn |
| Purification: | Antigen affinity purification |
| Conjugation: | Unconjugated |
| Storage: | Store at -20°C as received. |
| Stability: | Stable for 12 months from date of receipt. |
| Gene Name: | ribosomal protein L26 like 1 |
| Database Link: | NP_057177 Entrez Gene 51121 Human Q9UNX3 |
| Background: | This gene encodes a protein that shares high sequence similarity with ribosomal protein L26. It is not currently known whether the encoded protein is a functional ribosomal protein or whether it has evolved a function that is independent of the ribosome. Transcript variants utilizing alternative polyA signals exist. |
| Synonyms: | RPL26P1 |
| Protein Pathways: | Ribosome |



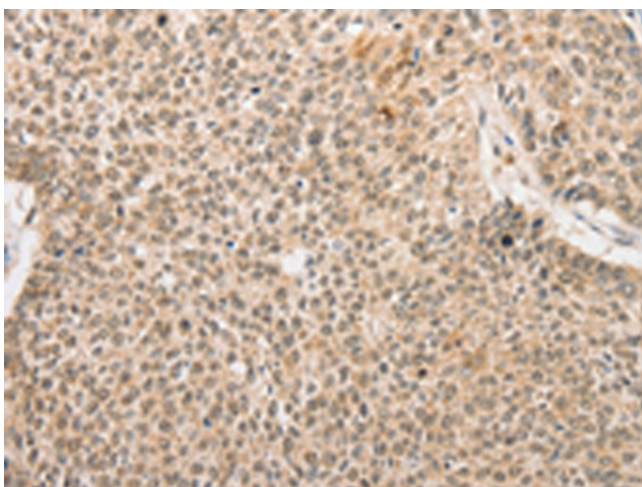
[View online »](#)

Product images:

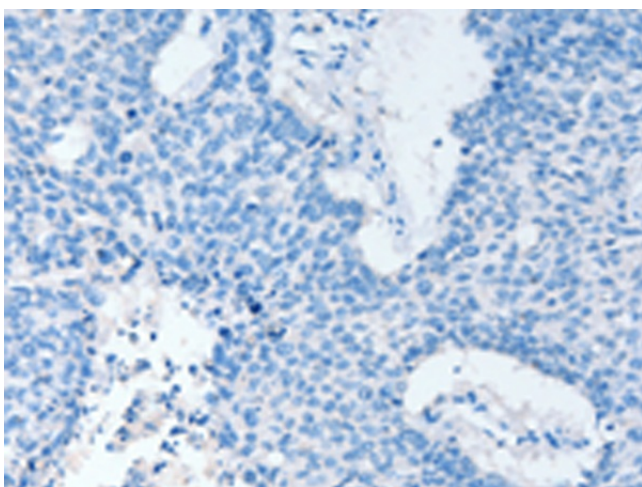
Immunohistochemistry of paraffin-embedded Human colon cancer tissue using [TA349556] (RPL26L1 Antibody) at dilution 1/30 (Original magnification: $\times 200$)



Immunohistochemistry of paraffin-embedded Human colon cancer tissue using [TA349556] (RPL26L1 Antibody) at dilution 1/30, treated with fusion protein. (Original magnification: $\times 200$)



Immunohistochemistry of paraffin-embedded Human lung cancer tissue using [TA349556] (RPL26L1 Antibody) at dilution 1/30 (Original magnification: $\times 200$)



Immunohistochemistry of paraffin-embedded Human lung cancer tissue using [TA349556] (RPL26L1 Antibody) at dilution 1/30, treated with fusion protein. (Original magnification: $\times 200$)