

Product datasheet for **TA349547S**

K Cadherin (CDH6) Rabbit Polyclonal Antibody

Product data:

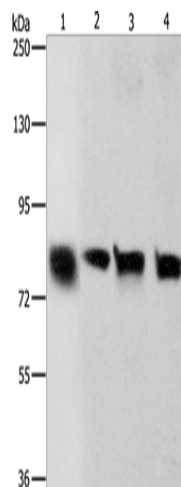
Product Type:	Primary Antibodies
Applications:	IHC, WB
Recommended Dilution:	WB: 500-2000 WB positive control: Hela and A549 cells, human liver cancer tissue and HT-29 cells IHC: 50-200 Positive control: Human brain Predicted cell location: Cytoplasm
Reactivity:	Human, Mouse, Rat
Host:	Rabbit
Isotype:	IgG
Clonality:	Polyclonal
Immunogen:	Fusion protein of human CDH6
Formulation:	pH7.4 PBS, 0.05% NaN ₃ , 40% Glycerol
Purification:	Antigen affinity purification
Conjugation:	Unconjugated
Storage:	Store at -20°C as received.
Stability:	Stable for 12 months from date of receipt.
Predicted Protein Size:	88 kDa
Gene Name:	cadherin 6
Database Link:	NP_004923 Entrez Gene 12563 MouseEntrez Gene 25409 RatEntrez Gene 1004 Human P55285
Background:	This gene encodes a member of the cadherin superfamily. Cadherins are membrane glycoproteins that mediate homophilic cell-cell adhesion and play critical roles in cell differentiation and morphogenesis. The encoded protein is a type II cadherin and may play a role in kidney development as well as endometrium and placenta formation. Decreased expression of this gene may be associated with tumor growth and metastasis.
Synonyms:	CAD6; KCAD



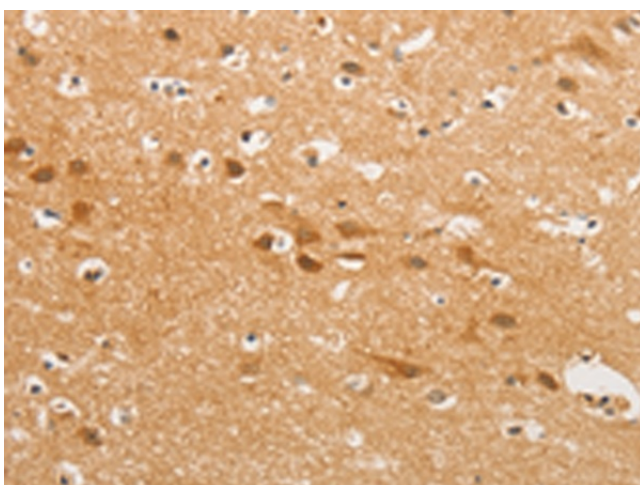
[View online »](#)

Protein Families: Transmembrane

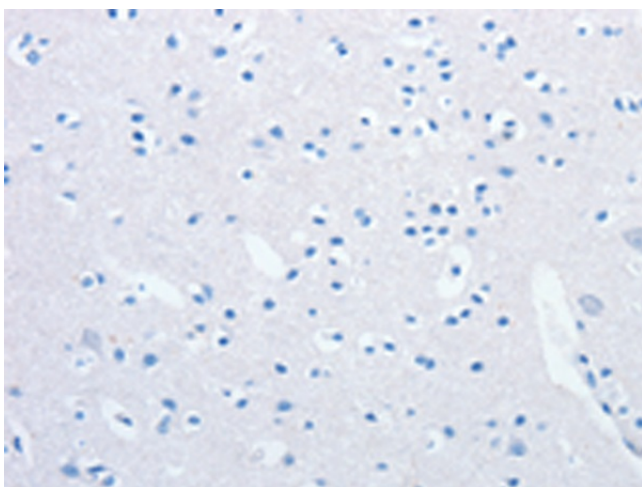
Product images:



Gel: 8%SDS-PAGE
Lysate: 40 µg
Lane 1-4: HeLa cells
A549 cells
human liver cancer tissue
HT29 cells
Primary antibody: [TA349547] (CDH6 Antibody) at dilution 1/500
Secondary antibody: Goat anti rabbit IgG at 1/8000 dilution
Exposure time: 2 minutes



Immunohistochemistry of paraffin-embedded Human brain tissue using [TA349547] (CDH6 Antibody) at dilution 1/50 (Original magnification: ×200)



Immunohistochemistry of paraffin-embedded Human brain tissue using [TA349547] (CDH6 Antibody) at dilution 1/50, treated with fusion protein. (Original magnification: x200)