

## Product datasheet for **TA349547**

### **K Cadherin (CDH6) Rabbit Polyclonal Antibody**

#### **Product data:**

Product Type:	Primary Antibodies
Applications:	IHC, WB
Recommended Dilution:	WB: 500-2000 WB positive control: Hela and A549 cells, human liver cancer tissue and HT-29 cells IHC: 50-200 Positive control: Human brain Predicted cell location: Cytoplasm
Reactivity:	Human, Mouse, Rat
Host:	Rabbit
Isotype:	IgG
Clonality:	Polyclonal
Immunogen:	Fusion protein of human CDH6
Formulation:	pH7.4 PBS, 0.05% NaN <sub>3</sub> , 40% Glycerol
Concentration:	lot specific
Purification:	Antigen affinity purification
Conjugation:	Unconjugated
Storage:	Store at -20°C as received.
Stability:	Stable for 12 months from date of receipt.
Predicted Protein Size:	88 kDa
Gene Name:	cadherin 6
Database Link:	<a href="#">NP_004923</a> <a href="#">Entrez Gene 12563 Mouse</a> <a href="#">Entrez Gene 25409 Rat</a> <a href="#">Entrez Gene 1004 Human</a> <a href="#">P55285</a>

**Background:** This gene encodes a member of the cadherin superfamily. Cadherins are membrane glycoproteins that mediate homophilic cell-cell adhesion and play critical roles in cell differentiation and morphogenesis. The encoded protein is a type II cadherin and may play a role in kidney development as well as endometrium and placenta formation. Decreased expression of this gene may be associated with tumor growth and metastasis.

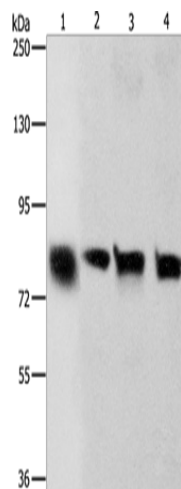


[View online »](#)

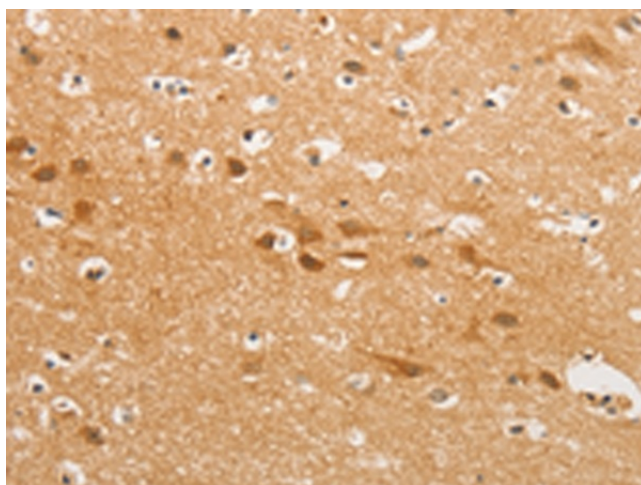
**Synonyms:** CAD6; KCAD

**Protein Families:** Transmembrane

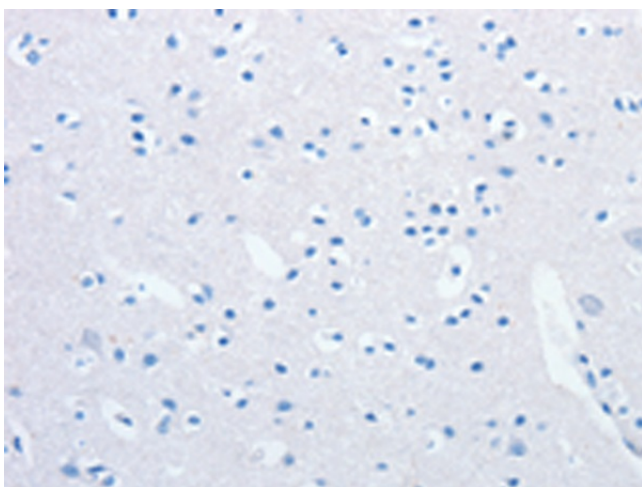
**Product images:**



Gel: 8%SDS-PAGE  
 Lysate: 40 µg  
 Lane 1-4: HeLa cells  
 A549 cells  
 human liver cancer tissue  
 HT29 cells  
 Primary antibody: TA349547 (CDH6 Antibody) at dilution 1/500  
 Secondary antibody: Goat anti rabbit IgG at 1/8000 dilution  
 Exposure time: 2 minutes



Immunohistochemistry of paraffin-embedded Human brain tissue using TA349547 (CDH6 Antibody) at dilution 1/50 (Original magnification: ×200)



Immunohistochemistry of paraffin-embedded Human brain tissue using TA349547 (CDH6 Antibody) at dilution 1/50, treated with fusion protein. (Original magnification: x200)