

## Product datasheet for **TA349535S**

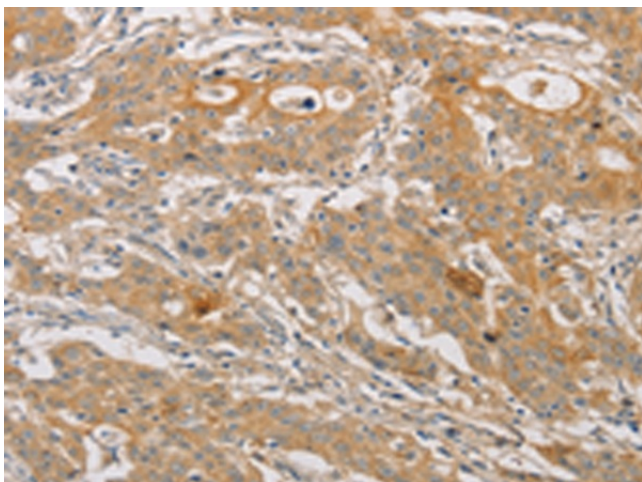
### ARSK Rabbit Polyclonal Antibody

#### Product data:

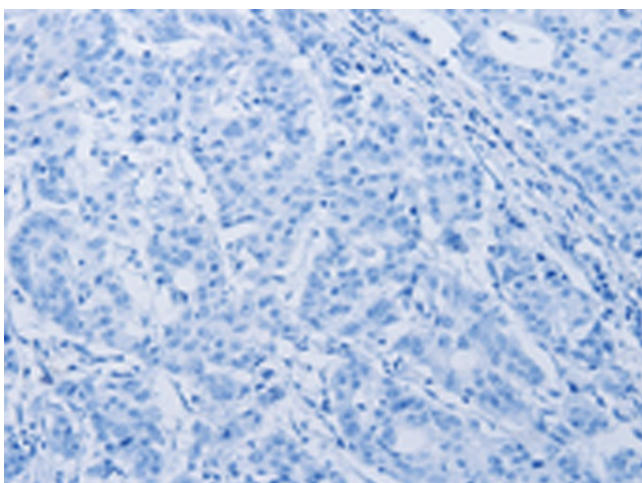
Product Type:	Primary Antibodies
Applications:	IHC
Recommended Dilution:	IHC: 50-200 Positive control: Human gastric cancer Predicted cell location: Cytoplasm
Reactivity:	Human, Mouse, Rat
Host:	Rabbit
Isotype:	IgG
Clonality:	Polyclonal
Immunogen:	Fusion protein of human ARSK
Formulation:	pH7.4 PBS, 0.05% NaN <sub>3</sub> , 40% Glycerol
Purification:	Antigen affinity purification
Conjugation:	Unconjugated
Storage:	Store at -20°C as received.
Stability:	Stable for 12 months from date of receipt.
Gene Name:	arylsulfatase family member K
Database Link:	<a href="#">NP_937793</a> <a href="#">Entrez Gene 77041 Mouse</a> <a href="#">Entrez Gene 365619 Rat</a> <a href="#">Entrez Gene 153642 Human</a> <a href="#">Q6UWY0</a>
Background:	Sulfatases (EC 3.1.5.6), such as ARSK, hydrolyze sulfate esters from sulfated steroids, carbohydrates, proteoglycans, and glycolipids. They are involved in hormone biosynthesis, modulation of cell signaling, and degradation of macromolecules.
Synonyms:	TSULF
Protein Families:	Druggable Genome, Secreted Protein, Transmembrane



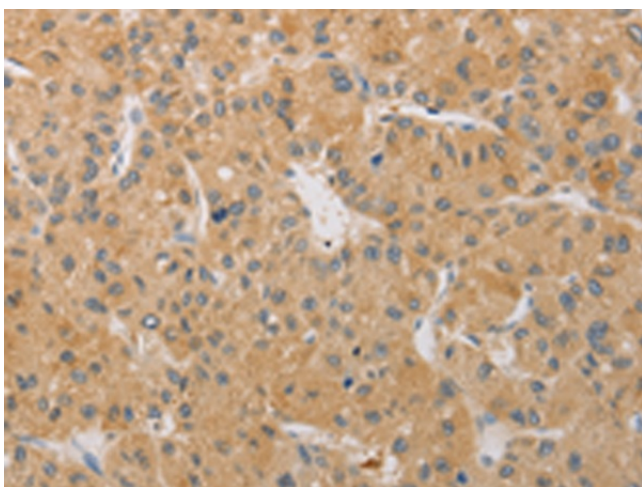
[View online »](#)

**Product images:**

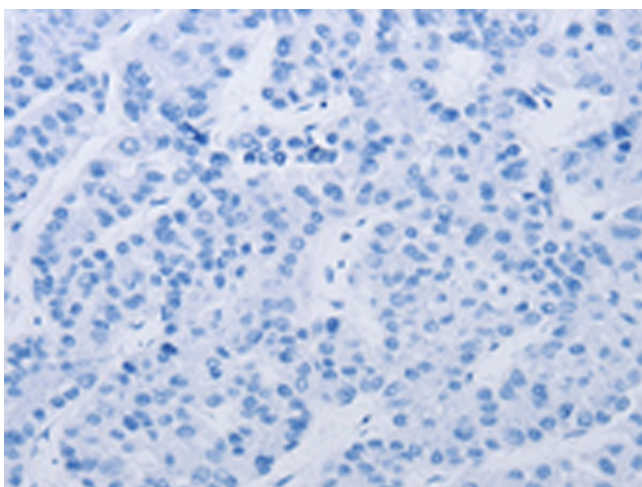
Immunohistochemistry of paraffin-embedded Human gastric cancer tissue using [TA349535] (ARSK Antibody) at dilution 1/30 (Original magnification:  $\times 200$ )



Immunohistochemistry of paraffin-embedded Human gastric cancer tissue using [TA349535] (ARSK Antibody) at dilution 1/30, treated with fusion protein. (Original magnification:  $\times 200$ )



Immunohistochemistry of paraffin-embedded Human liver cancer tissue using [TA349535] (ARSK Antibody) at dilution 1/30 (Original magnification:  $\times 200$ )



Immunohistochemistry of paraffin-embedded Human liver cancer tissue using [TA349535] (ARSK Antibody) at dilution 1/30, treated with fusion protein. (Original magnification:  $\times 200$ )