

## Product datasheet for **TA349530S**

### IFITM3 Rabbit Polyclonal Antibody

#### Product data:

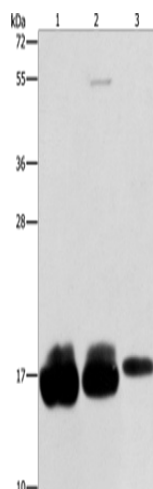
Product Type:	Primary Antibodies
Applications:	IHC, WB
Recommended Dilution:	WB: 1000-5000 WB positive control: Hela, hepg2 and A375 cells IHC: 25-100 Positive control: Human breast cancer Predicted cell location: Cytoplasm
Reactivity:	Human
Host:	Rabbit
Isotype:	IgG
Clonality:	Polyclonal
Immunogen:	Fusion protein of human IFITM3
Formulation:	pH7.4 PBS, 0.05% NaN <sub>3</sub> , 40% Glycerol
Purification:	Antigen affinity purification
Conjugation:	Unconjugated
Storage:	Store at -20°C as received.
Stability:	Stable for 12 months from date of receipt.
Predicted Protein Size:	15 kDa
Gene Name:	interferon induced transmembrane protein 3
Database Link:	<a href="#">NP_066362</a> <a href="#">Entrez Gene 10410 Human</a> <a href="#">Q01628</a>
Background:	The protein encoded by this gene is an interferon-induced membrane protein that helps confer immunity to influenza A H1N1 virus, West Nile virus, and dengue virus. Two transcript variants, only one of them protein-coding, have been found for this gene. Another variant encoding an N-terminally truncated isoform has been reported, but the full-length nature of this variant has not been determined.
Synonyms:	1-8U; DSPA2b; IP15



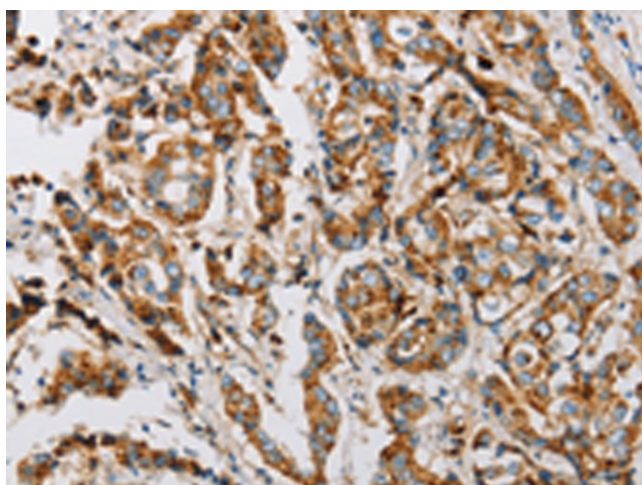
[View online »](#)

Protein Families: Transmembrane

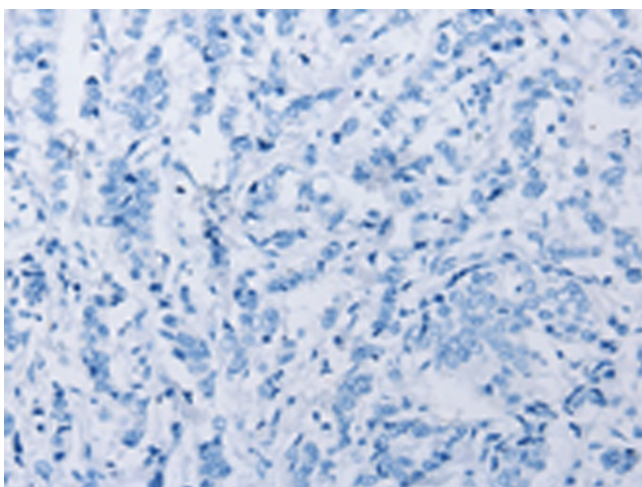
### Product images:



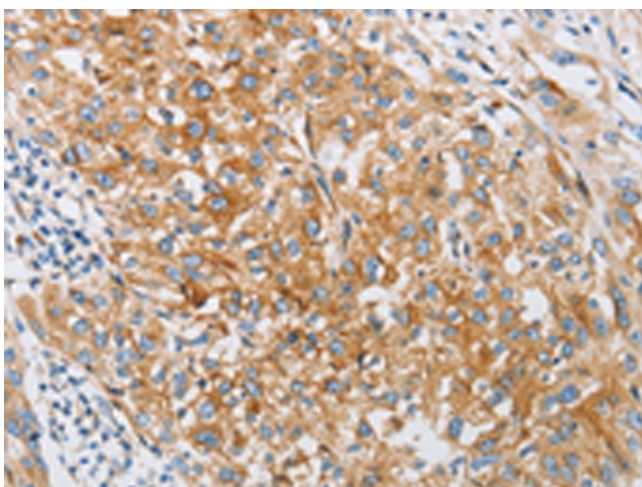
Gel: 12%SDS-PAGE  
Lysate: 40  $\mu$ g  
Lane 1-3: HeLa cells  
hepg2 cells  
A375 cells  
Primary antibody: [TA349530] (IFITM3 Antibody)  
at dilution 1/500  
Secondary antibody: Goat anti rabbit IgG at  
1/8000 dilution  
Exposure time: 10 seconds



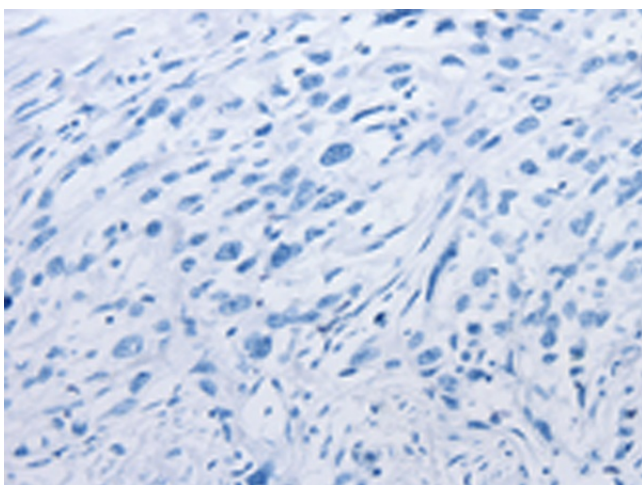
Immunohistochemistry of paraffin-embedded  
Human breast cancer tissue using [TA349530]  
(IFITM3 Antibody) at dilution 1/25 (Original  
magnification:  $\times$ 200)



Immunohistochemistry of paraffin-embedded Human breast cancer tissue using [TA349530] (IFITM3 Antibody) at dilution 1/25, treated with fusion protein. (Original magnification: ×200)



Immunohistochemistry of paraffin-embedded Human esophagus cancer tissue using [TA349530] (IFITM3 Antibody) at dilution 1/25 (Original magnification: ×200)



Immunohistochemistry of paraffin-embedded Human esophagus cancer tissue using [TA349530] (IFITM3 Antibody) at dilution 1/25, treated with fusion protein. (Original magnification: ×200)