

## Product datasheet for **TA349526S**

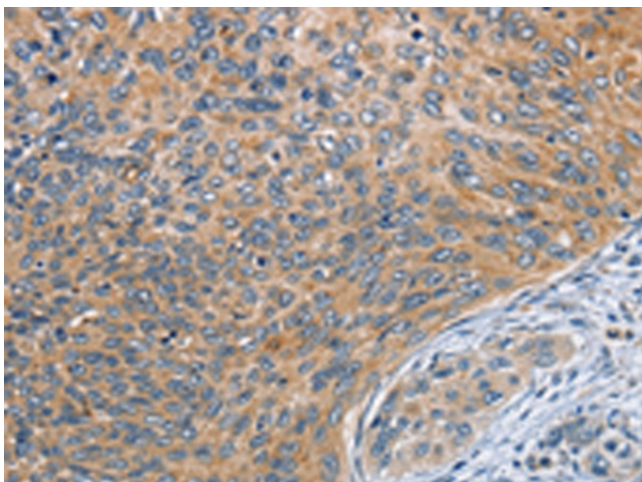
### **SPIRE2 Rabbit Polyclonal Antibody**

#### **Product data:**

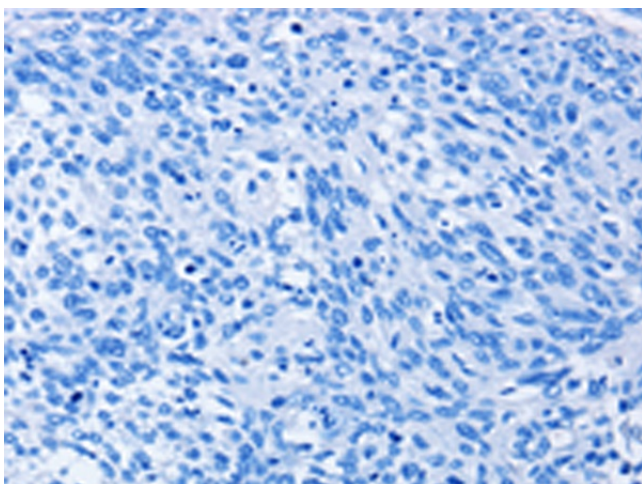
<b>Product Type:</b>	Primary Antibodies
<b>Applications:</b>	IHC
<b>Recommended Dilution:</b>	IHC: 25-100 Positive control: Human cervical cancer Predicted cell location: Cytoplasm
<b>Reactivity:</b>	Human
<b>Host:</b>	Rabbit
<b>Isotype:</b>	IgG
<b>Clonality:</b>	Polyclonal
<b>Immunogen:</b>	Fusion protein of human SPIRE2
<b>Formulation:</b>	pH7.4 PBS, 0.05% NaN <sub>3</sub> , 40% Glycerol
<b>Purification:</b>	Antigen affinity purification
<b>Conjugation:</b>	Unconjugated
<b>Storage:</b>	Store at -20°C as received.
<b>Stability:</b>	Stable for 12 months from date of receipt.
<b>Gene Name:</b>	spire type actin nucleation factor 2
<b>Database Link:</b>	<a href="#">NP_115827</a> <a href="#">Entrez Gene 84501 Human</a> <a href="#">Q8WWL2</a>
<b>Background:</b>	SPIRE2, is a 714 amino acid protein belonging to the spire family. Acts as an actin nucleation factor, remains associated with the slow-growing pointed end of the new filament. Involved in intracellular vesicle transport along actin fibers, providing a novel link between actin cytoskeleton dynamics and intracellular transport. Required for asymmetric spindle positioning and asymmetric cell division during meiosis. Required for normal formation of the cleavage furrow and for polar body extrusion during female germ cell meiosis.
<b>Synonyms:</b>	Spir-2
<b>Protein Pathways:</b>	Dorso-ventral axis formation



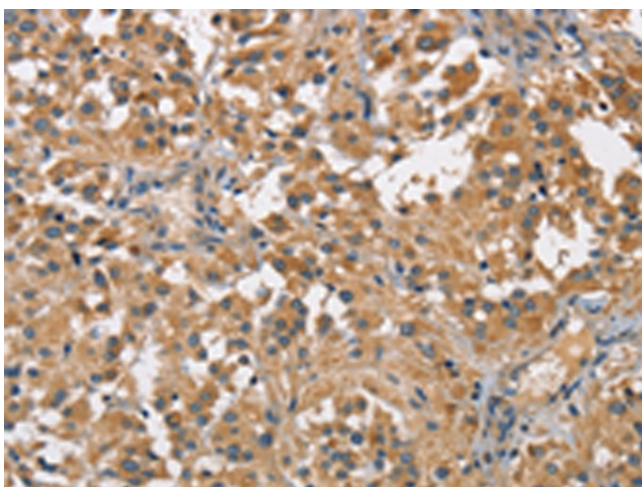
[View online »](#)

**Product images:**

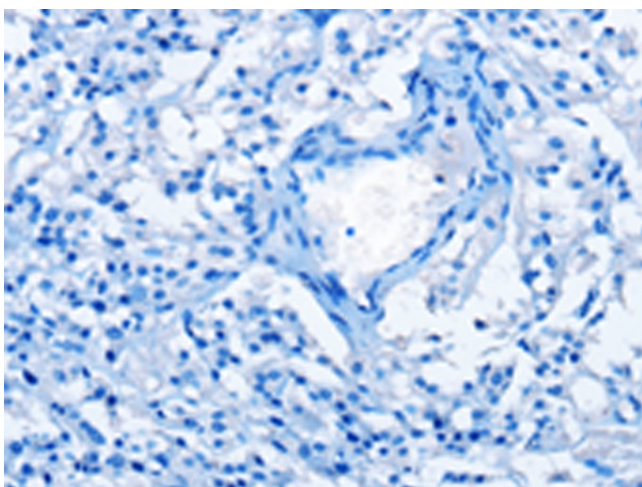
Immunohistochemistry of paraffin-embedded Human cervical cancer tissue using [TA349526] (SPIRE2 Antibody) at dilution 1/30 (Original magnification: ×200)



Immunohistochemistry of paraffin-embedded Human cervical cancer tissue using [TA349526] (SPIRE2 Antibody) at dilution 1/30, treated with fusion protein. (Original magnification: ×200)



Immunohistochemistry of paraffin-embedded Human thyroid cancer tissue using [TA349526] (SPIRE2 Antibody) at dilution 1/30 (Original magnification: ×200)



Immunohistochemistry of paraffin-embedded Human thyroid cancer tissue using [TA349526] (SPIRE2 Antibody) at dilution 1/30, treated with fusion protein. (Original magnification: ×200)