

## Product datasheet for **TA349521S**

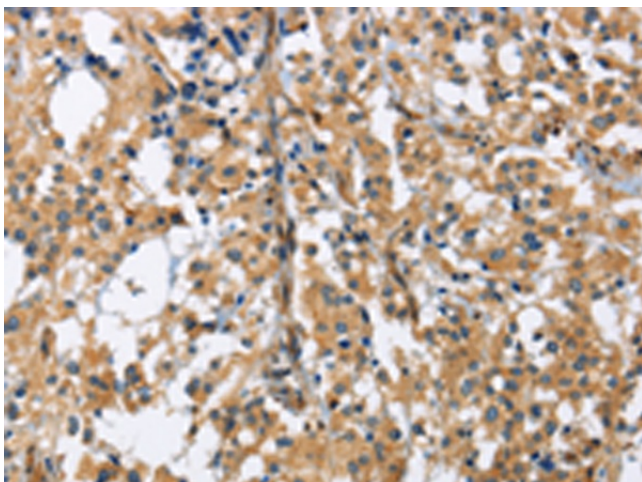
### GAB1 Rabbit Polyclonal Antibody

#### Product data:

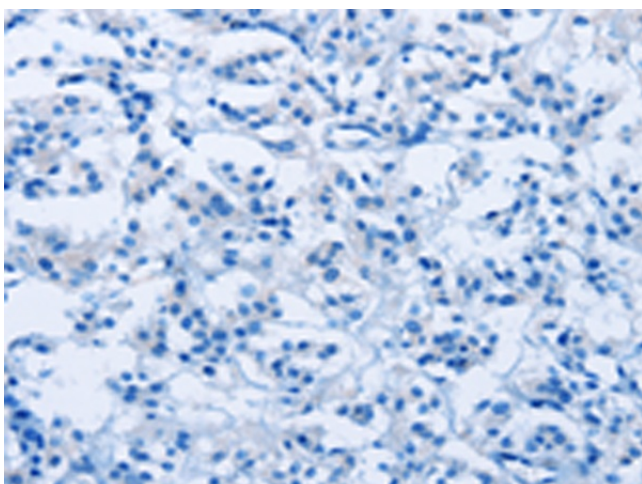
Product Type:	Primary Antibodies
Applications:	IHC
Recommended Dilution:	IHC: 25-100 Positive control: Human thyroid cancer Predicted cell location: Cytoplasm
Reactivity:	Human, Mouse
Host:	Rabbit
Isotype:	IgG
Clonality:	Polyclonal
Immunogen:	Fusion protein of human GAB1
Formulation:	pH7.4 PBS, 0.05% NaN <sub>3</sub> , 40% Glycerol
Purification:	Antigen affinity purification
Conjugation:	Unconjugated
Storage:	Store at -20°C as received.
Stability:	Stable for 12 months from date of receipt.
Gene Name:	GRB2 associated binding protein 1
Database Link:	<a href="#">NP_002030</a> <a href="#">Entrez Gene 14388 Mouse</a> <a href="#">Entrez Gene 2549 Human</a> <a href="#">Q13480</a>
Background:	The protein encoded by this gene is a member of the IRS1-like multisubstrate docking protein family. It is an important mediator of branching tubulogenesis and plays a central role in cellular growth response, transformation and apoptosis. Two transcript variants encoding different isoforms have been found for this gene.
Synonyms:	GRB2-associated binding protein 1
Protein Families:	Druggable Genome
Protein Pathways:	ErbB signaling pathway, Neurotrophin signaling pathway, Renal cell carcinoma



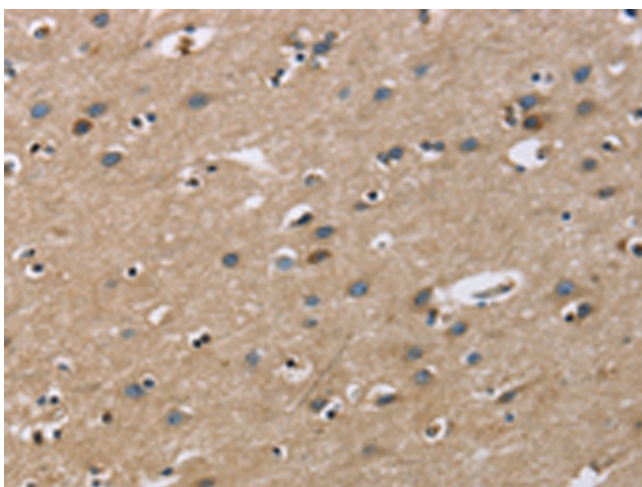
[View online »](#)

**Product images:**

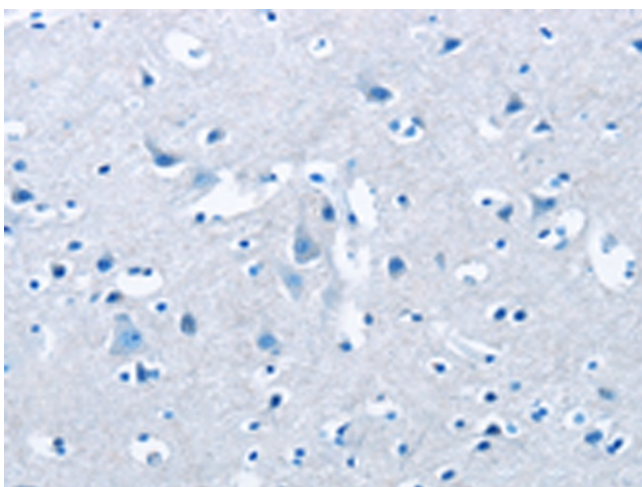
Immunohistochemistry of paraffin-embedded Human thyroid cancer tissue using [TA349521] (GAB1 Antibody) at dilution 1/40 (Original magnification:  $\times 200$ )



Immunohistochemistry of paraffin-embedded Human thyroid cancer tissue using [TA349521] (GAB1 Antibody) at dilution 1/40, treated with fusion protein. (Original magnification:  $\times 200$ )



Immunohistochemistry of paraffin-embedded Human brain tissue using [TA349521] (GAB1 Antibody) at dilution 1/40 (Original magnification: ×200)



Immunohistochemistry of paraffin-embedded Human brain tissue using [TA349521] (GAB1 Antibody) at dilution 1/40, treated with fusion protein. (Original magnification: ×200)