

Product datasheet for **TA349518S**

ARMCX3 Rabbit Polyclonal Antibody

Product data:

Product Type:	Primary Antibodies
Applications:	IHC, WB
Recommended Dilution:	WB: 200-1000 WB positive control: A172 and K562 cells, mouse pancreas tissue IHC: 50-200 Positive control: Human thyroid cancer Predicted cell location: Cytoplasm
Reactivity:	Human, Mouse, Rat
Host:	Rabbit
Isotype:	IgG
Clonality:	Polyclonal
Immunogen:	Fusion protein of human ARMCX3
Formulation:	pH7.4 PBS, 0.05% NaN ₃ , 40% Glycerol
Purification:	Antigen affinity purification
Conjugation:	Unconjugated
Storage:	Store at -20°C as received.
Stability:	Stable for 12 months from date of receipt.
Predicted Protein Size:	43 kDa
Gene Name:	armadillo repeat containing, X-linked 3
Database Link:	NP_808816 Entrez Gene 71703 Mouse Entrez Gene 367902 Rat Entrez Gene 51566 Human Q9UH62

Background: This gene encodes a member of the ALEX family of proteins which may play a role in tumor suppression. The encoded protein contains a potential N-terminal transmembrane domain and a single Armadillo (arm) repeat. Other proteins containing the arm repeat are involved in development, maintenance of tissue integrity, and tumorigenesis. This gene is closely localized with other family members on the X chromosome. Three transcript variants encoding the same protein have been identified for this gene.

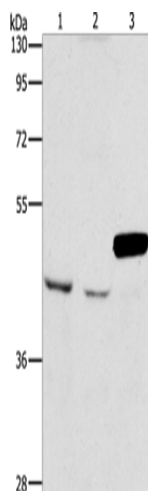


[View online »](#)

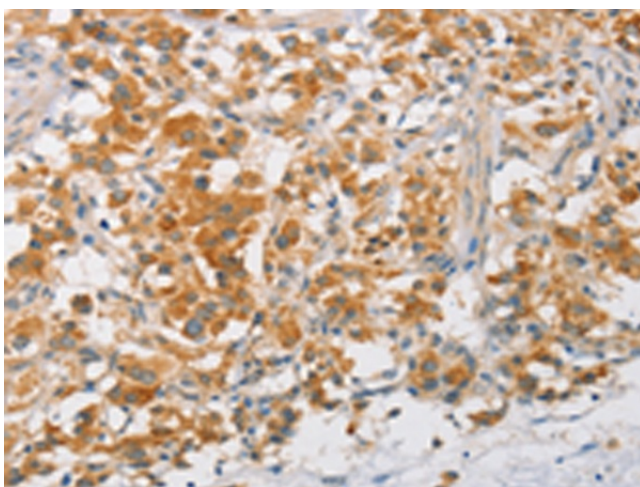
Synonyms: ALEX3; dj545K15.2; GASP6

Protein Families: Transmembrane

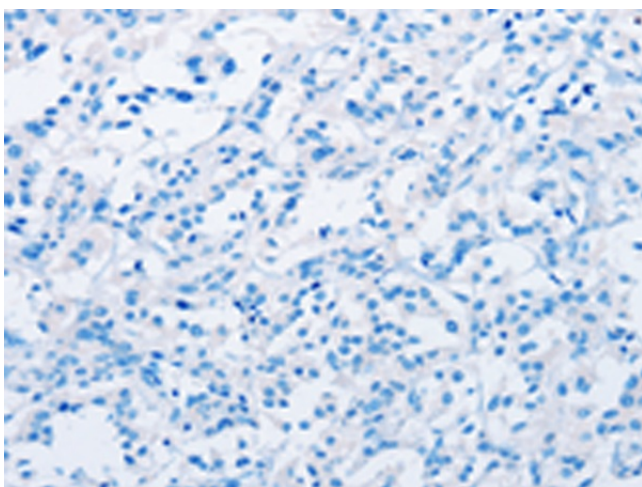
Product images:



Gel: 8%SDS-PAGE
Lysate: 40 µg
Lane 1-3: A172 cells
K562 cells
mouse pancreas tissue
Primary antibody: [TA349518] (ARMCX3 Antibody)
at dilution 1/900
Secondary antibody: Goat anti rabbit IgG at
1/8000 dilution
Exposure time: 30 seconds



Immunohistochemistry of paraffin-embedded
Human thyroid cancer tissue using [TA349518]
(ARMCX3 Antibody) at dilution 1/40 (Original
magnification: ×200)



Immunohistochemistry of paraffin-embedded Human thyroid cancer tissue using [TA349518] (ARMCX3 Antibody) at dilution 1/40, treated with fusion protein. (Original magnification: ×200)