

## Product datasheet for **TA349510S**

### ARHGEF7 Rabbit Polyclonal Antibody

#### Product data:

Product Type:	Primary Antibodies
Applications:	IHC, WB
Recommended Dilution:	WB: 500-2000 WB positive control: Human brain malignant glioma tissue, A172 and 293T cells IHC: 50-200 Positive control: Human gastric cancer Predicted cell location: Cytoplasm
Reactivity:	Human, Mouse, Rat
Host:	Rabbit
Isotype:	IgG
Clonality:	Polyclonal
Immunogen:	Fusion protein of human ARHGEF7
Formulation:	pH7.4 PBS, 0.05% NaN <sub>3</sub> , 40% Glycerol
Purification:	Antigen affinity purification
Conjugation:	Unconjugated
Storage:	Store at -20°C as received.
Stability:	Stable for 12 months from date of receipt.
Predicted Protein Size:	90 kDa
Gene Name:	Rho guanine nucleotide exchange factor 7
Database Link:	<a href="#">NP_663788</a> <a href="#">Entrez Gene 54126 MouseEntrez Gene 114559 RatEntrez Gene 8874 Human Q14155</a>



[View online »](#)

**Background:**

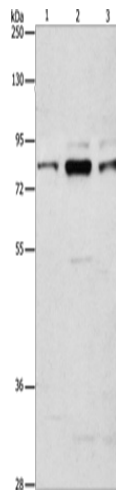
Rho GTPases play a fundamental role in numerous cellular processes triggered by extracellular stimuli that work through G protein coupled receptors. The encoded protein belongs to a family of cytoplasmic proteins that activate the Ras-like family of Rho proteins by exchanging bound GDP for GTP. It forms a complex with the small GTP binding protein Rac1 and recruits Rac1 to membrane ruffles and to focal adhesions. This protein can induce membrane ruffling. Multiple alternatively spliced transcript variants encoding different isoforms have been described for this gene.

**Synonyms:**

BETA-PIX; COOL-1; COOL1; Nbla10314; P50; P50BP; P85; P85COOL1; P85SPR; PAK3; PIXB

**Protein Pathways:**

Regulation of actin cytoskeleton

**Product images:**

Gel: 8%SDS-PAGE

Lysate: 40 µg

Lane 1-3: Human brain malignant glioma tissue

A172 cells

293T cells

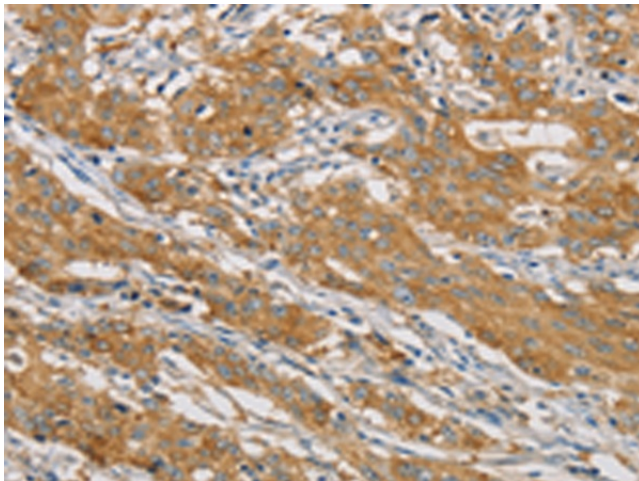
Primary antibody: [TA349510] (ARHGEF7

Antibody) at dilution 1/800

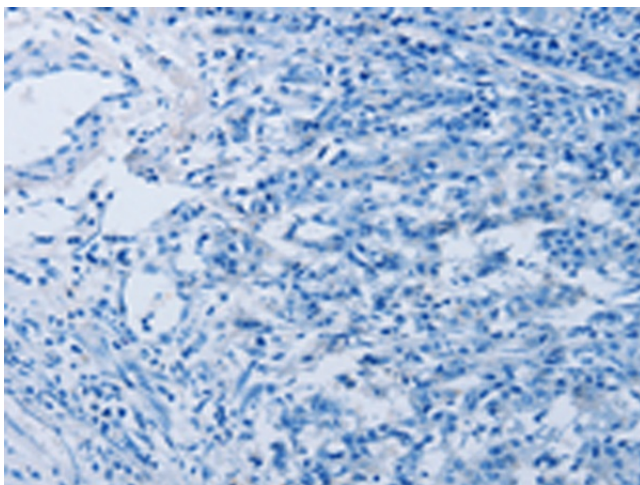
Secondary antibody: Goat anti rabbit IgG at

1/8000 dilution

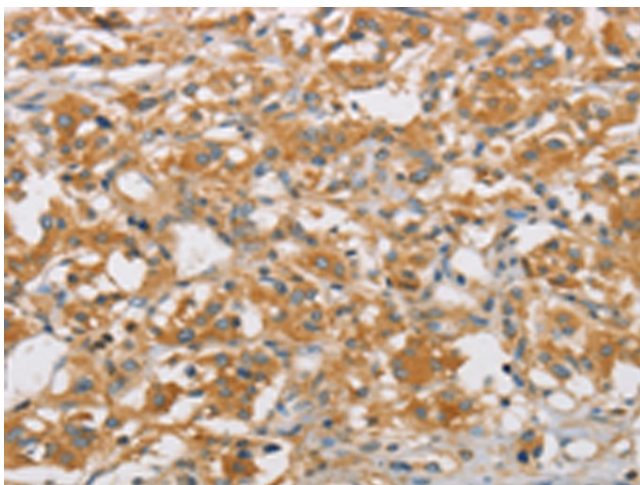
Exposure time: 3 minutes



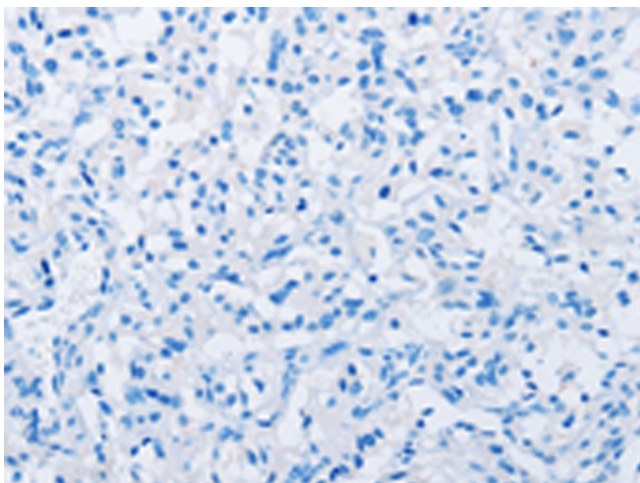
Immunohistochemistry of paraffin-embedded Human gastric cancer tissue using [TA349510] (ARHGEF7 Antibody) at dilution 1/40 (Original magnification: ×200)



Immunohistochemistry of paraffin-embedded Human gastric cancer tissue using [TA349510] (ARHGEF7 Antibody) at dilution 1/40, treated with fusion protein. (Original magnification: ×200)



Immunohistochemistry of paraffin-embedded Human thyroid cancer tissue using [TA349510] (ARHGEF7 Antibody) at dilution 1/40 (Original magnification: ×200)



Immunohistochemistry of paraffin-embedded Human thyroid cancer tissue using [TA349510] (ARHGEF7 Antibody) at dilution 1/40, treated with fusion protein. (Original magnification: ×200)