

Product datasheet for **TA349510**

ARHGEF7 Rabbit Polyclonal Antibody

Product data:

Product Type:	Primary Antibodies
Applications:	IHC, WB
Recommended Dilution:	WB: 500-2000 WB positive control: Human brain malignant glioma tissue, A172 and 293T cells IHC: 50-200 Positive control: Human gastric cancer Predicted cell location: Cytoplasm
Reactivity:	Human, Mouse, Rat
Host:	Rabbit
Isotype:	IgG
Clonality:	Polyclonal
Immunogen:	Fusion protein of human ARHGEF7
Formulation:	pH7.4 PBS, 0.05% NaN ₃ , 40% Glycerol
Concentration:	lot specific
Purification:	Antigen affinity purification
Conjugation:	Unconjugated
Storage:	Store at -20°C as received.
Stability:	Stable for 12 months from date of receipt.
Predicted Protein Size:	90 kDa
Gene Name:	Rho guanine nucleotide exchange factor 7
Database Link:	NP_663788 Entrez Gene 54126 Mouse Entrez Gene 114559 Rat Entrez Gene 8874 Human Q14155



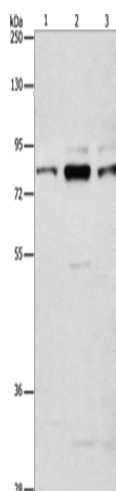
[View online »](#)

Background: Rho GTPases play a fundamental role in numerous cellular processes triggered by extracellular stimuli that work through G protein coupled receptors. The encoded protein belongs to a family of cytoplasmic proteins that activate the Ras-like family of Rho proteins by exchanging bound GDP for GTP. It forms a complex with the small GTP binding protein Rac1 and recruits Rac1 to membrane ruffles and to focal adhesions. This protein can induce membrane ruffling. Multiple alternatively spliced transcript variants encoding different isoforms have been described for this gene.

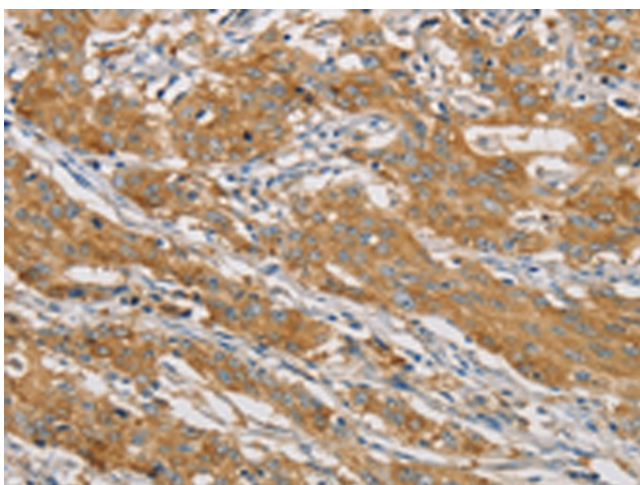
Synonyms: BETA-PIX; COOL-1; COOL1; Nbla10314; P50; P50BP; P85; P85COOL1; P85SPR; PAK3; PIXB

Protein Pathways: Regulation of actin cytoskeleton

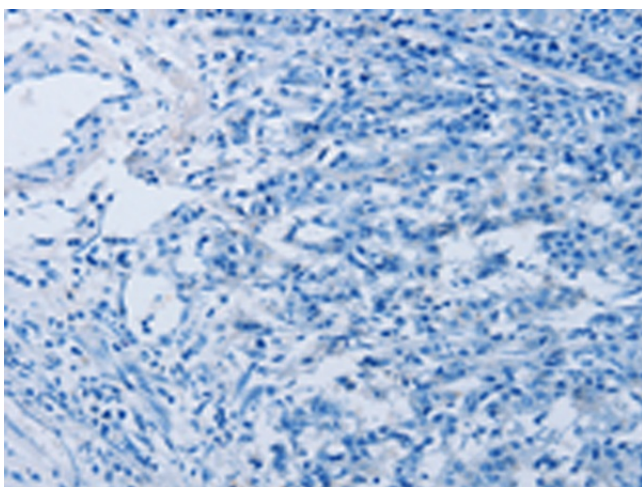
Product images:



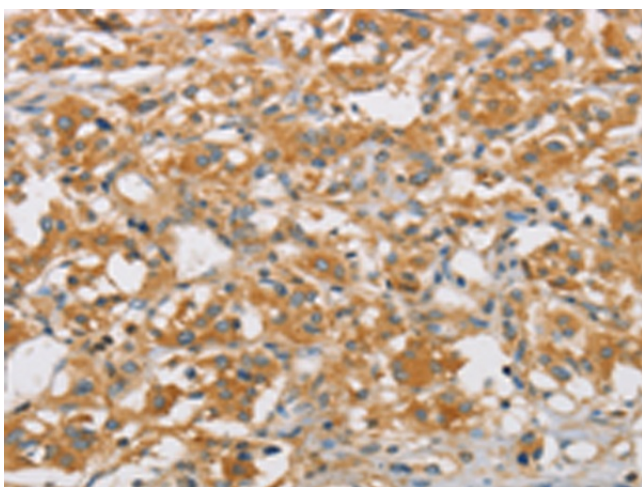
Gel: 8%SDS-PAGE
Lysate: 40 μ g
Lane 1-3: Human brain malignant glioma tissue
A172 cells
293T cells
Primary antibody: TA349510 (ARHGEF7 Antibody)
at dilution 1/800
Secondary antibody: Goat anti rabbit IgG at
1/8000 dilution
Exposure time: 3 minutes



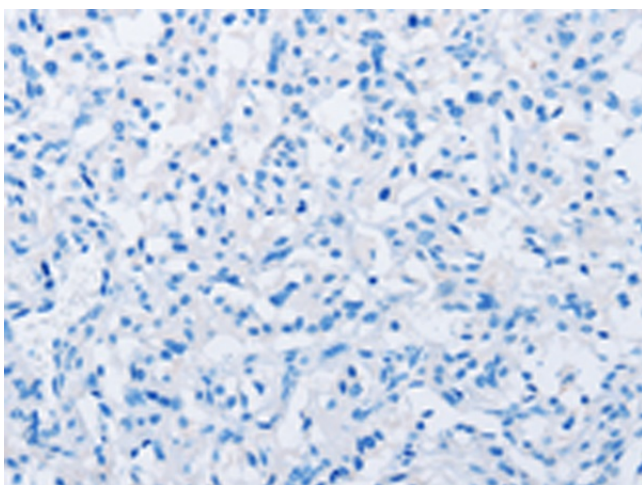
Immunohistochemistry of paraffin-embedded
Human gastric cancer tissue using TA349510
(ARHGEF7 Antibody) at dilution 1/40 (Original
magnification: \times 200)



Immunohistochemistry of paraffin-embedded Human gastric cancer tissue using TA349510 (ARHGEF7 Antibody) at dilution 1/40, treated with fusion protein. (Original magnification: $\times 200$)



Immunohistochemistry of paraffin-embedded Human thyroid cancer tissue using TA349510 (ARHGEF7 Antibody) at dilution 1/40 (Original magnification: $\times 200$)



Immunohistochemistry of paraffin-embedded Human thyroid cancer tissue using TA349510 (ARHGEF7 Antibody) at dilution 1/40, treated with fusion protein. (Original magnification: $\times 200$)