

## Product datasheet for **TA349508**

### ARHGEF10 Rabbit Polyclonal Antibody

#### Product data:

Product Type:	Primary Antibodies
Applications:	IHC
Recommended Dilution:	IHC: 50-200 Positive control: Human breast cancer Predicted cell location: Cytoplasm
Reactivity:	Human, Mouse
Host:	Rabbit
Isotype:	IgG
Clonality:	Polyclonal
Immunogen:	Fusion protein of human ARHGEF10
Formulation:	pH7.4 PBS, 0.05% NaN <sub>3</sub> , 40% Glycerol
Concentration:	lot specific
Purification:	Antigen affinity purification
Conjugation:	Unconjugated
Storage:	Store at -20°C as received.
Stability:	Stable for 12 months from date of receipt.
Gene Name:	Rho guanine nucleotide exchange factor 10
Database Link:	<a href="#">NP_055444</a> <a href="#">Entrez Gene 9639 Human</a> <a href="#">O15013</a>

**Background:** Rho GTPases play a fundamental role in numerous cellular processes that are initiated by extracellular stimuli that work through G protein coupled receptors. The encoded protein may form complex with G proteins and stimulate Rho-dependent signals. ARHGEF10 (rho guanine nucleotide exchange factor 10), also known as GEF10 or KIAA0294, is a 1,369 amino acid protein that contains one DBL-homology domain and is thought to play a role in myelination of peripheral nerves, specifically during development. ARHGEF10 is expressed as four alternatively spliced isoforms that are present at low levels in ovary, lung, testis and kidney, with considerably higher expression in the central and peripheral nervous systems.

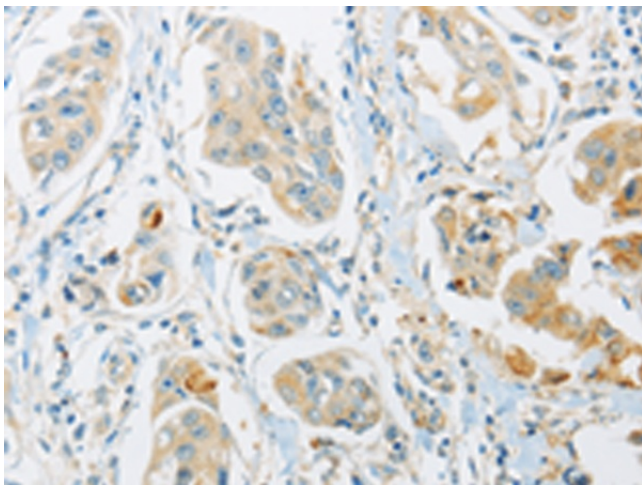


[View online »](#)

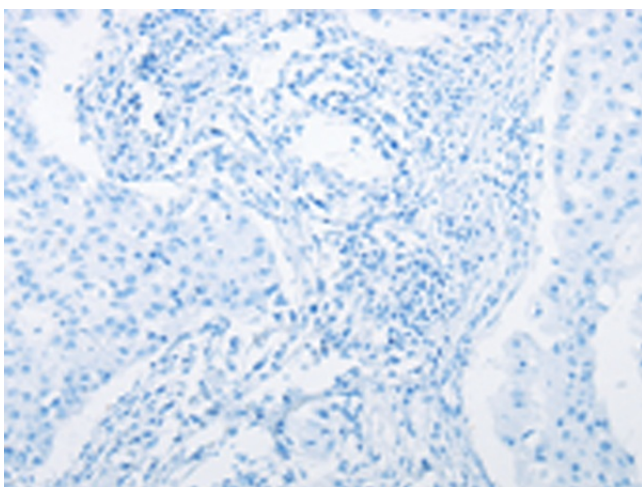
Synonyms: GEF10; SNCV

Protein Families: Druggable Genome

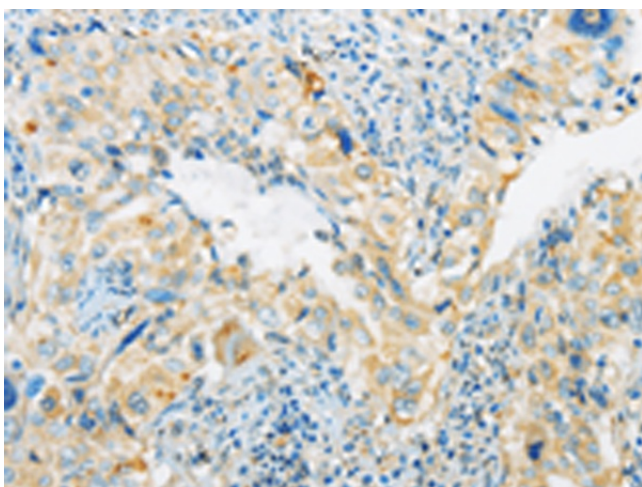
**Product images:**



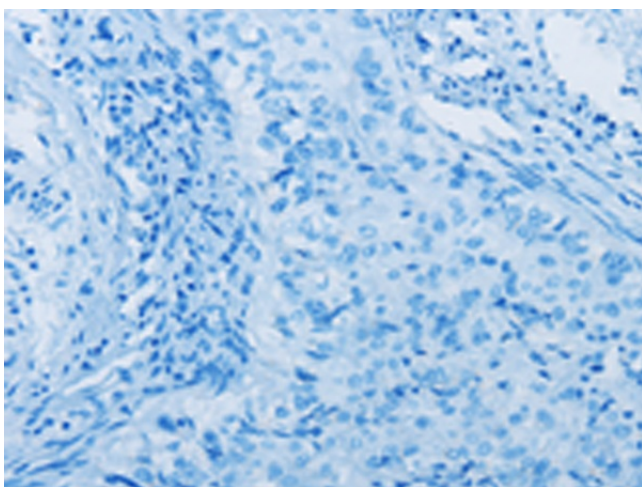
Immunohistochemistry of paraffin-embedded Human breast cancer tissue using TA349508 (ARHGEF10 Antibody) at dilution 1/45 (Original magnification:  $\times 200$ )



Immunohistochemistry of paraffin-embedded Human breast cancer tissue using TA349508 (ARHGEF10 Antibody) at dilution 1/45, treated with fusion protein. (Original magnification:  $\times 200$ )



Immunohistochemistry of paraffin-embedded Human cervical cancer tissue using TA349508 (ARHGEF10 Antibody) at dilution 1/45 (Original magnification:  $\times 200$ )



Immunohistochemistry of paraffin-embedded Human cervical cancer tissue using TA349508 (ARHGEF10 Antibody) at dilution 1/45, treated with fusion protein. (Original magnification:  $\times 200$ )