

## Product datasheet for **TA349506**

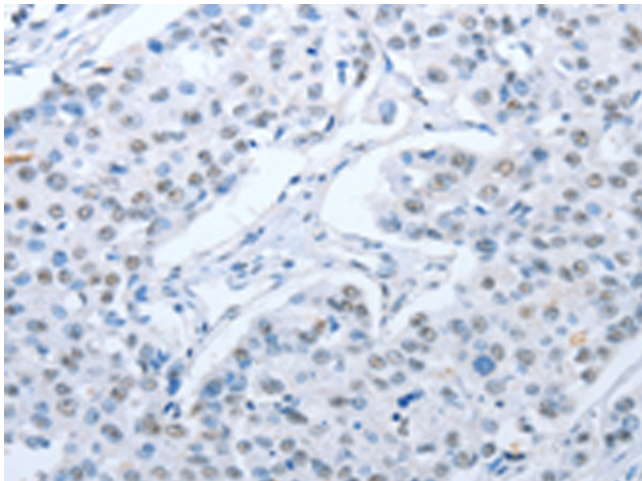
### GEF H1 (ARHGEF2) Rabbit Polyclonal Antibody

#### Product data:

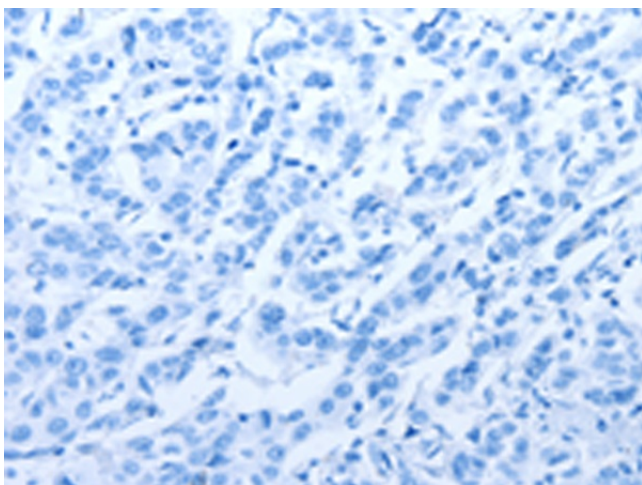
Product Type:	Primary Antibodies
Applications:	IHC
Recommended Dilution:	IHC: 25-100 Positive control: Human breast cancer Predicted cell location: Nucleus
Reactivity:	Human, Mouse, Rat
Host:	Rabbit
Isotype:	IgG
Clonality:	Polyclonal
Immunogen:	Fusion protein of human ARHGEF2
Formulation:	pH7.4 PBS, 0.05% NaN <sub>3</sub> , 40% Glycerol
Concentration:	lot specific
Purification:	Antigen affinity purification
Conjugation:	Unconjugated
Storage:	Store at -20°C as received.
Stability:	Stable for 12 months from date of receipt.
Gene Name:	Rho/Rac guanine nucleotide exchange factor 2
Database Link:	<a href="#">NP_004714</a> <a href="#">Entrez Gene 16800 Mouse</a> <a href="#">Entrez Gene 310635 Rat</a> <a href="#">Entrez Gene 9181 Human</a> <a href="#">Q92974</a>
Background:	Rho GTPases play a fundamental role in numerous cellular processes that are initiated by extracellular stimuli that work through G protein coupled receptors. The encoded protein may form complex with G proteins and stimulate rho-dependent signals. Alternatively spliced transcript variants encoding different isoforms have been identified.
Synonyms:	GEF; GEF-H1; GEFH1; LFP40; P40
Protein Families:	Druggable Genome
Protein Pathways:	Pathogenic Escherichia coli infection



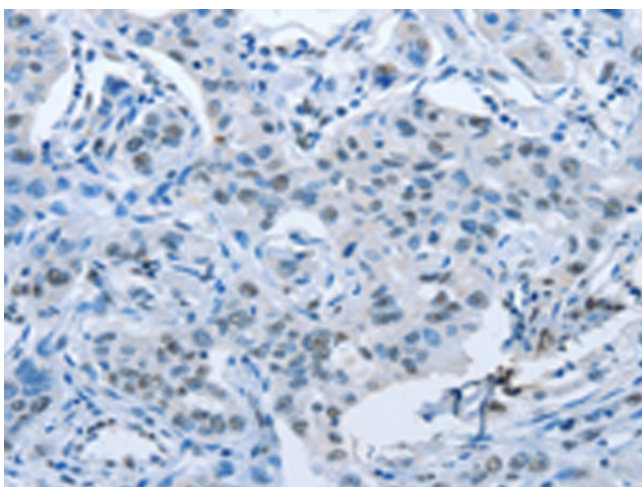
[View online »](#)

**Product images:**

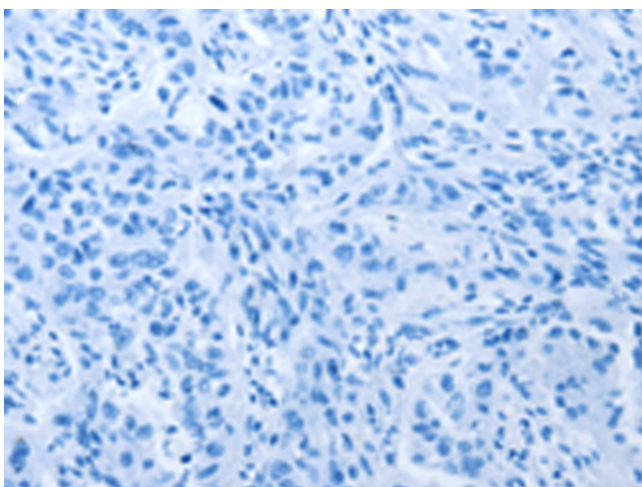
Immunohistochemistry of paraffin-embedded Human breast cancer tissue using TA349506 (ARHGEF2 Antibody) at dilution 1/30 (Original magnification:  $\times 200$ )



Immunohistochemistry of paraffin-embedded Human breast cancer tissue using TA349506 (ARHGEF2 Antibody) at dilution 1/30, treated with fusion protein. (Original magnification:  $\times 200$ )



Immunohistochemistry of paraffin-embedded Human lung cancer tissue using TA349506 (ARHGEF2 Antibody) at dilution 1/30 (Original magnification:  $\times 200$ )



Immunohistochemistry of paraffin-embedded Human lung cancer tissue using TA349506 (ARHGEF2 Antibody) at dilution 1/30, treated with fusion protein. (Original magnification:  $\times 200$ )