

## Product datasheet for **TA349502**

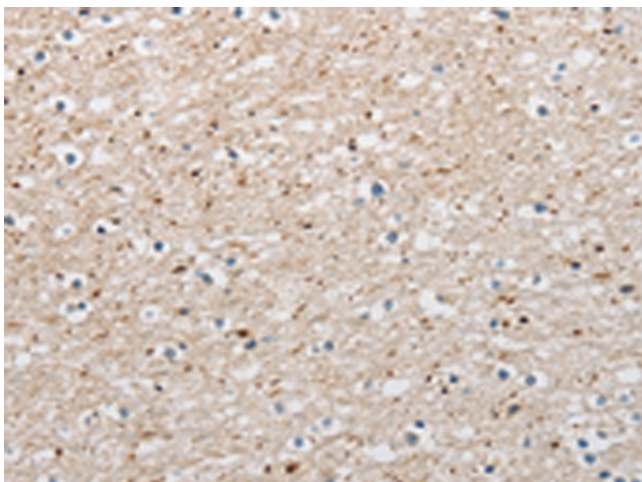
### ARHGAP1 Rabbit Polyclonal Antibody

#### Product data:

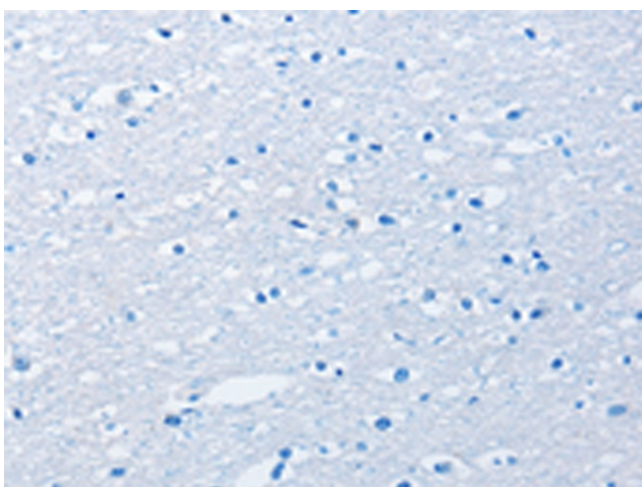
Product Type:	Primary Antibodies
Applications:	IHC
Recommended Dilution:	IHC: 15-50 Positive control: Human brain Predicted cell location: Cytoplasm
Reactivity:	Human, Mouse
Host:	Rabbit
Isotype:	IgG
Clonality:	Polyclonal
Immunogen:	Fusion protein of human ARHGAP1
Formulation:	pH7.4 PBS, 0.05% NaN <sub>3</sub> , 40% Glycerol
Concentration:	lot specific
Purification:	Antigen affinity purification
Conjugation:	Unconjugated
Storage:	Store at -20°C as received.
Stability:	Stable for 12 months from date of receipt.
Gene Name:	Rho GTPase activating protein 1
Database Link:	<a href="#">NP_004299</a> <a href="#">Entrez Gene 228359 Mouse</a> <a href="#">Entrez Gene 392 Human</a> <a href="#">Q07960</a>
Background:	This gene encodes a member of a large family of proteins that activate Rho-type guanosine triphosphate (GTP) metabolizing enzymes. The encoded protein contains a SRC homology 3 domain and interacts with Bcl-2-associated protein family members. GTPase activator for the Rho, Rac and Cdc42 proteins, converting them to the putatively inactive GDP-bound state. Cdc42 seems to be the preferred substrate.
Synonyms:	CDC42GAP; p50rhoGAP; RHOGAP; RHOGAP1



[View online »](#)

**Product images:**

Immunohistochemistry of paraffin-embedded Human brain tissue using TA349502 (ARHGAP1 Antibody) at dilution 1/25 (Original magnification: ×200)



Immunohistochemistry of paraffin-embedded Human brain tissue using TA349502 (ARHGAP1 Antibody) at dilution 1/25, treated with fusion protein. (Original magnification: ×200)