

Product datasheet for **TA349499S**

ARFGAP1 Rabbit Polyclonal Antibody

Product data:

Product Type:	Primary Antibodies
Applications:	IHC, WB
Recommended Dilution:	WB: 1000-5000 WB positive control: 293T, A549, PC3 and NIH/3T3 cells IHC: 25-100 Positive control: Human lung cancer Predicted cell location: Cytoplasm
Reactivity:	Human, Mouse
Host:	Rabbit
Isotype:	IgG
Clonality:	Polyclonal
Immunogen:	Fusion protein of human ARFGAP1
Formulation:	pH7.4 PBS, 0.05% NaN ₃ , 40% Glycerol
Purification:	Antigen affinity purification
Conjugation:	Unconjugated
Storage:	Store at -20°C as received.
Stability:	Stable for 12 months from date of receipt.
Predicted Protein Size:	45 kDa
Gene Name:	ADP ribosylation factor GTPase activating protein 1
Database Link:	NP_783202 Entrez Gene 228998 Mouse Entrez Gene 55738 Human Q8N6T3



[View online »](#)

Background:

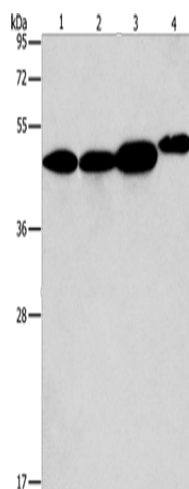
The protein encoded by this gene is a GTPase-activating protein (GAP) which associates with the Golgi apparatus and which interacts with ADP-ribosylation factor 1 (ARF1). The encoded protein promotes hydrolysis of ARF1-bound GTP and is required for the dissociation of coat proteins from Golgi-derived membranes and vesicles. Dissociation of the coat proteins is required for the fusion of these vesicles with target compartments. The activity of this protein is stimulated by phosphoinositides and inhibited by phosphatidylcholine. Two transcript variants encoding different isoforms have been found for this gene.

Synonyms:

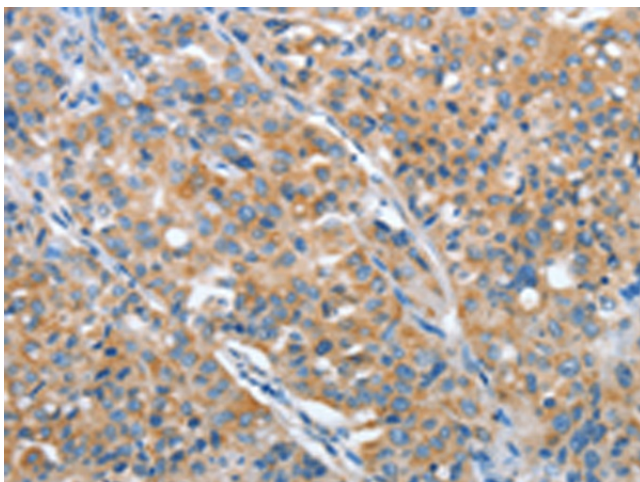
ARF1GAP; HRIHFB2281

Protein Pathways:

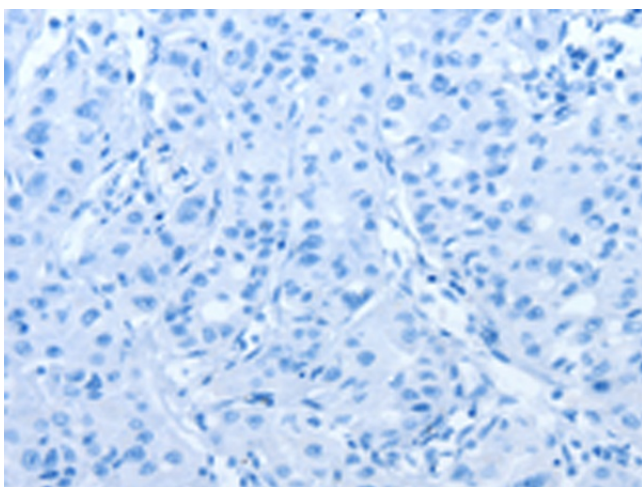
Endocytosis

Product images:


Gel: 10%SDS-PAGE
 Lysate: 40 µg
 Lane 1-4: 293T cells
 A549 cells
 PC3 cells
 NIH/3T3 cells
 Primary antibody: [TA349499] (ARFGAP1 Antibody) at dilution 1/600
 Secondary antibody: Goat anti rabbit IgG at 1/8000 dilution
 Exposure time: 10 seconds



Immunohistochemistry of paraffin-embedded Human lung cancer tissue using [TA349499] (ARFGAP1 Antibody) at dilution 1/30 (Original magnification: ×200)



Immunohistochemistry of paraffin-embedded Human lung cancer tissue using [TA349499] (ARFGAP1 Antibody) at dilution 1/30, treated with fusion protein. (Original magnification: $\times 200$)