

## Product datasheet for **TA349493S**

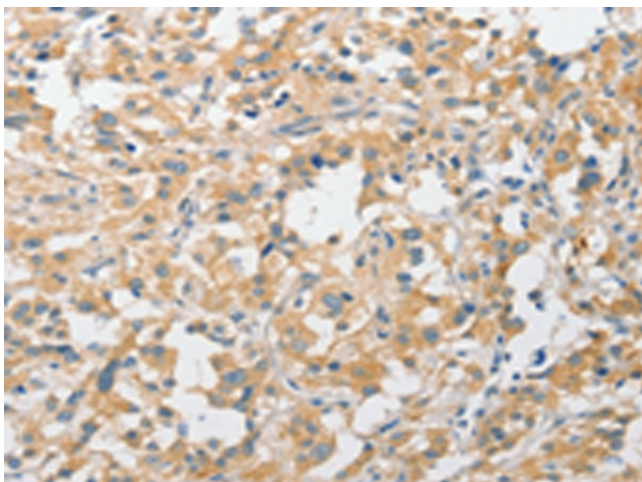
### APPBP2 Rabbit Polyclonal Antibody

#### Product data:

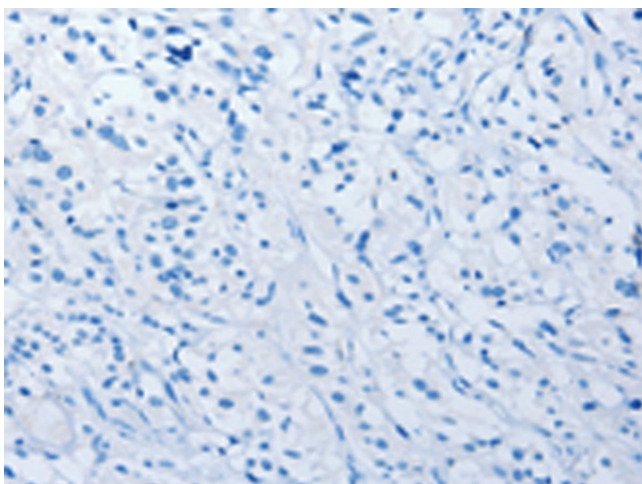
Product Type:	Primary Antibodies
Applications:	IHC
Recommended Dilution:	IHC: 25-100 Positive control: Human thyroid cancer Predicted cell location: Cytoplasm
Reactivity:	Human, Mouse, Rat
Host:	Rabbit
Isotype:	IgG
Clonality:	Polyclonal
Immunogen:	Fusion protein of human APPBP2
Formulation:	pH7.4 PBS, 0.05% NaN3, 40% GlycerolIn
Purification:	Antigen affinity purification
Conjugation:	Unconjugated
Storage:	Store at -20°C as received.
Stability:	Stable for 12 months from date of receipt.
Gene Name:	amyloid beta precursor protein binding protein 2
Database Link:	<a href="#">NP_006371</a> <a href="#">Entrez Gene 66884 Mouse</a> <a href="#">Entrez Gene 303396 Rat</a> <a href="#">Entrez Gene 10513 Human</a> <a href="#">Q92624</a>
Background:	The protein encoded by this gene interacts with microtubules and is functionally associated with beta-amyloid precursor protein transport and/or processing. The beta-amyloid precursor protein is a cell surface protein with signal-transducing properties, and it is thought to play a role in the pathogenesis of Alzheimer's disease. The encoded protein may be involved in regulating cell death. This gene has been found to be highly expressed in breast cancer. Alternative splicing results in multiple transcript variants.
Synonyms:	APP-BP2; HS.84084; PAT1
Protein Families:	Druggable Genome



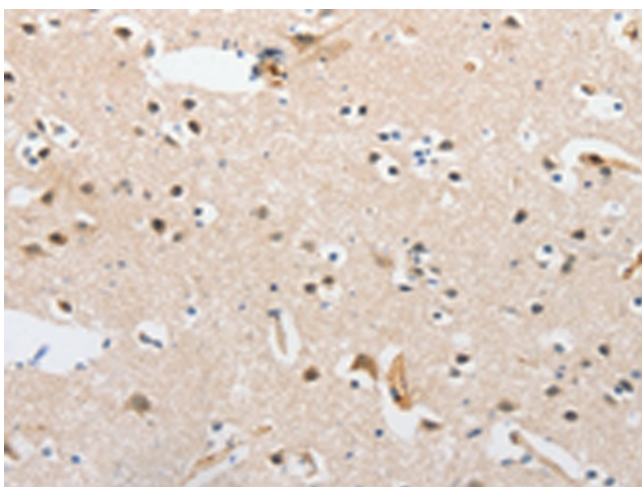
[View online »](#)

**Product images:**

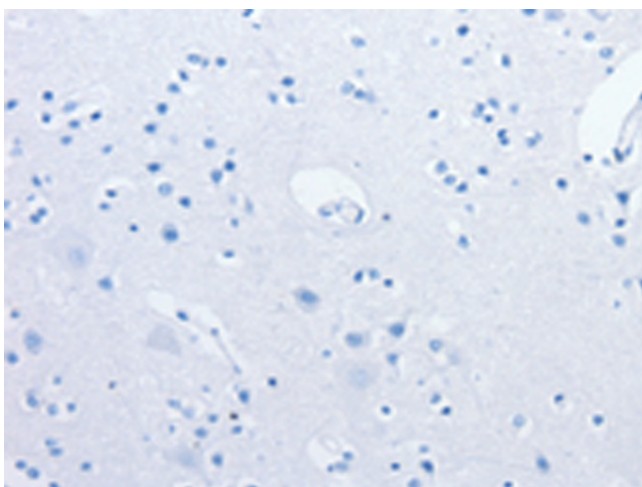
Immunohistochemistry of paraffin-embedded Human thyroid cancer tissue using [TA349493] (APPBP2 Antibody) at dilution 1/30 (Original magnification:  $\times 200$ )



Immunohistochemistry of paraffin-embedded Human thyroid cancer tissue using [TA349493] (APPBP2 Antibody) at dilution 1/30, treated with fusion protein. (Original magnification:  $\times 200$ )



Immunohistochemistry of paraffin-embedded Human brain tissue using [TA349493] (APPBP2 Antibody) at dilution 1/30 (Original magnification: ×200)



Immunohistochemistry of paraffin-embedded Human brain tissue using [TA349493] (APPBP2 Antibody) at dilution 1/30, treated with fusion protein. (Original magnification: ×200)