

## Product datasheet for **TA349492**

### APPBP1 (NAE1) Rabbit Polyclonal Antibody

#### Product data:

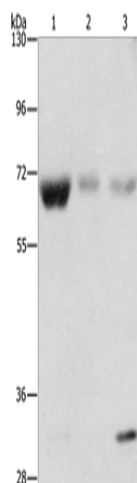
Product Type:	Primary Antibodies
Applications:	WB
Recommended Dilution:	WB: 200-1000 WB positive control: Human fetal muscle, kidney and liver tissue
Reactivity:	Human, Mouse, Rat
Host:	Rabbit
Isotype:	IgG
Clonality:	Polyclonal
Immunogen:	Fusion protein of human NAE1
Formulation:	pH7.4 PBS, 0.05% NaN <sub>3</sub> , 40% Glycerol
Concentration:	lot specific
Purification:	Antigen affinity purification
Conjugation:	Unconjugated
Storage:	Store at -20°C as received.
Stability:	Stable for 12 months from date of receipt.
Predicted Protein Size:	60 kDa
Gene Name:	NEDD8 activating enzyme E1 subunit 1
Database Link:	<a href="#">NP_003896</a> <a href="#">Entrez Gene 84019 Rat</a> <a href="#">Entrez Gene 234664 Mouse</a> <a href="#">Entrez Gene 8883 Human</a> <a href="#">Q13564</a>
Background:	The protein encoded by this gene binds to the beta-amyloid precursor protein. Beta-amyloid precursor protein is a cell surface protein with signal-transducing properties, and it is thought to play a role in the pathogenesis of Alzheimer's disease. In addition, the encoded protein can form a heterodimer with UBE1C and bind and activate NEDD8, a ubiquitin-like protein. This protein is required for cell cycle progression through the S/M checkpoint. Three transcript variants encoding different isoforms have been found for this gene.
Synonyms:	A-116A10.1; APPBP1; HPP1; ula-1



[View online »](#)

Protein Pathways: Alzheimer's disease

### Product images:



Gel: 8%SDS-PAGE

Lysate: 40 µg

Lane 1-3: Human fetal muscle tissue

Human kidney tissue

Human liver tissue

Primary antibody: TA349492 (NAE1 Antibody) at dilution 1/500

Secondary antibody: Goat anti rabbit IgG at 1/8000 dilution

Exposure time: 1 minute