

Product datasheet for **TA349489S**

APOBEC3G Rabbit Polyclonal Antibody

Product data:

Product Type:	Primary Antibodies
Applications:	IHC, WB
Recommended Dilution:	WB: 200-1000 WB positive control: PC3, Jurkat and Raji cells IHC: 25-100 Positive control: Human thyroid cancer Predicted cell location: Cytoplasm
Reactivity:	Human
Host:	Rabbit
Isotype:	IgG
Clonality:	Polyclonal
Immunogen:	Fusion protein of human APOBEC3G
Formulation:	pH7.4 PBS, 0.05% NaN ₃ , 40% Glycerol
Purification:	Antigen affinity purification
Conjugation:	Unconjugated
Storage:	Store at -20°C as received.
Stability:	Stable for 12 months from date of receipt.
Predicted Protein Size:	46 kDa
Gene Name:	apolipoprotein B mRNA editing enzyme catalytic subunit 3G
Database Link:	NP_068594 Entrez Gene 60489 Human Q9HC16



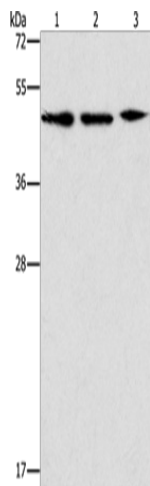
[View online »](#)

Background:

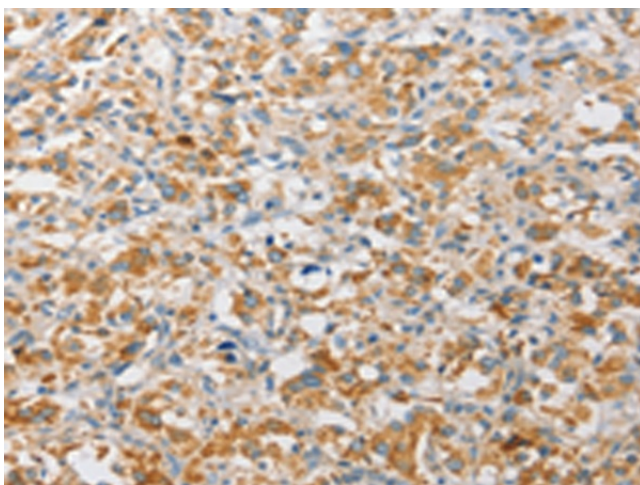
This gene is a member of the cytidine deaminase gene family. It is one of seven related genes or pseudogenes found in a cluster, thought to result from gene duplication, on chromosome 22. Members of the cluster encode proteins that are structurally and functionally related to the C to U RNA-editing cytidine deaminase APOBEC1. It is thought that the proteins may be RNA editing enzymes and have roles in growth or cell cycle control. The protein encoded by this gene has been found to be a specific inhibitor of human immunodeficiency virus-1 (HIV-1) infectivity.

Synonyms:

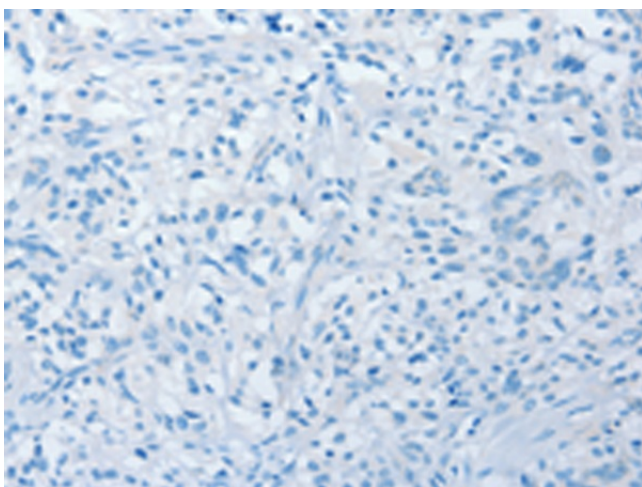
A3G; ARCD; ARP-9; ARP9; bK150C2.7; CEM-15; CEM15; dj494G10.1; MDS019

Product images:

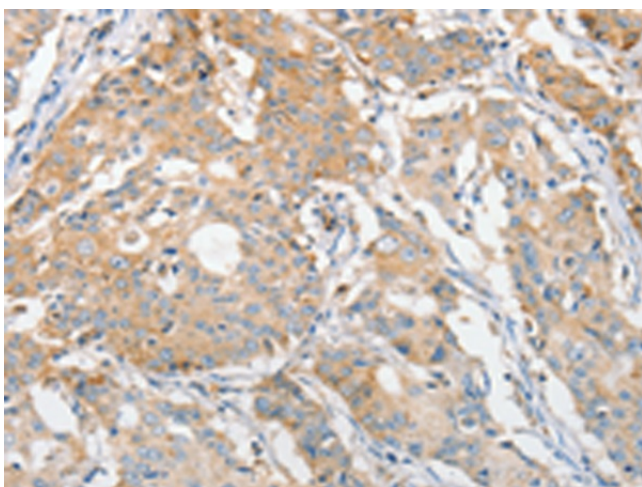
Gel: 12%SDS-PAGE
Lysate: 40 µg
Lane 1-3: PC3 cells
Jurkat cells
Raji cells
Primary antibody: [TA349489] (APOBEC3G Antibody) at dilution 1/240
Secondary antibody: Goat anti rabbit IgG at 1/8000 dilution
Exposure time: 30 seconds



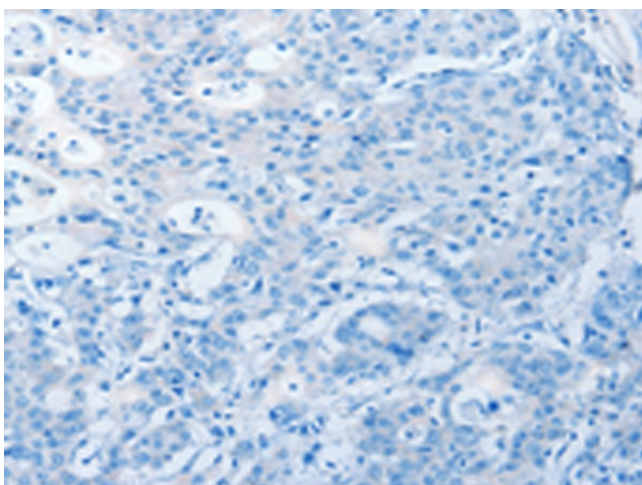
Immunohistochemistry of paraffin-embedded Human thyroid cancer tissue using [TA349489] (APOBEC3G Antibody) at dilution 1/30 (Original magnification: ×200)



Immunohistochemistry of paraffin-embedded Human thyroid cancer tissue using [TA349489] (APOBEC3G Antibody) at dilution 1/30, treated with fusion protein. (Original magnification: $\times 200$)



Immunohistochemistry of paraffin-embedded Human gastric cancer tissue using [TA349489] (APOBEC3G Antibody) at dilution 1/30 (Original magnification: $\times 200$)



Immunohistochemistry of paraffin-embedded Human gastric cancer tissue using [TA349489] (APOBEC3G Antibody) at dilution 1/30, treated with fusion protein. (Original magnification: $\times 200$)