

## Product datasheet for **TA349488S**

### APOBEC4 Rabbit Polyclonal Antibody

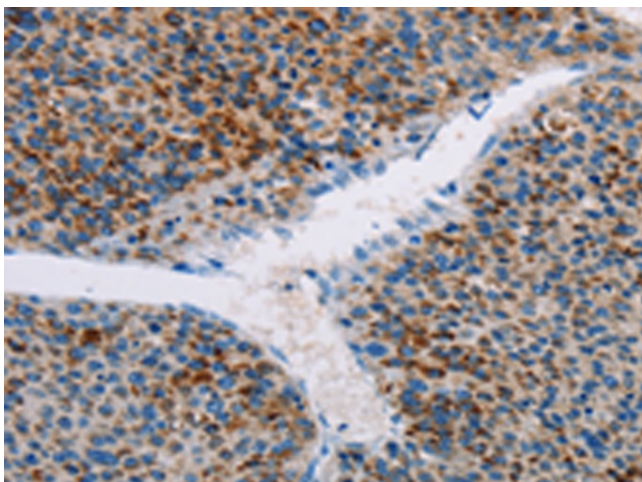
#### Product data:

Product Type:	Primary Antibodies
Applications:	IHC
Recommended Dilution:	IHC: 25-100 Positive control: Human liver cancer Predicted cell location: Cytoplasm
Reactivity:	Human
Host:	Rabbit
Isotype:	IgG
Clonality:	Polyclonal
Immunogen:	Fusion protein of human APOBEC4
Formulation:	pH7.4 PBS, 0.05% NaN <sub>3</sub> , 40% Glycerol
Purification:	Antigen affinity purification
Conjugation:	Unconjugated
Storage:	Store at -20°C as received.
Stability:	Stable for 12 months from date of receipt.
Gene Name:	apolipoprotein B mRNA editing enzyme catalytic polypeptide like 4
Database Link:	<a href="#">NP_982279</a> <a href="#">Entrez Gene 403314 Human</a> <a href="#">Q8WW27</a>
Background:	This gene encodes a member of the AID/APOBEC family of polynucleotide (deoxy)cytidine deaminases, which convert cytidine to uridine. Other AID/APOBEC family members are involved in mRNA editing, somatic hypermutation and recombination of immunoglobulin genes, and innate immunity to retroviral infection.
Synonyms:	C1orf169

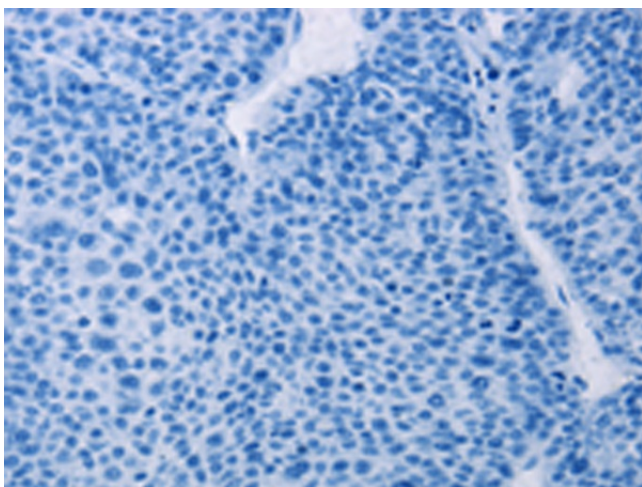


[View online »](#)

## Product images:



Immunohistochemistry of paraffin-embedded Human liver cancer tissue using [TA349488] (APOBEC4 Antibody) at dilution 1/20 (Original magnification: ×200)



Immunohistochemistry of paraffin-embedded Human liver cancer tissue using [TA349488] (APOBEC4 Antibody) at dilution 1/20, treated with fusion protein. (Original magnification: ×200)