

Product datasheet for **TA349487**

Apolipoprotein M (APOM) Rabbit Polyclonal Antibody

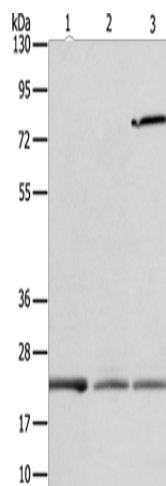
Product data:

Product Type:	Primary Antibodies
Applications:	WB
Recommended Dilution:	WB: 200-1000 WB positive control: Human fetal liver and liver cancer tissue, human placenta tissue
Reactivity:	Human, Mouse, Rat
Host:	Rabbit
Isotype:	IgG
Clonality:	Polyclonal
Immunogen:	Fusion protein of human APOM
Formulation:	pH7.4 PBS, 0.05% NaN ₃ , 40% Glycerol
Concentration:	lot specific
Purification:	Antigen affinity purification
Conjugation:	Unconjugated
Storage:	Store at -20°C as received.
Stability:	Stable for 12 months from date of receipt.
Predicted Protein Size:	21 kDa
Gene Name:	apolipoprotein M
Database Link:	NP_061974 Entrez Gene 55938 MouseEntrez Gene 55939 RatEntrez Gene 55937 Human O95445
Background:	The protein encoded by this gene is an apolipoprotein and member of the lipocalin protein family. It is found associated with high density lipoproteins and to a lesser extent with low density lipoproteins and triglyceride-rich lipoproteins. The encoded protein is secreted through the plasma membrane but remains membrane-bound, where it is involved in lipid transport. Alternate splicing results in both coding and non-coding variants of this gene.
Synonyms:	apo-M; G3a; HSPC336; NG20
Protein Families:	Secreted Protein



[View online »](#)

Product images:



Gel: 12+15%SDS-PAGE

Lysate: 40 μ g

Lane 1-3: Human fetal liver tissue

Human liver cancer tissue

human placenta tissue

Primary antibody: TA349487 (APOM Antibody) at dilution 1/300

Secondary antibody: Goat anti rabbit IgG at 1/8000 dilution

Exposure time: 1 minute