

## Product datasheet for **TA349482**

### ATG5 Rabbit Polyclonal Antibody

#### Product data:

Product Type:	Primary Antibodies
Applications:	IHC, WB
Recommended Dilution:	WB: 500-2000 WB positive control: NIH/3T3 and A172 cells IHC: 50-200 Positive control: Human thyroid cancer Predicted cell location: Cytoplasm
Reactivity:	Human, Mouse, Rat
Host:	Rabbit
Isotype:	IgG
Clonality:	Polyclonal
Immunogen:	Fusion protein of human ATG5
Formulation:	pH7.4 PBS, 0.05% NaN <sub>3</sub> , 40% Glycerol
Concentration:	lot specific
Purification:	Antigen affinity purification
Conjugation:	Unconjugated
Storage:	Store at -20°C as received.
Stability:	Stable for 12 months from date of receipt.
Predicted Protein Size:	32 kDa
Gene Name:	autophagy related 5
Database Link:	<a href="#">NP_004840</a> <a href="#">Entrez Gene 11793 Mouse</a> <a href="#">Entrez Gene 365601 Rat</a> <a href="#">Entrez Gene 9474 Human</a> <a href="#">Q9H1Y0</a>
Background:	Autophagy protein 5 is a protein that in humans is encoded by the ATG5 gene. It is an E3 ubiquitin ligase which is necessary for autophagy due to its role in autophagosome elongation. It is activated by ATG7 and forms a complex with ATG12 and ATG16L1. This complex is necessary for LC3-1 conjugation to PE to form LC3-II.
Synonyms:	APG5; APG5-LIKE; APG5L; ASP; hAPG5

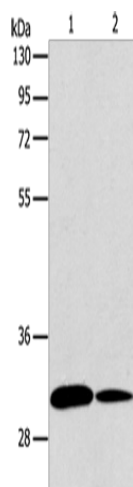


[View online »](#)

Protein Families: Druggable Genome

Protein Pathways: Regulation of autophagy, RIG-I-like receptor signaling pathway

### Product images:



Gel: 12%SDS-PAGE

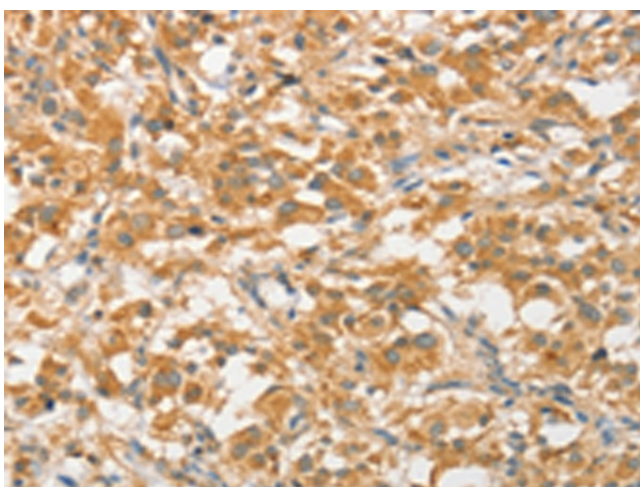
Lysate: 40 µg

Lane 1-2: NIH/3T3 cells  
A172 cells

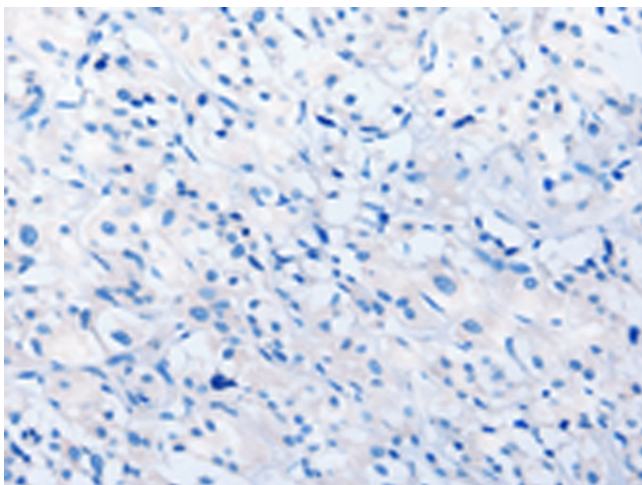
Primary antibody: TA349482 (ATG5 Antibody) at  
dilution 1/475

Secondary antibody: Goat anti rabbit IgG at  
1/8000 dilution

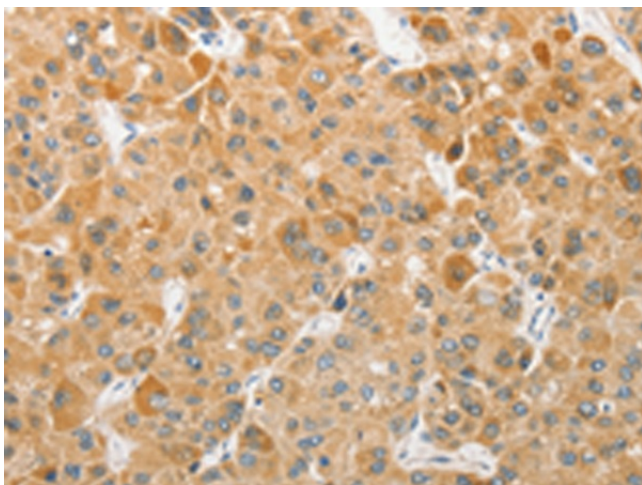
Exposure time: 20 seconds



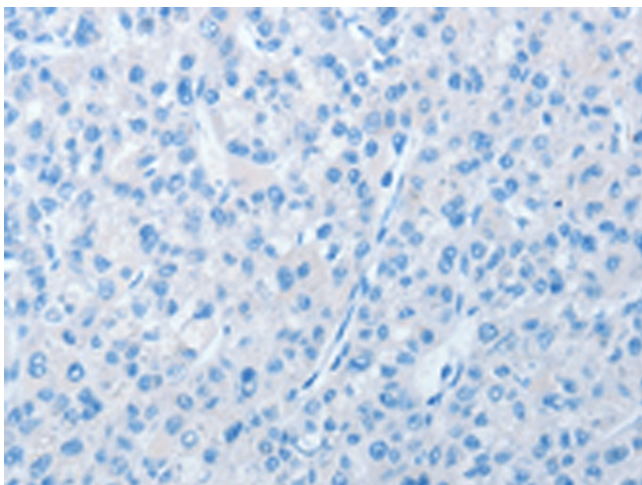
Immunohistochemistry of paraffin-embedded  
Human thyroid cancer tissue using TA349482  
(ATG5 Antibody) at dilution 1/40 (Original  
magnification: ×200)



Immunohistochemistry of paraffin-embedded Human thyroid cancer tissue using TA349482 (ATG5 Antibody) at dilution 1/40, treated with fusion protein. (Original magnification:  $\times 200$ )



Immunohistochemistry of paraffin-embedded Human liver cancer tissue using TA349482 (ATG5 Antibody) at dilution 1/40 (Original magnification:  $\times 200$ )



Immunohistochemistry of paraffin-embedded Human liver cancer tissue using TA349482 (ATG5 Antibody) at dilution 1/40, treated with fusion protein. (Original magnification:  $\times 200$ )