

Product datasheet for **TA349481**

Apg3 (ATG3) Rabbit Polyclonal Antibody

Product data:

Product Type:	Primary Antibodies
Applications:	IHC, WB
Recommended Dilution:	WB: 500-2000 WB positive control: K562 cells, mouse kidney tissue and Raji cells IHC: 25-100 Positive control: Human liver cancer Predicted cell location: Cytoplasm
Reactivity:	Human, Mouse, Rat
Host:	Rabbit
Isotype:	IgG
Clonality:	Polyclonal
Immunogen:	Fusion protein of human ATG3
Formulation:	pH7.4 PBS, 0.05% NaN ₃ , 40% Glycerol
Concentration:	lot specific
Purification:	Antigen affinity purification
Conjugation:	Unconjugated
Storage:	Store at -20°C as received.
Stability:	Stable for 12 months from date of receipt.
Predicted Protein Size:	36 kDa
Gene Name:	autophagy related 3
Database Link:	NP_071933 Entrez Gene 67841 Mouse Entrez Gene 171415 Rat Entrez Gene 64422 Human Q9NT62

Background: This gene encodes a ubiquitin-like-conjugating enzyme and is a component of ubiquitination-like systems involved in autophagy, the process of degradation, turnover and recycling of cytoplasmic constituents in eukaryotic cells. This protein is known to play a role in regulation of autophagy during cell death. A pseudogene of this gene is located on chromosome 20. Alternative splicing results in multiple transcript variants encoding different isoforms.

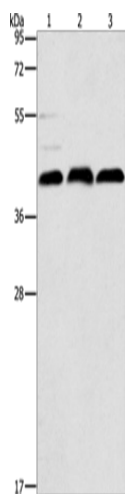


[View online »](#)

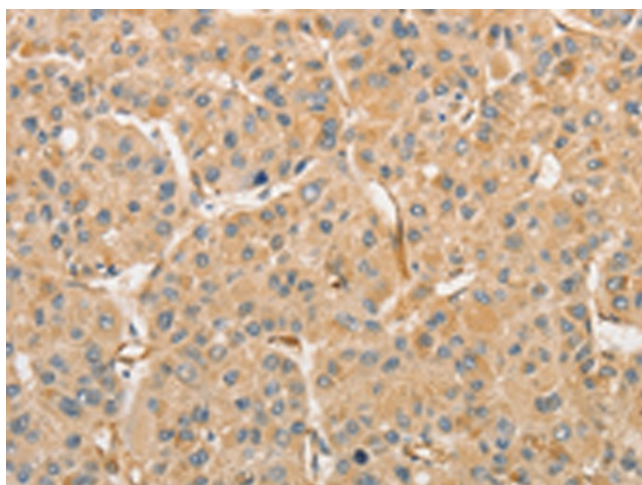
Synonyms: APG3; APG3-LIKE; APG3L; PC3-96

Protein Pathways: Regulation of autophagy

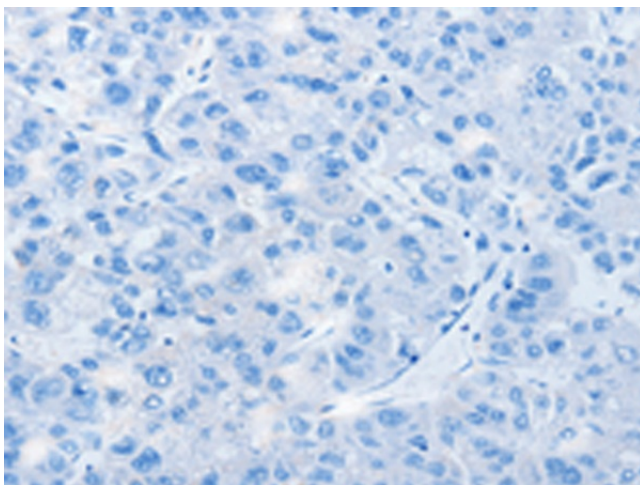
Product images:



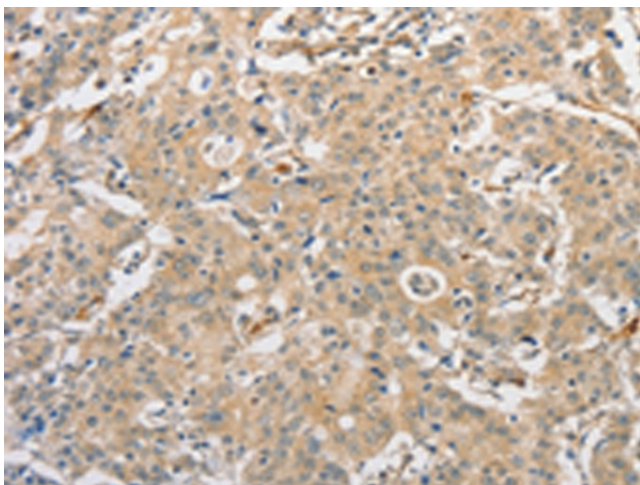
Gel: 12%SDS-PAGE
 Lysate: 40 µg
 Lane 1-3: K562 cells
 mouse kidney tissue
 Raji cells
 Primary antibody: TA349481 (ATG3 Antibody) at dilution 1/325
 Secondary antibody: Goat anti rabbit IgG at 1/8000 dilution
 Exposure time: 10 seconds



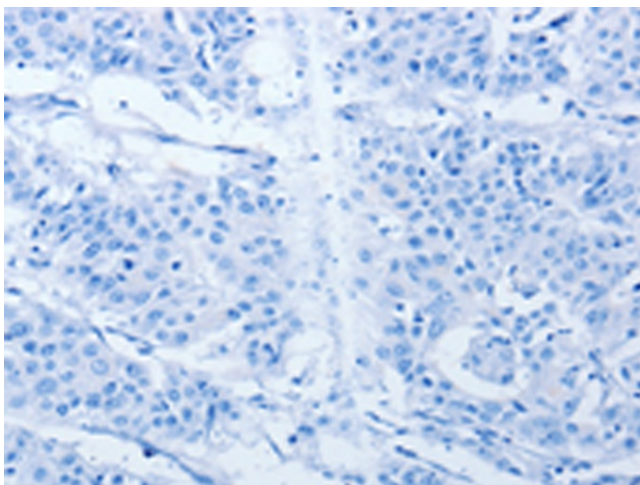
Immunohistochemistry of paraffin-embedded Human liver cancer tissue using TA349481 (ATG3 Antibody) at dilution 1/30 (Original magnification: ×200)



Immunohistochemistry of paraffin-embedded Human liver cancer tissue using TA349481 (ATG3 Antibody) at dilution 1/30, treated with fusion protein. (Original magnification: x200)



Immunohistochemistry of paraffin-embedded Human gastric cancer tissue using TA349481 (ATG3 Antibody) at dilution 1/30 (Original magnification: x200)



Immunohistochemistry of paraffin-embedded Human gastric cancer tissue using TA349481 (ATG3 Antibody) at dilution 1/30, treated with fusion protein. (Original magnification: x200)