

## Product datasheet for **TA349480**

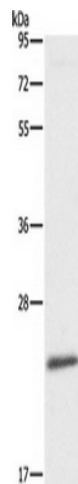
### Apg10 (ATG10) Rabbit Polyclonal Antibody

#### Product data:

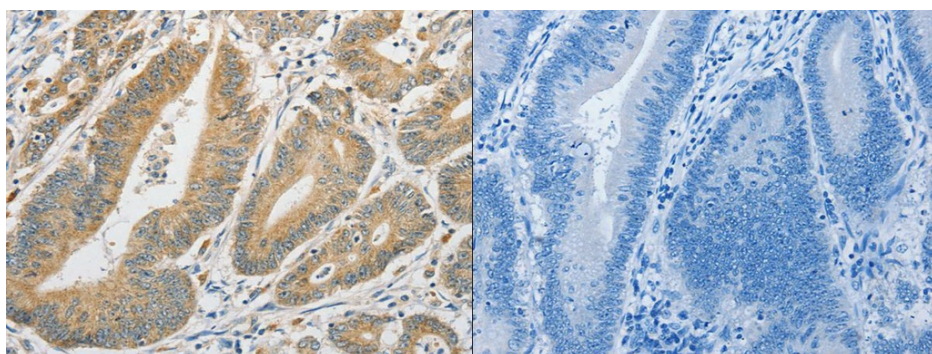
Product Type:	Primary Antibodies
Applications:	IHC, WB
Recommended Dilution:	ELISA: 1000-2000, WB: 200-1000, IHC: 50-200
Reactivity:	Human, Mouse
Host:	Rabbit
Isotype:	IgG
Clonality:	Polyclonal
Immunogen:	Fusion protein of human ATG10
Formulation:	pH7.4 PBS, 0.05% NaN <sub>3</sub> , 40% Glycerol
Concentration:	lot specific
Purification:	Antigen affinity purification
Conjugation:	Unconjugated
Storage:	Store at -20°C as received.
Stability:	Stable for 12 months from date of receipt.
Predicted Protein Size:	25 kDa
Gene Name:	autophagy related 10
Database Link:	<a href="#">NP_113670</a> <a href="#">Entrez Gene 66795 Mouse</a> <a href="#">Entrez Gene 83734 Human</a> <a href="#">Q9H0Y0</a>
Background:	Autophagy is a process for the bulk degradation of cytosolic compartments by lysosomes. ATG10 is an E2-like enzyme involved in 2 ubiquitin-like modifications essential for autophagosome formation: ATG12 (MIM 609608)-ATG5 (MIM 604261) conjugation and modification of a soluble form of MAP-LC3 (MAP1LC3A; MIM 601242), a homolog of yeast Apg8, to a membrane-bound form.
Synonyms:	APG10; APG10L; pp12616



[View online »](#)

**Product images:**

Gel: 10%SDS-PAGE, Lysate: 50 ug, Lane: Mouse liver tissue, Primary antibody: (ATG10 Antibody) at dilution 1/500, Secondary antibody: Goat anti rabbit IgG at 1/8000 dilution, Exposure time: 40 seconds



The image on the left is immunohistochemistry of paraffin-embedded Human colon cancer tissue using (ATG10 Antibody) at dilution 1/60, on the right is treated with fusion protein. (Original magnification:  $\times 200$ )