

Product datasheet for **TA349479**

ANAPC13 Rabbit Polyclonal Antibody

Product data:

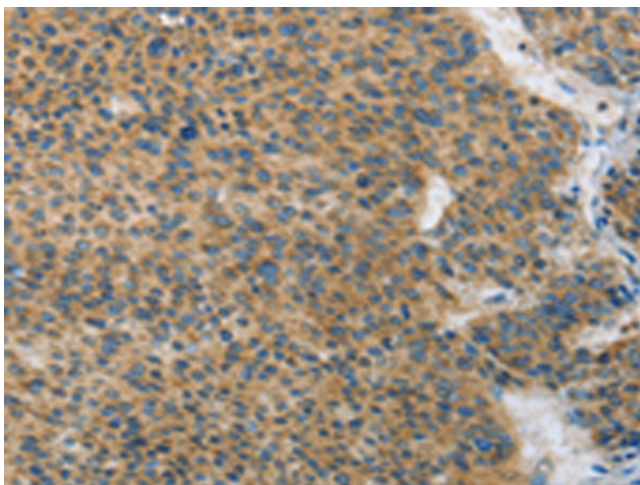
Product Type:	Primary Antibodies
Applications:	IHC
Recommended Dilution:	IHC: 25-100 Positive control: Human liver cancer Predicted cell location: Cytoplasm
Reactivity:	Human, Mouse
Host:	Rabbit
Isotype:	IgG
Clonality:	Polyclonal
Immunogen:	Fusion protein of human ANAPC13
Formulation:	pH7.4 PBS, 0.05% NaN3, 40% GlycerolIn
Concentration:	lot specific
Purification:	Antigen affinity purification
Conjugation:	Unconjugated
Storage:	Store at -20°C as received.
Stability:	Stable for 12 months from date of receipt.
Gene Name:	anaphase promoting complex subunit 13
Database Link:	NP_056206 Entrez Gene 69010 Mouse Entrez Gene 25847 Human Q9BS18
Background:	This gene encodes a component of the anaphase promoting complex, a large ubiquitin-protein ligase that controls cell cycle progression by regulating the degradation of cell cycle regulators such as B-type cyclins. The encoded protein is evolutionarily conserved and is required for the integrity and ubiquitin ligase activity of the anaphase promoting complex. Pseudogenes and splice variants have been found for this gene; however, the biological validity of some of the splice variants has not been determined.
Synonyms:	APC13; SWM1



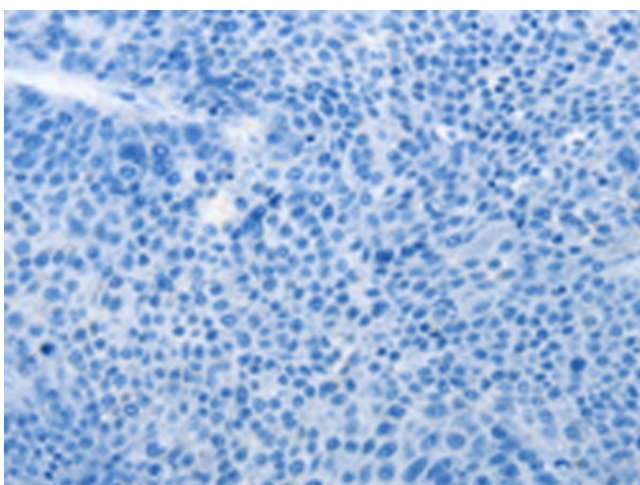
[View online »](#)

Protein Pathways: Cell cycle, Oocyte meiosis, Progesterone-mediated oocyte maturation, Ubiquitin mediated proteolysis

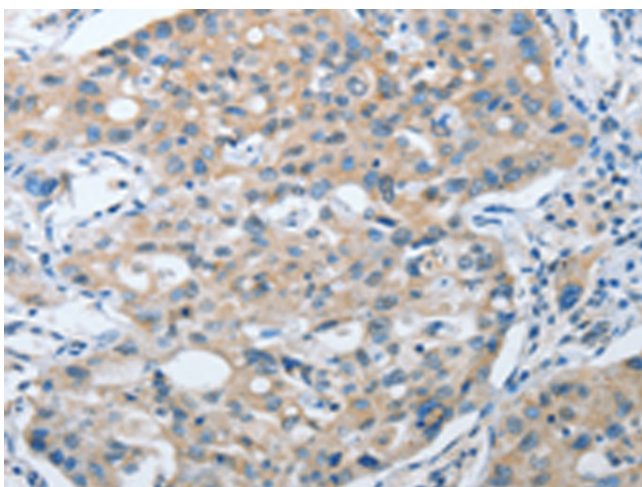
Product images:



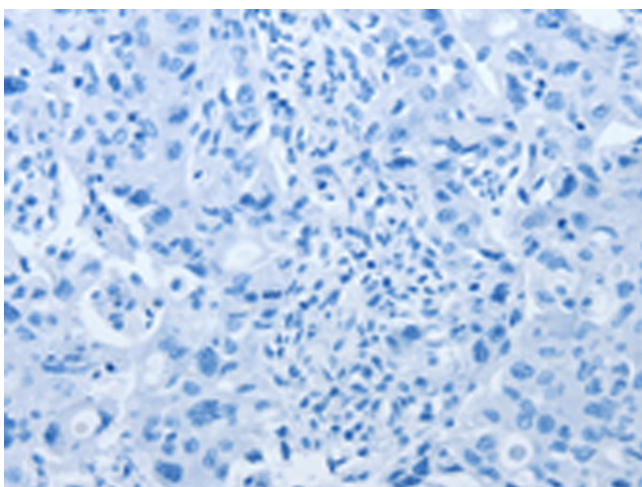
Immunohistochemistry of paraffin-embedded Human liver cancer tissue using TA349479 (ANAPC13 Antibody) at dilution 1/25 (Original magnification: $\times 200$)



Immunohistochemistry of paraffin-embedded Human liver cancer tissue using TA349479 (ANAPC13 Antibody) at dilution 1/25, treated with fusion protein. (Original magnification: $\times 200$)



Immunohistochemistry of paraffin-embedded Human lung cancer tissue using TA349479 (ANAPC13 Antibody) at dilution 1/25 (Original magnification: $\times 200$)



Immunohistochemistry of paraffin-embedded Human lung cancer tissue using TA349479 (ANAPC13 Antibody) at dilution 1/25, treated with fusion protein. (Original magnification: $\times 200$)