

## Product datasheet for **TA349478S**

### ANAPC13 Rabbit Polyclonal Antibody

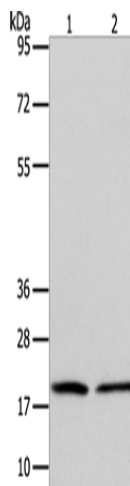
#### Product data:

Product Type:	Primary Antibodies
Applications:	WB
Recommended Dilution:	WB: 500-2000 WB positive control: Jurkat and RAW264.7 cells
Reactivity:	Human, Mouse
Host:	Rabbit
Isotype:	IgG
Clonality:	Polyclonal
Immunogen:	Fusion protein of human ANAPC13
Formulation:	pH7.4 PBS, 0.05% NaN <sub>3</sub> , 40% Glycerol
Purification:	Antigen affinity purification
Conjugation:	Unconjugated
Storage:	Store at -20°C as received.
Stability:	Stable for 12 months from date of receipt.
Predicted Protein Size:	8.5 kDa
Gene Name:	anaphase promoting complex subunit 13
Database Link:	<a href="#">NP_056206</a> <a href="#">Entrez Gene 69010 Mouse</a> <a href="#">Entrez Gene 25847 Human</a> <a href="#">Q9BS18</a>
Background:	This gene encodes a component of the anaphase promoting complex, a large ubiquitin-protein ligase that controls cell cycle progression by regulating the degradation of cell cycle regulators such as B-type cyclins. The encoded protein is evolutionarily conserved and is required for the integrity and ubiquitin ligase activity of the anaphase promoting complex. Pseudogenes and splice variants have been found for this gene; however, the biological validity of some of the splice variants has not been determined.
Synonyms:	APC13; SWM1
Protein Pathways:	Cell cycle, Oocyte meiosis, Progesterone-mediated oocyte maturation, Ubiquitin mediated proteolysis



[View online »](#)

## Product images:



Gel: 12+15%SDS-PAGE

Lysate: 40  $\mu$ g

Lane 1-2: Jurkat cells

RAW264.7 cells

Primary antibody: [TA349478] (ANAPC13  
Antibody) at dilution 1/600

Secondary antibody: Goat anti rabbit IgG at  
1/8000 dilution

Exposure time: 1 minute