

Product datasheet for **TA349474**

AP2M1 Rabbit Polyclonal Antibody

Product data:

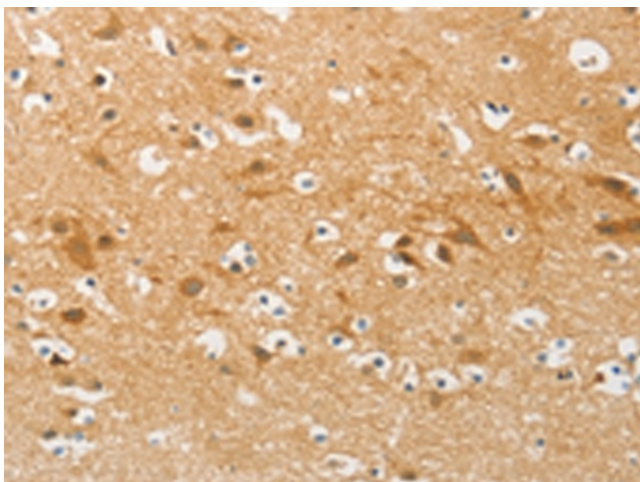
Product Type:	Primary Antibodies
Applications:	IHC
Recommended Dilution:	IHC: 25-100 Positive control: Human brain Predicted cell location: Cytoplasm or Nucleus
Reactivity:	Human, Mouse, Rat
Host:	Rabbit
Isotype:	IgG
Clonality:	Polyclonal
Immunogen:	Fusion protein of human AP2M1
Formulation:	pH7.4 PBS, 0.05% NaN ₃ , 40% Glycerol
Concentration:	lot specific
Purification:	Antigen affinity purification
Conjugation:	Unconjugated
Storage:	Store at -20°C as received.
Stability:	Stable for 12 months from date of receipt.
Gene Name:	adaptor related protein complex 2 mu 1 subunit
Database Link:	NP_004059 Entrez Gene 11773 Mouse Entrez Gene 116563 Rat Entrez Gene 1173 Human Q96CW1
Background:	This gene encodes a subunit of the heterotetrameric coat assembly protein complex 2 (AP2), which belongs to the adaptor complexes medium subunits family. The encoded protein is required for the activity of a vacuolar ATPase, which is responsible for proton pumping occurring in the acidification of endosomes and lysosomes. The encoded protein may also play an important role in regulating the intracellular trafficking and function of CTLA-4 protein. Two transcript variants encoding different isoforms have been found for this gene.
Synonyms:	AP50; CLAPM1; mu2
Protein Families:	Druggable Genome



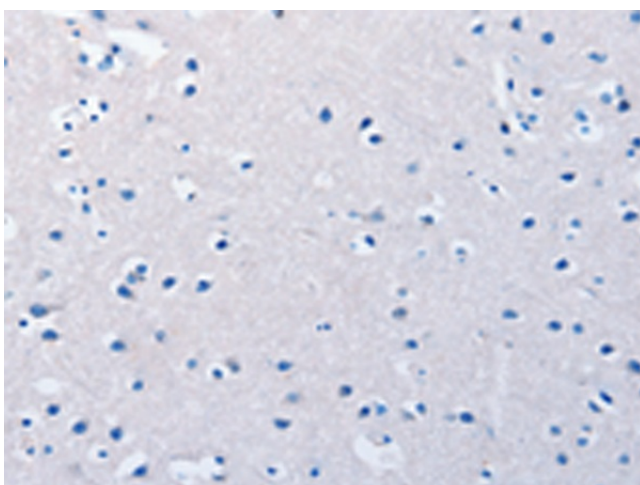
[View online »](#)

Protein Pathways: Endocytosis, Huntington's disease

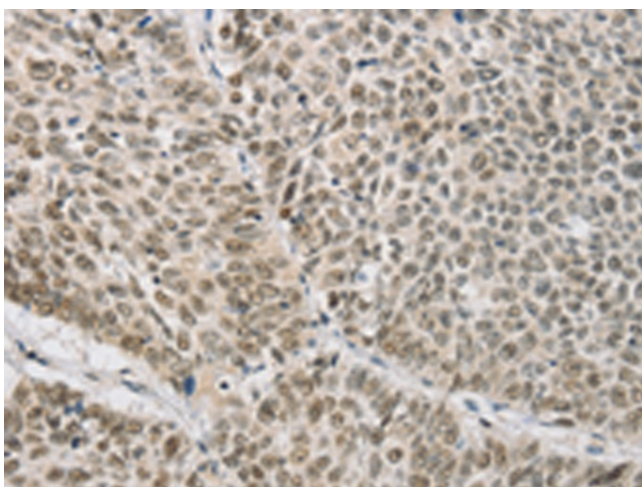
Product images:



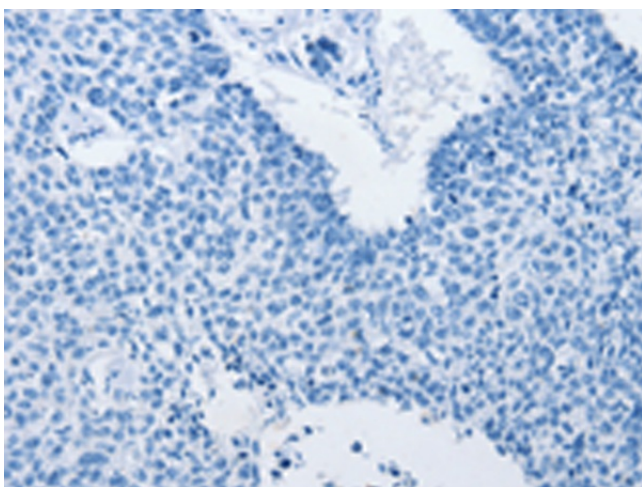
Immunohistochemistry of paraffin-embedded Human brain tissue using TA349474 (AP2M1 Antibody) at dilution 1/20 (Original magnification: ×200)



Immunohistochemistry of paraffin-embedded Human brain tissue using TA349474 (AP2M1 Antibody) at dilution 1/20, treated with fusion protein. (Original magnification: ×200)



Immunohistochemistry of paraffin-embedded Human lung cancer tissue using TA349474 (AP2M1 Antibody) at dilution 1/20 (Original magnification: $\times 200$)



Immunohistochemistry of paraffin-embedded Human lung cancer tissue using TA349474 (AP2M1 Antibody) at dilution 1/20, treated with fusion protein. (Original magnification: $\times 200$)