

## Product datasheet for **TA349471**

### ANKRD1 Rabbit Polyclonal Antibody

#### Product data:

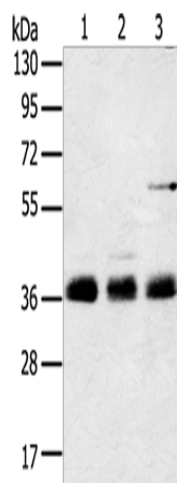
Product Type:	Primary Antibodies
Applications:	IHC, WB
Recommended Dilution:	WB: 500-2000 WB positive control: Mouse lung tissue, NIH/3T3 and hepg2 cells IHC: 25-100 Positive control: Human breast cancer Predicted cell location: Nucleus
Reactivity:	Human, Mouse, Rat
Host:	Rabbit
Isotype:	IgG
Clonality:	Polyclonal
Immunogen:	Fusion protein of human ANKRD1
Formulation:	pH7.4 PBS, 0.05% NaN <sub>3</sub> , 40% Glycerol
Concentration:	lot specific
Purification:	Antigen affinity purification
Conjugation:	Unconjugated
Storage:	Store at -20°C as received.
Stability:	Stable for 12 months from date of receipt.
Predicted Protein Size:	36 kDa
Gene Name:	ankyrin repeat domain 1
Database Link:	<a href="#">NP_055206</a> <a href="#">Entrez Gene 27064 Rat</a> <a href="#">Entrez Gene 107765 Mouse</a> <a href="#">Entrez Gene 27063 Human</a> <a href="#">Q15327</a>
Background:	The protein encoded by this gene is localized to the nucleus of endothelial cells and is induced by IL-1 and TNF-alpha stimulation. Studies in rat cardiomyocytes suggest that this gene functions as a transcription factor. Interactions between this protein and the sarcomeric proteins myopalladin and titin suggest that it may also be involved in the myofibrillar stretch-sensor system.



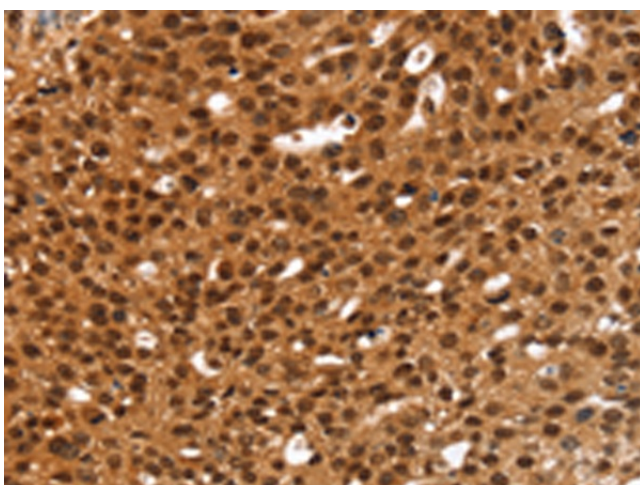
[View online »](#)

Synonyms: ALRP; bA320F15.2; C-193; CARP; CVARP; MCARP

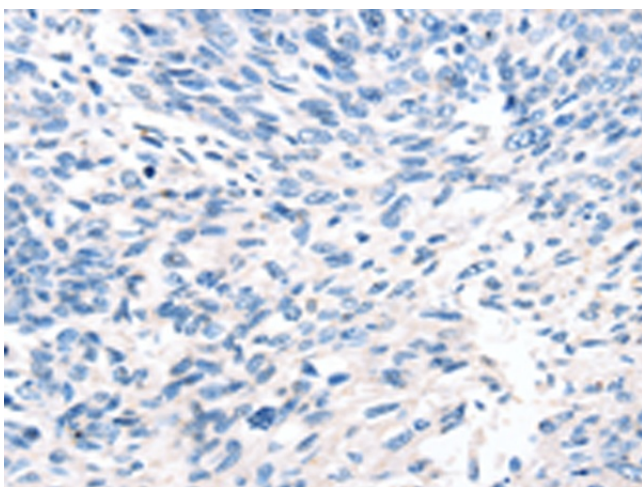
### Product images:



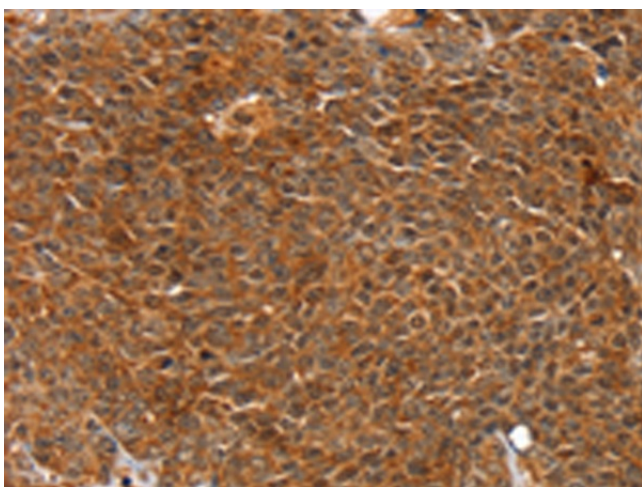
Gel: 8%SDS-PAGE  
Lysate: 60 µg  
Lane 1-3: Mouse lung tissue  
NIH/3T3 cells  
hepg2 cells  
Primary antibody: TA349471 (ANKRD1 Antibody)  
at dilution 1/400  
Secondary antibody: Goat anti rabbit IgG at  
1/8000 dilution  
Exposure time: 3 seconds



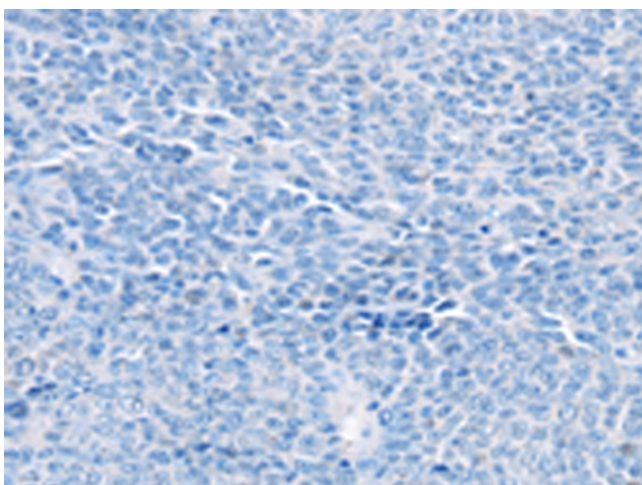
Immunohistochemistry of paraffin-embedded  
Human breast cancer tissue using TA349471  
(ANKRD1 Antibody) at dilution 1/20 (Original  
magnification: ×200)



Immunohistochemistry of paraffin-embedded Human breast cancer tissue using TA349471 (ANKRD1 Antibody) at dilution 1/20, treated with fusion protein. (Original magnification:  $\times 200$ )



Immunohistochemistry of paraffin-embedded Human ovarian cancer tissue using TA349471 (ANKRD1 Antibody) at dilution 1/20 (Original magnification:  $\times 200$ )



Immunohistochemistry of paraffin-embedded Human ovarian cancer tissue using TA349471 (ANKRD1 Antibody) at dilution 1/20, treated with fusion protein. (Original magnification:  $\times 200$ )