

Product datasheet for **TA349469**

Anillin (ANLN) Rabbit Polyclonal Antibody

Product data:

Product Type:	Primary Antibodies
Applications:	IHC
Recommended Dilution:	IHC: 25-100 Positive control: Human brain Predicted cell location: Nucleus
Reactivity:	Human, Mouse
Host:	Rabbit
Isotype:	IgG
Clonality:	Polyclonal
Immunogen:	Fusion protein of human ANLN
Formulation:	pH7.4 PBS, 0.05% NaN ₃ , 40% Glycerol
Concentration:	lot specific
Purification:	Antigen affinity purification
Conjugation:	Unconjugated
Storage:	Store at -20°C as received.
Stability:	Stable for 12 months from date of receipt.
Gene Name:	anillin actin binding protein
Database Link:	NP_061155 Entrez Gene 68743 Mouse Entrez Gene 54443 Human Q9NQW6

Background: Anillin, also known as scraps homolog, is an evolutionarily conserved Actin-binding protein required for cytokinesis that was first identified in *Drosophila melanogaster*. Anillin is a ubiquitously expressed protein with highest expression levels in the central nervous system. It is predominantly found in the nucleus and it localizes to the cleavage furrow during cytokinesis, forming a ring with the help of Rac GTPase. During cytokinesis, Anillin interacts with CD2AP and functions to concentrate Rho A and maintain the localization of active Myosin. In Anillin knockout cells the cleavage furrow fails to complete ingression. Anillin expression levels fluctuate with the cell cycle, peaking in mitosis.

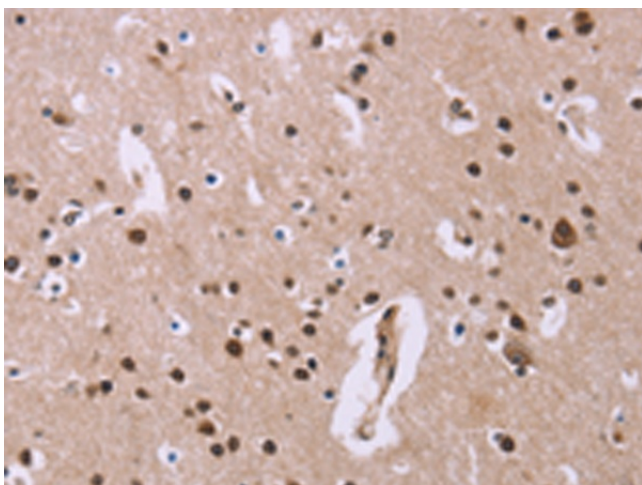


[View online »](#)

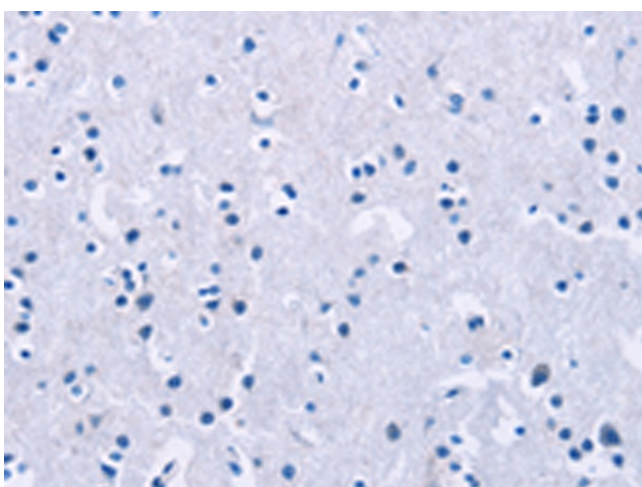
Synonyms: FSGS8; scra; Scraps

Protein Families: Druggable Genome

Product images:



Immunohistochemistry of paraffin-embedded Human brain tissue using TA349469 (ANLN Antibody) at dilution 1/20 (Original magnification: ×200)



Immunohistochemistry of paraffin-embedded Human brain tissue using TA349469 (ANLN Antibody) at dilution 1/20, treated with fusion protein. (Original magnification: ×200)