

Product datasheet for **TA349466**

Amphiregulin (AREG) Rabbit Polyclonal Antibody

Product data:

Product Type:	Primary Antibodies
Applications:	WB
Recommended Dilution:	ELISA: 2000-5000, WB: 500-2000
Reactivity:	Human
Host:	Rabbit
Isotype:	IgG
Clonality:	Polyclonal
Immunogen:	Fusion protein of human AREG
Formulation:	pH7.4 PBS, 0.05% NaN ₃ , 40% Glycerol
Concentration:	lot specific
Purification:	Antigen affinity purification
Conjugation:	Unconjugated
Storage:	Store at -20°C as received.
Stability:	Stable for 12 months from date of receipt.
Predicted Protein Size:	28 kDa
Gene Name:	amphiregulin
Database Link:	NP_001648 Entrez Gene 374 Human P15514

Background: The protein encoded by this gene is a member of the epidermal growth factor family. It is an autocrine growth factor as well as a mitogen for astrocytes, Schwann cells, and fibroblasts. It is related to epidermal growth factor (EGF) and transforming growth factor alpha (TGF-alpha). This protein interacts with the EGF/TGF-alpha receptor to promote the growth of normal epithelial cells and inhibits the growth of certain aggressive carcinoma cell lines. This encoded protein is associated with a psoriasis-like skin phenotype

Synonyms: AR; AREGB; CRDGF; SDGF

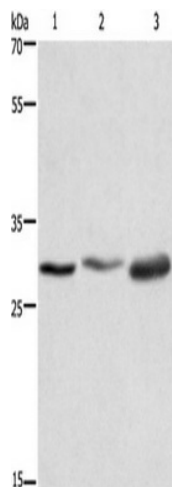
Protein Families: Druggable Genome, Transmembrane



[View online »](#)

Protein Pathways: ErbB signaling pathway

Product images:



Gel: 8%SDS-PAGE, Lysate: 40 ug, Lane 1-3: HepG2 cells, Hela cells, 231 cells, Primary antibody: (AREG Antibody) at dilution 1/500, Secondary antibody: Goat anti rabbit IgG at 1/8000 dilution, Exposure time: 15 seconds