

## Product datasheet for **TA349463**

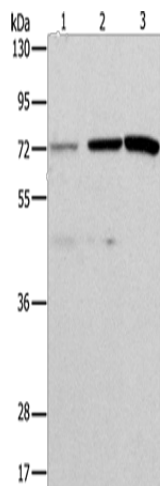
### C2CD6 Rabbit Polyclonal Antibody

#### Product data:

Product Type:	Primary Antibodies
Applications:	WB
Recommended Dilution:	WB: 200-1000 WB positive control: Hela and SKOV3 cells, mouse liver tissue
Reactivity:	Human, Mouse
Host:	Rabbit
Isotype:	IgG
Clonality:	Polyclonal
Immunogen:	Fusion protein of human ALS2CR11
Formulation:	pH7.4 PBS, 0.05% NaN <sub>3</sub> , 40% Glycerol
Concentration:	lot specific
Purification:	Antigen affinity purification
Conjugation:	Unconjugated
Storage:	Store at -20°C as received.
Stability:	Stable for 12 months from date of receipt.
Predicted Protein Size:	71 kDa
Gene Name:	amyotrophic lateral sclerosis 2 chromosome region candidate 11
Database Link:	<a href="#">NP_689738</a> <a href="#">Entrez Gene 73463 Mouse</a> <a href="#">Entrez Gene 151254 Human</a> <a href="#">Q53TS8</a>
Background:	This gene has highly expression in digestive system component and liver, biliary system. It may have four isoforms that produced by alternative splicing. Transcription profiling of human mesenchymal stem cells transformed with lentiviral vectors of TERT, E6, SV40 and RAS.
Synonyms:	DKFZp686H0636; FLJ25351; FLJ40332



[View online »](#)

**Product images:**

Gel: 10%SDS-PAGE

Lysate: 40  $\mu$ g

Lane 1-3: HeLa cells

SKOV3 cells

mouse liver tissue

Primary antibody: TA349463 (C2CD6 Antibody) at dilution 1/500

Secondary antibody: Goat anti rabbit IgG at 1/8000 dilution

Exposure time: 5 minutes