

## Product datasheet for **TA349462**

### ALS2CR8 (CARF) Rabbit Polyclonal Antibody

#### Product data:

Product Type:	Primary Antibodies
Applications:	WB
Recommended Dilution:	WB: 200-1000 WB positive control: Human testis tissue and K562 cells
Reactivity:	Human
Host:	Rabbit
Isotype:	IgG
Clonality:	Polyclonal
Immunogen:	Fusion protein of human CARF
Formulation:	pH7.4 PBS, 0.05% NaN <sub>3</sub> , 40% Glycerol
Concentration:	lot specific
Purification:	Antigen affinity purification
Conjugation:	Unconjugated
Storage:	Store at -20°C as received.
Stability:	Stable for 12 months from date of receipt.
Predicted Protein Size:	81 kDa
Gene Name:	calcium responsive transcription factor
Database Link:	<a href="#">NP_001098056</a> <a href="#">Entrez Gene 79800 Human</a> <a href="#">Q8N187</a>



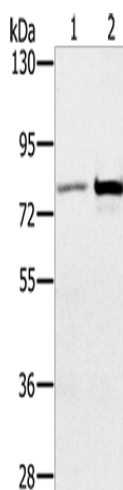
[View online »](#)

**Background:**

CARF (calcium-response factor), also known as ALS2CR8 (amyotrophic lateral sclerosis 2 chromosomal region candidate gene 8 protein) or NYD-SP24, is a 725 amino acid nuclear protein. Expressed in a wide variety of tissues with highest expression in the hippocampus, CARF is thought to be a transcription factor that associates with the p53 tumor suppression pathway. CARF cooperates, co-localizes and is co-regulated with ARF, an ADP-ribosylation factor, and, through this interaction, helps to mediate ARF-p53-induced apoptotic signaling. This apoptotic pathway is implicated in cell cycle control, proper cellular development, response to DNA damage and the aging process, suggesting that CARF participates in various events throughout the cell.

**Synonyms:**

ALS2CR8; NYD-SP24

**Product images:**

Gel: 6%SDS-PAGE  
Lysate: 40 µg  
Lane 1-2: Human testis tissue  
K562 cells  
Primary antibody: TA349462 (CARF Antibody) at dilution 1/300  
Secondary antibody: Goat anti rabbit IgG at 1/8000 dilution  
Exposure time: 2 minutes