

## Product datasheet for **TA349451S**

### ADAMTSL2 Rabbit Polyclonal Antibody

#### Product data:

Product Type:	Primary Antibodies
Applications:	IHC, WB
Recommended Dilution:	WB: 500-2000 WB positive control: A549 cell lysate IHC: 50-200 Positive control: Human esophagus cancer Predicted cell location: Secreted
Reactivity:	Human, Mouse
Host:	Rabbit
Isotype:	IgG
Clonality:	Polyclonal
Immunogen:	Fusion protein of human ADAMTSL2
Formulation:	pH7.4 PBS, 0.05% NaN <sub>3</sub> , 40% Glycerol
Purification:	Antigen affinity purification
Conjugation:	Unconjugated
Storage:	Store at -20°C as received.
Stability:	Stable for 12 months from date of receipt.
Predicted Protein Size:	105 kDa
Gene Name:	ADAMTS like 2
Database Link:	<a href="#">NP_055509</a> <a href="#">Entrez Gene 77794 Mouse</a> <a href="#">Entrez Gene 9719 Human</a> <a href="#">Q86TH1</a>



[View online »](#)

**Background:**

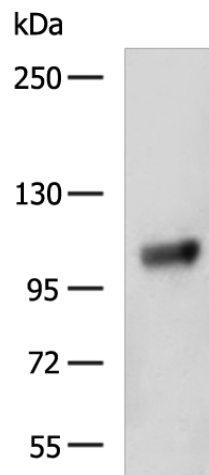
This gene encodes a member of the ADAMTS (a disintegrin and metalloproteinase with thrombospondin motifs) and ADAMTS-like protein family. Members of the family share several distinct protein modules, including a propeptide region, a metalloproteinase domain, a disintegrin-like domain, and a thrombospondin type 1 (TS) motif. Individual members of this family differ in the number of C-terminal TS motifs, and some have unique C-terminal domains. The protein encoded by this gene lacks the protease domain, and is therefore of a member of the the ADAMTS-like protein subfamily. It is a secreted glycoprotein that binds the cell surface and extracellular matrix; it also interacts with latent transforming growth factor beta binding protein 1. Mutations in this gene have been associated with geleophysic dysplasia.

**Synonyms:**

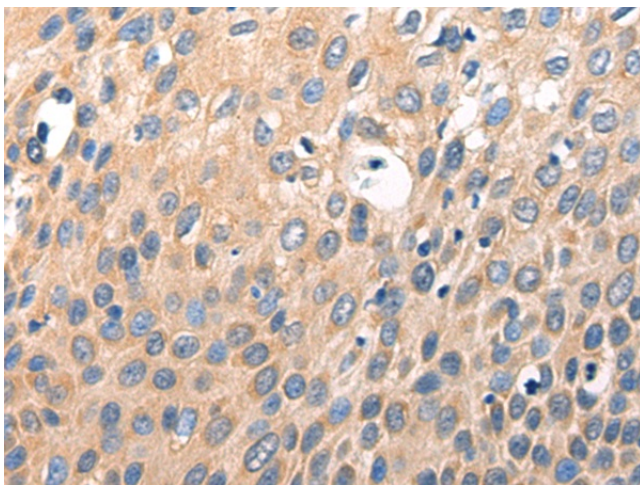
GPHYSD1

**Protein Families:**

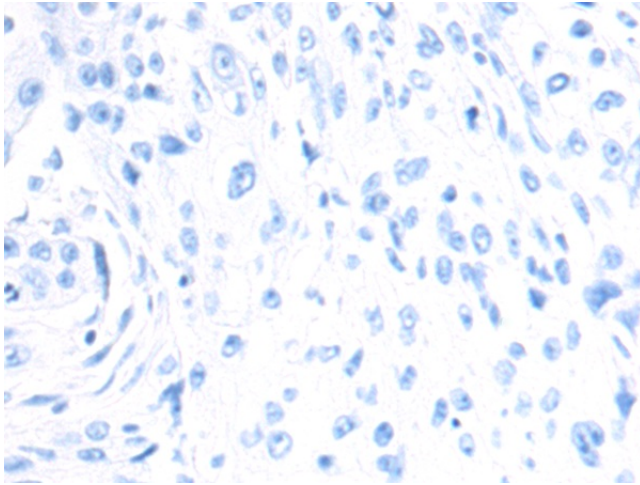
Secreted Protein

**Product images:**

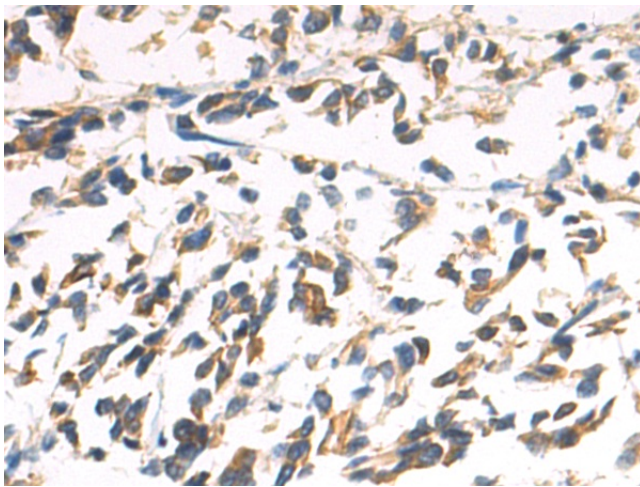
Gel: 6%SDS-PAGE  
Lysate: 40 µg  
Lane: A549 cell lysate  
Primary antibody: [TA349451] (ADAMTSL2 Antibody) at dilution 1/800  
Secondary antibody: Goat anti rabbit IgG at 1/5000 dilution  
Exposure time: 3 seconds



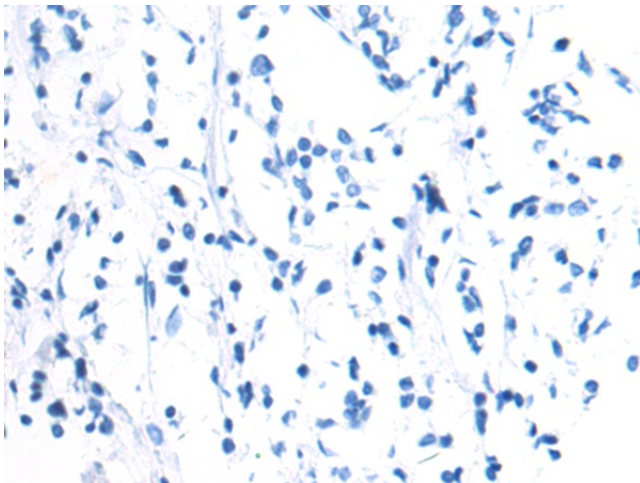
Immunohistochemistry of paraffin-embedded Human esophagus cancer tissue using [TA349451] (ADAMTSL2 Antibody) at dilution 1/70 (Original magnification: x200)



Immunohistochemistry of paraffin-embedded Human esophagus cancer tissue using [TA349451] (ADAMTSL2 Antibody) at dilution 1/70, treated with fusion protein. (Original magnification: ×200)



Immunohistochemistry of paraffin-embedded Human breast cancer tissue using [TA349451] (ADAMTSL2 Antibody) at dilution 1/70 (Original magnification: ×200)



Immunohistochemistry of paraffin-embedded Human breast cancer tissue using [TA349451] (ADAMTSL2 Antibody) at dilution 1/70, treated with fusion protein. (Original magnification: ×200)