

## Product datasheet for **TA349451**

### ADAMTSL2 Rabbit Polyclonal Antibody

#### Product data:

|                         |   |
|-------------------------|---|
| Product Type:           | Primary Antibodies  |
| Applications:           | IHC, WB   |
| Recommended Dilution:   | WB: 500-2000<br>WB positive control: A549 cell lysate<br>IHC: 50-200<br>Positive control: Human esophagus cancer<br>Predicted cell location: Secreted |
| Reactivity:             | Human, Mouse  |
| Host:                   | Rabbit  |
| Isotype:                | IgG   |
| Clonality:              | Polyclonal  |
| Immunogen:              | Fusion protein of human ADAMTSL2  |
| Formulation:            | pH7.4 PBS, 0.05% NaN <sub>3</sub> , 40% Glycerol  |
| Concentration:          | lot specific  |
| Purification:           | Antigen affinity purification   |
| Conjugation:            | Unconjugated  |
| Storage:                | Store at -20°C as received.   |
| Stability:              | Stable for 12 months from date of receipt.  |
| Predicted Protein Size: | 105 kDa   |
| Gene Name:              | ADAMTS like 2   |
| Database Link:          | <a href="#">NP_055509</a><br><a href="#">Entrez Gene 77794 Mouse</a> <a href="#">Entrez Gene 9719 Human</a><br><a href="#">Q86TH1</a>                 |



[View online »](#)

**Background:**

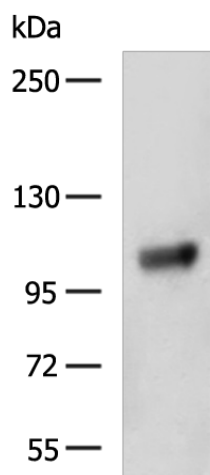
This gene encodes a member of the ADAMTS (a disintegrin and metalloproteinase with thrombospondin motifs) and ADAMTS-like protein family. Members of the family share several distinct protein modules, including a propeptide region, a metalloproteinase domain, a disintegrin-like domain, and a thrombospondin type 1 (TS) motif. Individual members of this family differ in the number of C-terminal TS motifs, and some have unique C-terminal domains. The protein encoded by this gene lacks the protease domain, and is therefore of a member of the the ADAMTS-like protein subfamily. It is a secreted glycoprotein that binds the cell surface and extracellular matrix; it also interacts with latent transforming growth factor beta binding protein 1. Mutations in this gene have been associated with geleophysic dysplasia.

**Synonyms:**

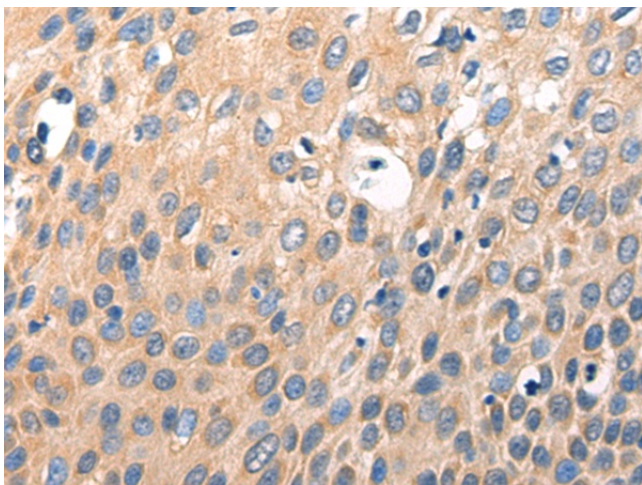
GPHYSD1

**Protein Families:**

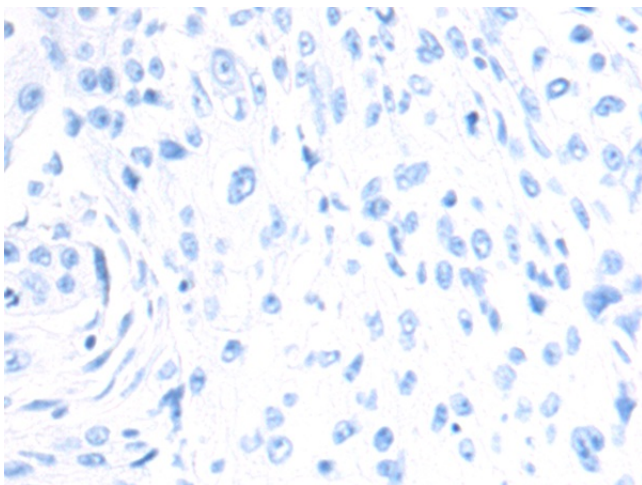
Secreted Protein

**Product images:**

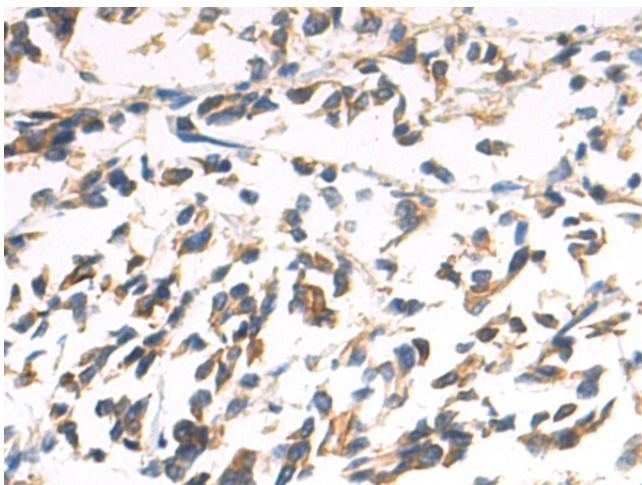
Gel: 6%SDS-PAGE  
Lysate: 40 µg  
Lane: A549 cell lysate  
Primary antibody: TA349451 (ADAMTSL2 Antibody) at dilution 1/800  
Secondary antibody: Goat anti rabbit IgG at 1/5000 dilution  
Exposure time: 3 seconds



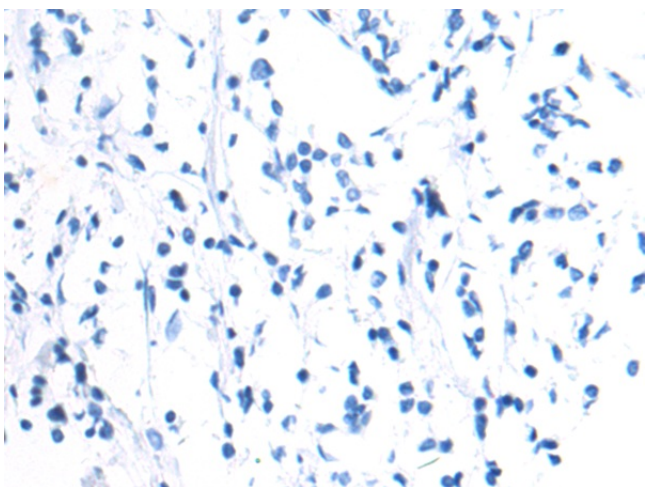
Immunohistochemistry of paraffin-embedded Human esophagus cancer tissue using TA349451 (ADAMTSL2 Antibody) at dilution 1/70 (Original magnification:  $\times 200$ )



Immunohistochemistry of paraffin-embedded Human esophagus cancer tissue using TA349451 (ADAMTSL2 Antibody) at dilution 1/70, treated with fusion protein. (Original magnification:  $\times 200$ )



Immunohistochemistry of paraffin-embedded Human breast cancer tissue using TA349451 (ADAMTSL2 Antibody) at dilution 1/70 (Original magnification:  $\times 200$ )



Immunohistochemistry of paraffin-embedded Human breast cancer tissue using TA349451 (ADAMTSL2 Antibody) at dilution 1/70, treated with fusion protein. (Original magnification: ×200)