

Product datasheet for TA349446S

Tau (MAPT) Rabbit Polyclonal Antibody

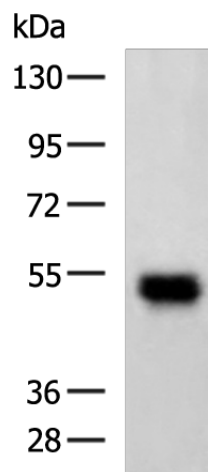
Product data:

Product Type:	Primary Antibodies
Applications:	WB
Recommended Dilution:	WB: 1000-5000 WB positive control: Mouse fetal brain tissue lysate
Reactivity:	Human, Mouse, Rat
Host:	Rabbit
Isotype:	IgG
Clonality:	Polyclonal
Immunogen:	Fusion protein of human MAPT
Formulation:	pH7.4 PBS, 0.05% NaN ₃ , 40% Glycerol
Purification:	Antigen affinity purification
Conjugation:	Unconjugated
Storage:	Store at -20°C as received.
Stability:	Stable for 12 months from date of receipt.
Predicted Protein Size:	79 kDa
Gene Name:	microtubule associated protein tau
Database Link:	NP_005901 Entrez Gene 17762 Mouse Entrez Gene 29477 Rat Entrez Gene 4137 Human P10636
Background:	This gene encodes the microtubule-associated protein tau (MAPT) whose transcript undergoes complex, regulated alternative splicing, giving rise to several mRNA species. MAPT transcripts are differentially expressed in the nervous system, depending on stage of neuronal maturation and neuron type. MAPT gene mutations have been associated with several neurodegenerative disorders such as Alzheimer's disease, Pick's disease, frontotemporal dementia, cortico-basal degeneration and progressive supranuclear palsy.
Synonyms:	DDPAC; FTDP-17; MAPTL; MSTD; MTBT1; MTBT2; PPND; PPP1R103; TAU
Protein Families:	Druggable Genome


[View online »](#)

Protein Pathways: Alzheimer's disease, MAPK signaling pathway

Product images:



Gel: 8%SDS-PAGE
 Lysate: 60 µg
 Lane 1-2: A172 cells
 hela cells
 Primary antibody: [TA349446] (MAPT Antibody) at dilution 1/150
 Secondary antibody: Goat anti rabbit IgG at 1/8000 dilution
 Exposure time: 40 seconds