

Product datasheet for **TA349444**

SYT17 Rabbit Polyclonal Antibody

Product data:

Product Type:	Primary Antibodies
Applications:	IHC, WB
Recommended Dilution:	WB: 200-1000 WB positive control: Mouse kidney tissue IHC: 50-200 Positive control: Human cervical cancer Predicted cell location: Cytoplasm
Reactivity:	Human, Mouse, Rat
Host:	Rabbit
Isotype:	IgG
Clonality:	Polyclonal
Immunogen:	Fusion protein of human SYT17
Formulation:	pH7.4 PBS, 0.05% NaN ₃ , 40% Glycerol
Concentration:	lot specific
Purification:	Antigen affinity purification
Conjugation:	Unconjugated
Storage:	Store at -20°C as received.
Stability:	Stable for 12 months from date of receipt.
Predicted Protein Size:	54 kDa
Gene Name:	synaptotagmin 17
Database Link:	NP_057608 Entrez Gene 110058 Mouse Entrez Gene 192189 Rat Entrez Gene 51760 Human Q9BSW7



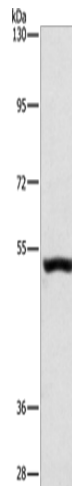
[View online »](#)

Background:

Synaptotagmin XVII (SytXVII), also known as Synaptotagmin-17 (SYT17) or Protein B/K, is a 474 amino acid peripheral membrane protein that belongs to the Synaptotagmin family and contains two C2 domains. While expressed abundantly in brain (frontal and temporal lobes, hippocampus, hypothalamus, amygdala, substantia nigra and pituitary), kidney and prostate, Synaptotagmin XVII is also expressed in fetal brain, kidney and lung. The gene that encodes Synaptotagmin XVII contains 100,082 bases and maps to human chromosome 16p12.3. Encoding over 900 genes and consisting of approximately 90 million base pairs, chromosome 16 makes up nearly 3% of the human genome and is associated with a variety of genetic disorders, such as giant axonal neuropathy, Rubinstein-Taybi syndrome and Crohn's disease. An association with systemic lupus erythematosus and a number of other autoimmune disorders with the pericentromeric region of chromosome 16 has led to the identification of SLC5A11 as a potential autoimmune modifier.

Synonyms:

sytXVII

Product images:

Gel: 6%SDS-PAGE

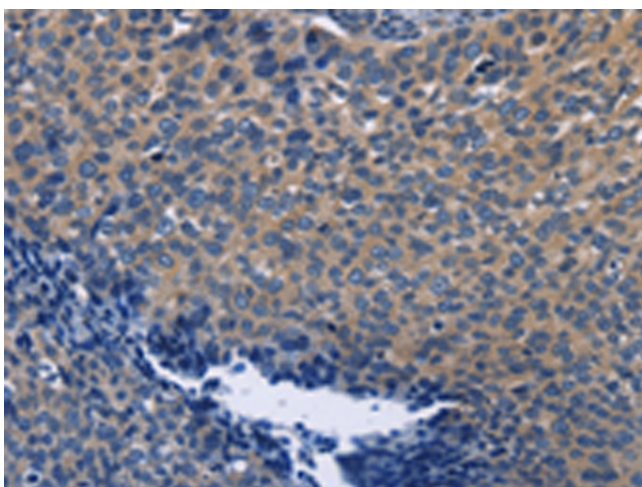
Lysate: 40 µg

Lane: Mouse kidney tissue

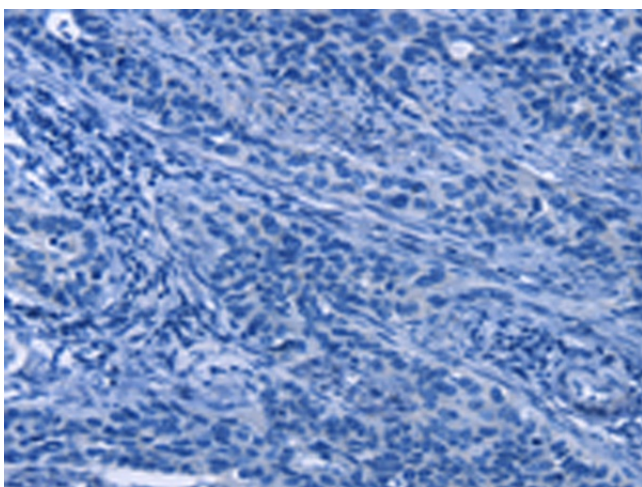
Primary antibody: TA349444 (SYT17 Antibody) at dilution 1/650

Secondary antibody: Goat anti rabbit IgG at 1/8000 dilution

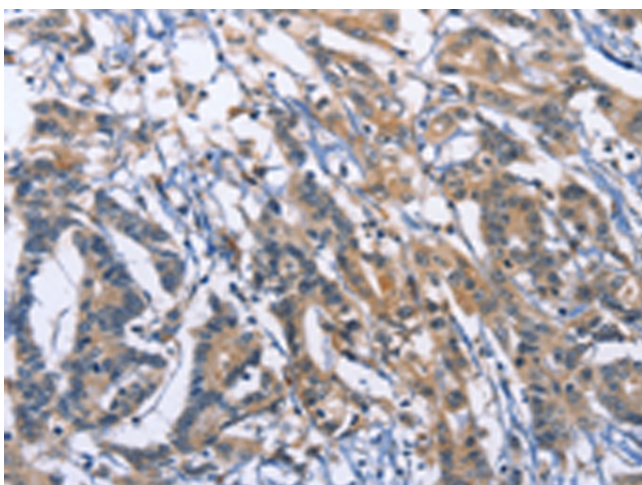
Exposure time: 1 minute



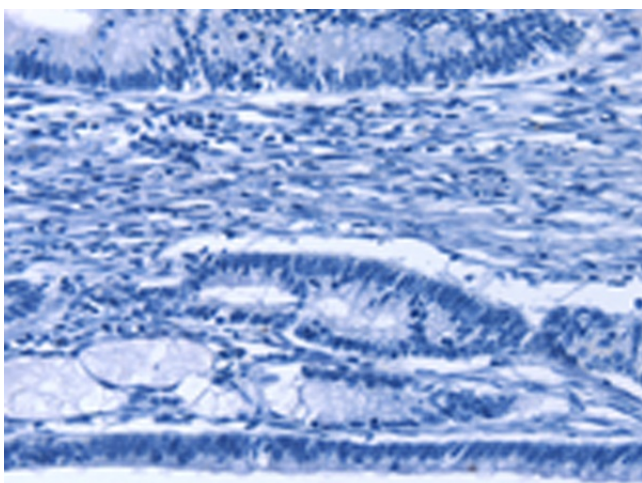
Immunohistochemistry of paraffin-embedded Human cervical cancer tissue using TA349444 (SYT17 Antibody) at dilution 1/60 (Original magnification: $\times 200$)



Immunohistochemistry of paraffin-embedded Human cervical cancer tissue using TA349444 (SYT17 Antibody) at dilution 1/60, treated with fusion protein. (Original magnification: $\times 200$)



Immunohistochemistry of paraffin-embedded Human colon cancer tissue using TA349444 (SYT17 Antibody) at dilution 1/60 (Original magnification: $\times 200$)



Immunohistochemistry of paraffin-embedded Human colon cancer tissue using TA349444 (SYT17 Antibody) at dilution 1/60, treated with fusion protein. (Original magnification: $\times 200$)