

## Product datasheet for **TA349441**

### SPARC Rabbit Polyclonal Antibody

#### Product data:

Product Type:	Primary Antibodies
Applications:	IHC, WB
Recommended Dilution:	WB: 500-2000 WB positive control: A375 cells IHC: 25-100 Positive control: Human liver cancer Predicted cell location: Cytoplasm
Reactivity:	Human, Mouse, Rat
Host:	Rabbit
Isotype:	IgG
Clonality:	Polyclonal
Immunogen:	Fusion protein of human SPARC
Formulation:	pH7.4 PBS, 0.05% NaN <sub>3</sub> , 40% Glycerol
Concentration:	lot specific
Purification:	Antigen affinity purification
Conjugation:	Unconjugated
Storage:	Store at -20°C as received.
Stability:	Stable for 12 months from date of receipt.
Predicted Protein Size:	35 kDa
Gene Name:	secreted protein acidic and cysteine rich
Database Link:	<a href="#">NP_003109</a> <a href="#">Entrez Gene 20692 Mouse</a> <a href="#">Entrez Gene 24791 Rat</a> <a href="#">Entrez Gene 6678 Human</a> <a href="#">P09486</a>

**Background:** This gene encodes a cysteine-rich acidic matrix-associated protein. The encoded protein is required for the collagen in bone to become calcified but is also involved in extracellular matrix synthesis and promotion of changes to cell shape. The gene product has been associated with tumor suppression but has also been correlated with metastasis based on changes to cell shape which can promote tumor cell invasion.

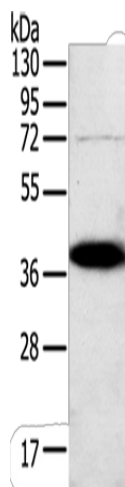


[View online »](#)

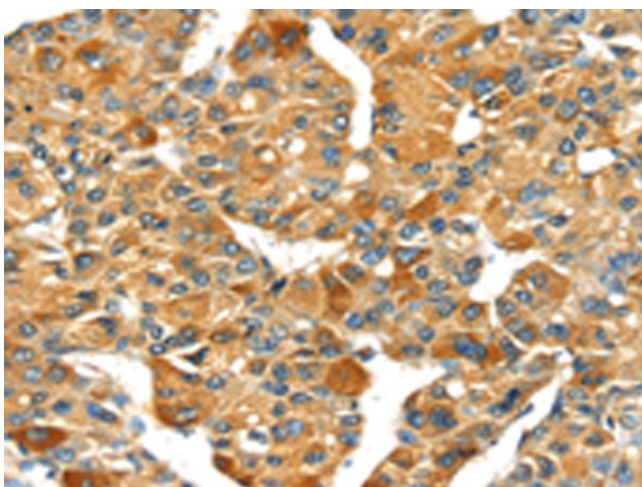
Synonyms: BM-40; OI17; ON

Protein Families: Druggable Genome

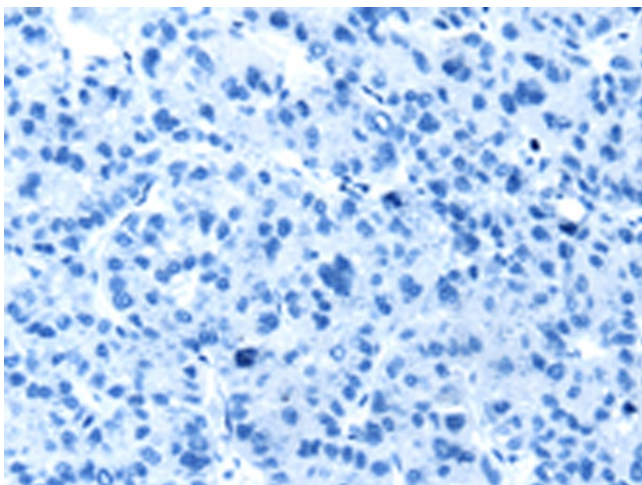
### Product images:



Gel: 8%SDS-PAGE  
Lysate: 40  $\mu$ g  
Lane: A375 cells  
Primary antibody: TA349441 (SPARC Antibody) at dilution 1/500  
Secondary antibody: Goat anti rabbit IgG at 1/8000 dilution  
Exposure time: 5 seconds



Immunohistochemistry of paraffin-embedded Human liver cancer tissue using TA349441 (SPARC Antibody) at dilution 1/35 (Original magnification:  $\times$ 200)



Immunohistochemistry of paraffin-embedded Human liver cancer tissue using TA349441 (SPARC Antibody) at dilution 1/35, treated with fusion protein. (Original magnification: x200)