

## Product datasheet for **TA349440**

### SOCS2 Rabbit Polyclonal Antibody

#### Product data:

Product Type:	Primary Antibodies
Applications:	IHC
Recommended Dilution:	IHC: 25-100 Positive control: Human brain Predicted cell location: Cytoplasm
Reactivity:	Human, Mouse, Rat
Host:	Rabbit
Isotype:	IgG
Clonality:	Polyclonal
Immunogen:	Fusion protein of human SOCS2
Formulation:	pH7.4 PBS, 0.05% NaN <sub>3</sub> , 40% GlycerolIn
Concentration:	lot specific
Purification:	Antigen affinity purification
Conjugation:	Unconjugated
Storage:	Store at -20°C as received.
Stability:	Stable for 12 months from date of receipt.
Gene Name:	suppressor of cytokine signaling 2
Database Link:	<a href="#">NP_003868</a> <a href="#">Entrez Gene 84607 Rat</a> <a href="#">Entrez Gene 216233 Mouse</a> <a href="#">Entrez Gene 8835 Human</a> <a href="#">O14508</a>

**Background:** This gene encodes a member of the suppressor of cytokine signaling (SOCS) family. SOCS family members are cytokine-inducible negative regulators of cytokine receptor signaling via the Janus kinase/signal transducer and activation of transcription pathway (the JAK/STAT pathway). SOCS family proteins interact with major molecules of signaling complexes to block further signal transduction, in part, by proteasomal depletion of receptors or signal-transducing proteins via ubiquitination. The expression of this gene can be induced by a subset of cytokines, including erythropoietin, GM-CSF, IL10, interferon (IFN)-gamma and by cytokine receptors such as growth hormone receptor.



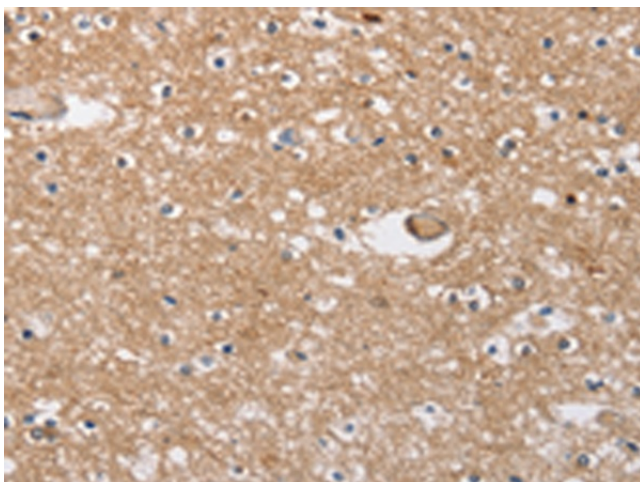
[View online »](#)

**Synonyms:** CIS2; Cish2; SOCS-2; SSI-2; SSI2; STAT12

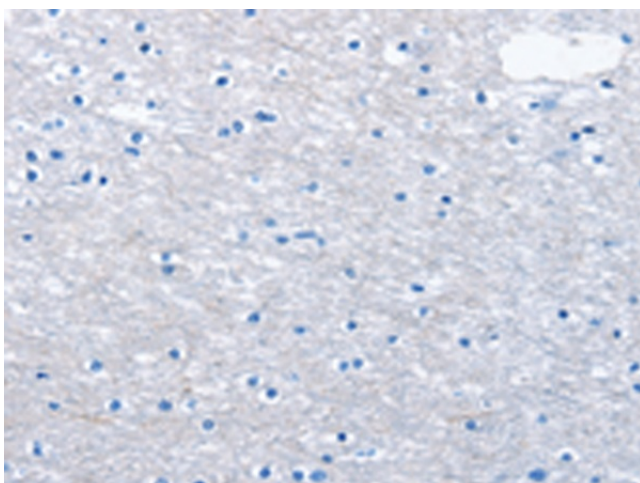
**Protein Families:** Druggable Genome

**Protein Pathways:** Insulin signaling pathway, Jak-STAT signaling pathway, Type II diabetes mellitus

**Product images:**



Immunohistochemistry of paraffin-embedded Human brain tissue using TA349440 (SOCS2 Antibody) at dilution 1/40 (Original magnification: ×200)



Immunohistochemistry of paraffin-embedded Human brain tissue using TA349440 (SOCS2 Antibody) at dilution 1/40, treated with fusion protein. (Original magnification: ×200)